



215 ■ Katie von der Ohe
Ripple 1973/74 bronze sculpture
\$12,000/15,000 9.5x16.5x19 in./24x41x48 cm.

FINE ART AUCTION

Sunday, November 4, 2018 at 1:00 PM

Roderick Mah Centre for Continuous Learning Mount Royal University

4825 Mount Royal Gate SW
Calgary, Alberta

PREVIEW

Roderick Mah Centre for Continuous Learning Mount Royal University

4825 Mount Royal Gate SW

Friday, November 2nd from 5:00 PM to 8:00 PM

Saturday, November 3rd from 10:00 AM to 5:00 PM

Sunday, November 4th from 10:00 AM to 1:00 PM

Auction starts Sunday, November 4th at 1:00 PM

CANADIAN ART LOTS.....	001 - 119
CONTEMPORARY ART LOTS	201 - 232
INTERNATIONAL ART LOTS	301 - 312
4th Session LOTS.....	401 - 536

Buyers premium 17%

Some or all lots are subject to a reserve

For more information, please contact:
Doug Levis or Cheryl Sonley

Our office and art storage location:

1739 10 Avenue SW

Calgary AB T3C 0K1

Tel: 403-541-9099

Fax: 403-541-9097

E-mail: mail@levisauctions.com

Web: www.levisauctions.com

and www.levisonlineauctions.com

Visit our website for complete details on every lot including additional items to this sale.

www.levisauctions.com

Works from the estate of Dr. Margaret [Marmie] Perkins Hess O.C., A.O.E., LL.D. [Hon], B.A., D.F.E. [Hon], F.R.C.G.S., U.E.



Henry George Glyde, *Portrait of a Woman*
From the University of Lethbridge Art collection
gift of Dr. Margaret Hess, 2017

We are honoured to be offering select works from the Estate of Dr. Margaret [Marmie] Perkins Hess in this auction. In conjunction with a dedicated Online Auction of Marmie's pieces that closed September 29th, this Live Auction includes 21 pieces from her collection. These lots can be found throughout the auction and are denoted in the provenance on our website.

Dr. Margaret Hess has been described as the "quintessential Western Canadian" and throughout her lifetime was incredibly influential to the Alberta arts community. She was a philanthropist, internationally recognized art historian and lecturer, businesswoman, rancher and community leader. After teaching at the Provincial Institute of Technology [now SAIT and ACAD] and the Banff School of Fine arts, she devoted years to studying and protecting Indigenous culture. Dr. Hess opened Calgary Galleries Ltd. in 1970 and was one of the first in Canada to offer the First Nations and Inuit artwork for which she was so passionate.

Earlier this year, the University of Lethbridge announced an unparalleled bequest by her Estate of over 1000 works. With a value at over \$4.5 million, the collection is a record-breaking donation and the University has renamed their art gallery to the Dr. Margaret [Marmie] Perkins Hess Gallery in her honour. Due to this wonderfully generous gift, Dr. Hess will continue to have a lasting impression on the arts community she loved so much.

Thank you to the University of Lethbridge and the Alberta Order of Excellence for the biographical information.

Addendum for Fine Art Auction - Sunday, November 4, 2018



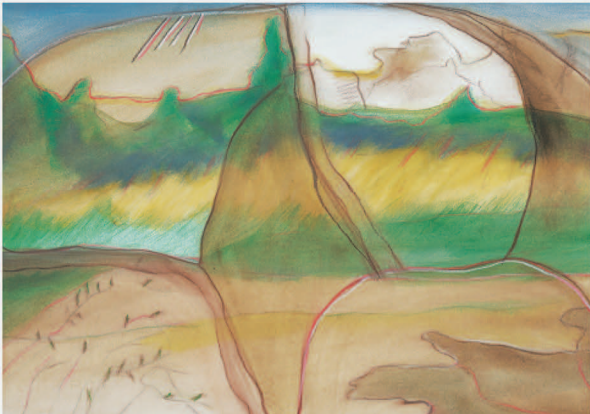
LOT # 015.1

Artist: **WILLIAM BRYMNER** ~ [1855-1925] Canadian
Title: *Untitled - Along the Water*
Media: watercolour on paper
Size: 7.5 x 10 in. / 19 x 25 cm.
Notes: signed lower right; framed; some yellowing noted
Provenance: John Magee Limited, Belfast and
Region Fine Art, Manitoba, labels verso
ESTIMATE: \$900/1,200



LOT # 025.1

Artist: **KEN CHRISTOPHER** ~ [b.1942] Canadian
Title: *Down Stream to Bow Falls*
Media: oil on canvas
Size: 39.25 x 49.25 in. / 100 x 125 cm. Dated: 2002
Notes: signed and dated lower right; titled verso; un-
framed
Provenance: private collection, Calgary
ESTIMATE: \$1,500/2,000



LOT # 021.1

Artist: **JOANE CARDINAL-SCHUBERT** ~ [1942-2009]
Title: *Untitled - Story of the Plains*
Media: pastel and watercolour on paper
Size: 14 x 20.25 in. / 36 x 51 cm.
Notes: unsigned; framed with archival mat
Provenance: private collection, Calgary
ESTIMATE: \$800/1,000



LOT # 037.1

Artist: **ORESTES [RICK] DE GRANDMAISON** ~
[1932-1985] Canadian
Title: *Crimson Skies*
Media: oil on canvas board
Size: 21.75 x 30 in. / 55 x 76 cm.
Notes: signed lower right; signed and titled verso; framed
Provenance: private collection, Calgary
ESTIMATE: \$1,500/2,000

Addendum for Fine Art Auction - Sunday, November 4, 2018



LOT # 060.1

Artist: **RANDOLPH STANLEY HEWTON** ~ [1888-1960]
Title: *Untitled - Nude on Colourful Throws*
Media: oil on canvas
Size: 26.25 x 20 in. / 67 x 51 cm.
Notes: signed lower right; framed; some restoration noted
ESTIMATE: \$4,000/6,000



LOT # 064.1

Artist: **GEORGIA JARVIS** ~ [1944-1990] Canadian
Title: *A Country Scene*
Media: oil on wood board
Size: 24 x 36 in. / 61 x 91 cm.
Notes: signed lower right; signed and titled verso; framed
Provenance: from a Calgary estate
ESTIMATE: \$2,500/3,500



LOT # 064.2

Artist: **GEORGIA JARVIS** ~ [1944-1990] Canadian
Title: *A Log Barn*
Media: oil on wood board
Size: 16 x 24 in. / 41 x 61 cm.
Notes: signed lower right; signed and titled verso; framed
Provenance: from a Calgary estate
ESTIMATE: \$1,800/2,400



LOT # 078.1

Artist: **ARTHUR LISMER** ~ [1885-1969] Canadian
Title: *3 Sketches in One Frame*
Media: ink on paper
Size: 3.25 x 7.5 in. / 8 x 19 cm.
Notes: signed along bottom on two of the drawings; bears title and inscriptions on label verso; framed
Provenance: Leon Katz Collection, label verso
ESTIMATE: \$600/800

Addendum for Fine Art Auction - Sunday, November 4, 2018



LOT # 429

Artist: **ROBERT CHARLES DAVIDSON** ~ [b.1946]

Title: *Moon [Green on Black]* #220/364

Media: silkscreen on paper

Size: 12.5 x 12.5 in. / 32 x 32 cm. Dated: 1976

Notes: signed, titled and numbered along bottom; unframed; some handling marks noted

Reference: catalogue raisonne #52 in **Robert Davidson: Haida Printmaker** by Hilary Stewart, published by Douglas and McIntyre, 1979

Provenance: from the Estate of Dr. [Marmie] Hess

ESTIMATE: \$150/250



LOT # 430

Artist: **REG DAVIDSON** ~ Canadian

Title: *Beaver* #189/199

Media: colour silkscreen on paper

Size: 7 x 7 in. / 18 x 18 cm. Dated: 1978

Notes: signed, titled, dated and numbered along bottom; in circle format; unframed; some handling marks noted

Provenance: from the Estate of Dr. [Marmie] Hess

ESTIMATE: \$100/200

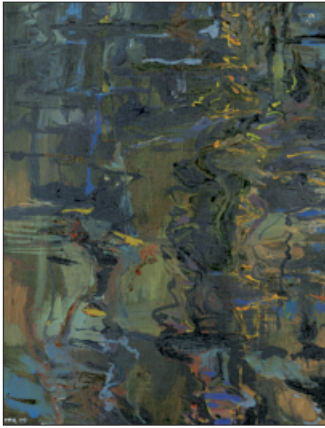


Parking

Preview and Auction Location

Roderick Mah Centre for Continuous Learning
Mount Royal University
4825 Mount Royal Gate SW
Calgary AB T3E 7N5

CANADIAN ART
LOTS 001 - 119



001 ■ David T. Alexander
Dark Pools 2005 oil on canvas
\$1,200/1,500 18.25x14.25 in./46x36 cm.



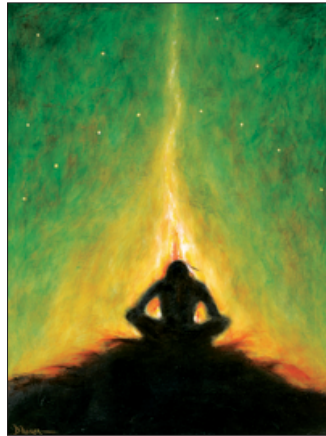
003 ■ Brian Marshall Atyeo
The Road Home 1998 acrylic on canvas
\$1,500/2,500 30x24 in./76x60 cm.



009 ■ Frederic Marlett Bell-Smith
Canoeing on Emerald Lake oil on wood board
\$2,500/3,500 10x16 in./25x40 cm.



002 ■ Brian Marshall Atyeo
Ethereal Form acrylic on canvas
\$900/1,200 27.75x19.75 in./70x50 cm.



004 ■ Dale Auger
The Quest 1998 acrylic on canvas
\$1,500/2,000 24x18 in./60x45 cm.



010 ■ Frederic Marlett Bell-Smith
Lake Louise oil on paper board
\$2,500/3,500 9x12.25 in./22x31 cm.



006 ■ Maxwell Bennett Bates
West Indian Puppets 1972
\$20,000/30,000

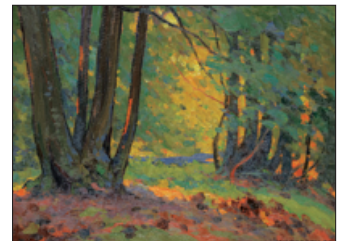
oil on canvas
24x35.75 in./60x90 cm.



005 ■ Nixie Barton
Peppers in Paradise 1990 oil on canvas
\$1,200/1,500 59.75x35.75 in./151x90 cm.



007 ■ Maxwell Bennett Bates
Untitled - French Hotel pastel on paper
\$900/1,200 8.5x12.5 in./21x31 cm.



008 ■ John William Beatty
Autumn Landscape 1928 oil on wood board
\$4,000/6,000 10x13.5 in./25x34 cm.



011 ■ Frederic Marlett Bell-Smith
On the Nipigon River watercolour on paper
\$800/1,000 6.25x12.5 in./15x31 cm.



012 ■ David Lloyd Blackwood
Chagall in the Front Room 1999 monprint
 \$2,000/3,000 23.75x19.75 in./60x50 cm.



013 ■ David Lloyd Blackwood
Home in Wesleyville 1979 etching on paper
 \$1,500/2,000 27.5x21.5 in./69x54 cm.



015 ■ Rick Bond
Branches of Pine acrylic on canvas
 \$2,000/2,500 30x59.75 in./76x151 cm.



014 ■ Molly Lamb Bobak
Out of Saint John
 \$10,000/15,000

oil on wood board
 40x30 in./101x76 cm.



016 ■ John H. Burrow
The Houndstooth oil on canvas
 \$2,000/2,500 30x30 in./76x76 cm.



017 ■ John H. Burrow
Backyard Hobby acrylic on canvas
 \$1,800/2,400 24x30 in./60x76 cm.



018 ■ John H. Burrow
Winter Play! acrylic on canvas
 \$1,500/2,000 24x24 in./60x60 cm.



019 ■ Joane Cardinal-Schubert
Poundmaker 1992 mixed media on paper
 \$1,500/2,000 23.5x31.25 in./59x79 cm.



020 ■ Joane Cardinal-Schubert
Buffalo Lodge 1980 mixed media on paper
 \$800/1,000 13.75x15.75 in./34x40 cm.



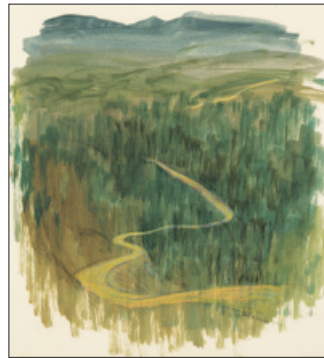
021 ■ Joane Cardinal-Schubert
Dancers mixed media on paper
 \$800/1,000 10.75x15.25 in./27x38 cm.



022 ■ Joane Cardinal-Schubert
Today's the Day mixed media on paper
\$400/500 4.75x6.75 in./12x17 cm.



025 ■ Rod Charlesworth
Laurentian Colour oil on canvas
\$2,000/3,000 30x40 in./76x101 cm.



029 ■ Alan Caswell Collier
Alaska Highway watercolour on paper
\$700/800 13.75x12.75 in./34x32 cm.



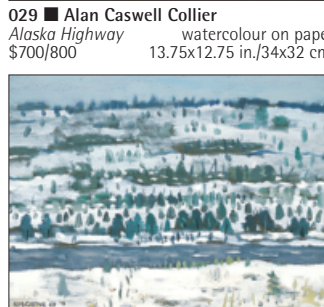
032 ■ Toller Cranston
Skater with a Big Flag 2012 acrylic
\$3,000/4,000 35x43.25 in./88x109 cm.



023 ■ Horace Champagne
Lake O'Hara 2010 pastel on paper
\$2,000/2,500 23.5x17.5 in./59x44 cm.



026 ■ Rod Charlesworth
Fireweed, Prelude Lake oil on canvas
\$1,500/2,000 22x28 in./55x71 cm.



030 ■ Stanley Morel Cosgrove
La Riviere, St. Maurice 1969 oil on canvas
\$2,000/3,000 12x16 in./30x40 cm.



033 ■ Duncan MacKinnon Crockford
Marshland Skein 1986 oil on canvas
\$2,500/3,500 30x40 in./76x101 cm.



027 ■ Alan Caswell Collier
Ingall's Head, Grand Manan oil on board
\$1,500/2,000 12x16 in./30x40 cm.



024 ■ Horace Champagne
Ile D'Orlean, Quebec 1982 pastel on paper
\$800/1,000 11x14 in./27x35 cm.



028 ■ Alan Caswell Collier
Kootenay Nat. Park watercolour on paper
\$900/1,200 10.75x14.5 in./27x36 cm.



031 ■ Patrick Douglass Cox
The Stranger 1992 acrylic on paper
\$1,500/2,500 20x16.25 in./50x41 cm.



034 ■ Duncan MacKinnon Crockford
Evening Seebe oil on canvas
\$1,500/2,000 24x35.75 in./60x90 cm.



035 ■ Duncan MacKinnon Crockford
View of Consort 1982 oil on canvas
\$900/1,200 16x20 in./40x50 cm.



036 ■ **Duncan MacKinnon Crockford**
Winter Comes to Banff 1982 oil on canvas
 \$900/1,200 16x20 in./40x50 cm.



038 ■ **Joseph [Joe] Fafard**
Calf Monet 1982 silkscreen on paper
 \$600/800 19x23.25 in./48x59 cm.



039 ■ **Lionel LeMoine FitzGerald**
Abstract coloured pencil on paper
 \$1,200/1,500 7.25x9.25 in./18x23 cm.



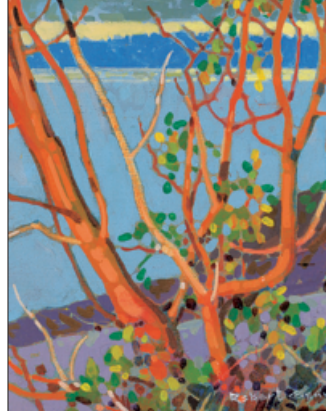
042 ■ **Richard Audley Freeman**
A Quiet Spot oil on wood board
 \$1,500/2,000 24x30 in./60x76 cm.



040 ■ **Lionel LeMoine FitzGerald**
Untitled - Sunset gouache on paper
 \$900/1,200 2.75x2.5 in./6x6 cm.



041 ■ **Dulcie Foo Fat**
Silver Willow with Asters 2009 oil on canvas
 \$3,000/4,000 27.75x22 in./70x55 cm.



044 ■ **Robert Genn**
Arbutus at Salt Spring oil on wood board
 \$1,000/1,200 10x8 in./25x20 cm.



037 ■ **Nicholas de Grandmaison**
Untitled - Blood Indian Brave 1930 ca.
 \$15,000/20,000 pastel on sandpaper
 19.5x15 in./49x38 cm.



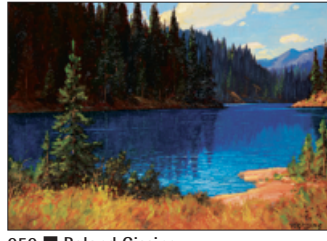
043 ■ **Clarence Alphonse Gagnon**
Canal du Laing, Moret 1908 etching
 \$800/1,000 5.5x8.25 in./13x20 cm.



045 ■ **Leonard [Len] James Gibbs**
Ranch Hand 1980 acrylic on wood board
 \$2,500/3,500 27x27 in./68x68 cm.



046 ■ Roland Gissing
Ghost Valley 1954 oil on canvas
 \$2,500/3,000 18x24 in./45x60 cm.



050 ■ Roland Gissing
Reflections, Ghost Lake 1954 oil on canvas
 \$2,000/2,500 16x22 in./40x55 cm.



054 ■ Roland Gissing
Still Waters oil on paper board
 \$1,200/1,500 12x15.75 in./30x40 cm.



058 ■ Henry George Glyde
Reclining Nude 1967 conte on paper
 \$750/1,000 17x22.75 in./43x57 cm.



047 ■ Roland Gissing
Fall Scene with Stooks oil on canvas
 \$2,000/2,500 24x30 in./60x76 cm.



051 ■ Roland Gissing
Untitled - View of Autumn oil on canvas
 \$2,000/2,500 20x23.75 in./50x60 cm.



055 ■ Roland Gissing
West of De Winton 1966 oil on canvas board
 \$1,200/1,500 12x16 in./30x40 cm.



059 ■ Ted Harrison
Saamis Teepee 1997 acrylic on canvas
 \$7,000/9,000 24x18 in./60x45 cm.



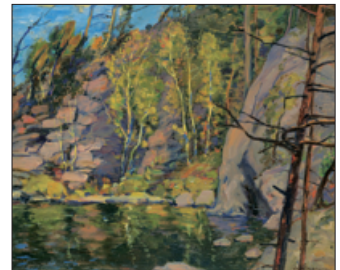
048 ■ Roland Gissing
Orchard on Kootenay Lake oil on canvas
 \$2,000/3,000 22x30 in./55x76 cm.



052 ■ Roland Gissing
Near Okotoks 1962 oil on canvas board
 \$1,200/1,500 12x16 in./30x40 cm.



056 ■ Roland Gissing
Untitled - Lake Louise pastel on paper
 \$1,200/1,500 16.5x23 in./41x58 cm.



060 ■ James Henderson
Lake Shoreline, Muskoka oil on wood board
 \$2,000/3,000 11.5x13.5 in./29x34 cm.



049 ■ Roland Gissing
Autumn in the Selkirks oil on canvas
 \$2,000/2,500 16x22 in./40x55 cm.



053 ■ Roland Gissing
Autumn Showers 1966 oil on canvas board
 \$1,200/1,500 12x16 in./30x40 cm.



057 ■ Henry George Glyde
Sunshine Near Banff 1971 oil on canvas board
 \$4,000/6,000 15.75x19.75 in./40x50 cm.



061 ■ Arthur Henry Hilder
Untitled - Hunting Party oil on canvas
 \$2,000/3,000 38.25x23.25 in./97x59 cm.



062 ■ Steve Hoar
The Greeting 1981 bronze sculpture
 \$800/1,000 16.25x10.5x4.5 in./41x26x11 cm.

063 ■ NO LOT



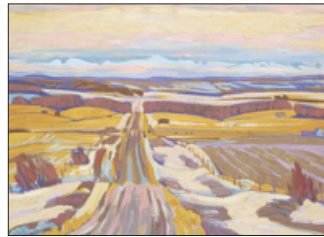
064 ■ School Inuit
Narwhal Tusk bone
 \$2,000/4,000 83x2x2 in./210x5x5 cm.



065 ■ Georgia Jarvis
Foothills Harvest oil on wood board
 \$1,800/2,400 18x24 in./45x60 cm.



066 ■ John Kasyn
At the Break of Dawn oil on wood board
 \$20,000/25,000 32x30 in./81x76 cm.



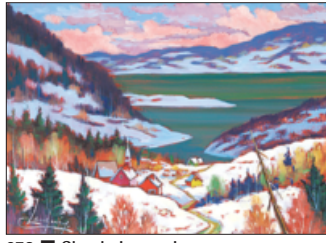
067 ■ Illingworth Holey Kerr
Foothills Road, Spring oil on canvas
 \$5,000/7,000 22x30 in./55x76 cm.



068 ■ Illingworth Holey Kerr
Aldersyde, Late Winter 1978 oil on board
 \$2,500/3,500 16x20 in./40x50 cm.



069 ■ Illingworth Holy Kerr
Fireweed, Storm Mountain 1984 oil on board
\$2,000/3,000 12x16 in./30x40 cm.



073 ■ Claude Langevin
Devant St. Laurent oil on canvas
\$1,000/1,500 12x16 in./30x40 cm.



070 ■ Claude Langevin
De Retour du Bois oil on canvas
\$2,000/3,000 24x30 in./60x76 cm.



074 ■ Claude Langevin
Journée de Janvier 2009 acrylic on canvas
\$800/1,000 12x10 in./30x25 cm.



071 ■ Claude Langevin
Debut de Neige acrylic on canvas
\$1,500/2,000 16x20 in./40x50 cm.



072 ■ Claude Langevin
Devant le Fleuve oil on canvas
\$1,000/1,500 12x16 in./30x40 cm.



075 ■ Maud Lewis
Pair of Oxen enamel on paper board
\$7,000/9,000 12x14 in./30x35 cm.



076 ■ Arthur Lismer
Tangle of the Forest, B.C. 1962
\$20,000/25,000

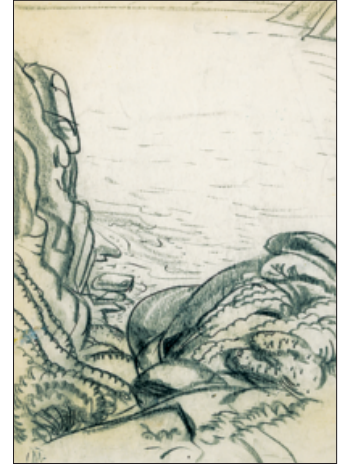
oil on canvas
16x20 in./40x50 cm.



077 ■ Arthur Lismer
Nova Scotia Dock oil on wood board
\$10,000/12,000 11.75x15.75 in./29x40 cm.



079 ■ Robert Elmer Lougheed
Winter Warmth oil on paper board
\$3,000/5,000 12x15.75 in./30x40 cm.



078 ■ Arthur Lismer
Rocky Shoreline graphite on paper
\$1,500/2,000 13.25x9.25 in./33x23 cm.



080 ■ Janet Mitchell
Untitled - Home for the Holidays
 \$2,000/3,000

watercolour on paper
 18x25 in./45x63 cm.



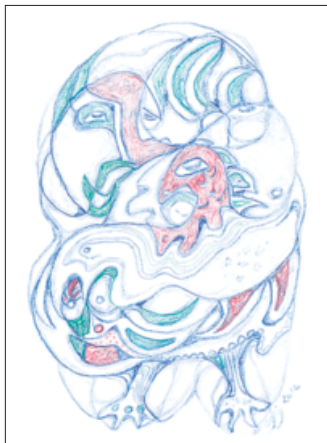
081 ■ Janet Mitchell
Promenade 1983
 \$1,500/2,000

watercolour on paper
 19x26.75 in./48x67 cm.



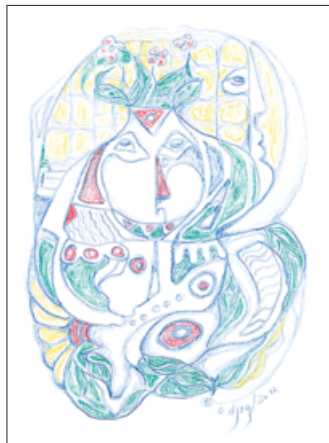
082 ■ Janet Mitchell
Sky Arch
 \$800/1,000

watercolour on paper
 12.5x16.25 in./31x41 cm.



083 ■ Daphne Odjig
The Unknown Keeper 2012
 \$800/1,000

coloured pencil
 9.75x6.25 in./24x15 cm.



084 ■ Daphne Odjig
Beyond Understanding 2012
 \$800/1,000

coloured pencil
 9.25x6.75 in./23x17 cm.



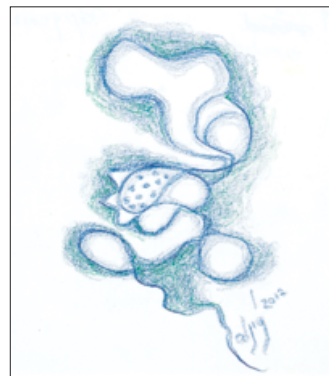
087 ■ Page Ough
Quartz Hill 2008
 \$2,000/3,000

acrylic on canvas
 40x40 in./101x101 cm.



085 ■ Daphne Odjig
Nesting Bird 2012
 \$800/1,000

coloured pencil
 5.5x4.75 in./13x12 cm.



086 ■ Daphne Odjig
Orchid in Bloom 2012
 \$800/1,000

coloured pencil
 5.25x3.25 in./13x8 cm.



088 ■ Page Ough
Paintbrush Panel IV 2008 acrylic on canvas
\$2,000/2,500 60x20 in./152x50 cm.



093 ■ Claude Picher
Moose with Moon 1992 oil on canvas
\$2,000/2,500 24x36 in./60x91 cm.



089 ■ Page Ough
Alpine Wild 2009 acrylic on canvas
\$900/1,200 24x24 in./60x60 cm.



090 ■ Herbert Sidney Palmer
Murray Point, Sask. oil on paper board
\$1,200/1,500 13.25x10.5 in./33x26 cm.



091 ■ Frank Shirley Panabaker
Fall in Dundas oil on canvas
\$4,000/5,000 24x30.25 in./60x76 cm.



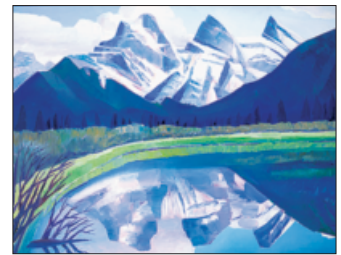
092 ■ Neil Patterson
Quiet Valley oil on canvas board
\$1,200/1,500 23.75x29.75 in./60x75 cm.



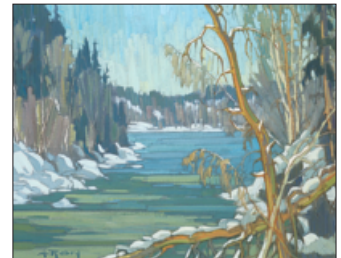
094 ■ Daniel Plante
Le Choix de Sophie 1986 acrylic on canvas
\$1,500/2,000 35.75x24 in./90x60 cm.



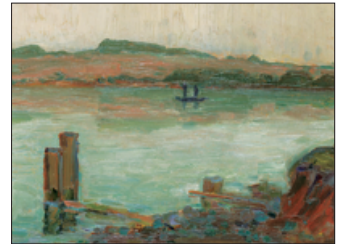
095 ■ Joseph Francis Plaskett
The Venetian Mirror [2] 1965 oil on canvas
\$2,500/3,500 24.75x29 in./62x73 cm.



096 ■ David Pugh
Untitled - Three Sisters oil on canvas
\$1,500/2,000 37.75x48 in./95x121 cm.



097 ■ Gaston Rebry
Arbre Brisee 1984 oil on canvas
\$1,000/1,500 16x20 in./40x50 cm.



098 ■ Sarah Margaret Armour Robertson
On the St. Lawrence oil on wood board
\$1,000/1,500 8.5x10.25 in./21x26 cm.



099 ■ Allen Sapp
Overtime at Sundown acrylic on canvas
\$4,000/5,000 24x36 in./60x91 cm.



100 ■ Allen Sapp
Going for Groceries 1993 ca. acrylic on canvas
\$3,000/5,000 24x36 in./60x91 cm.



104 ■ Allen Sapp
Feeding the Chickens acrylic on canvas
\$2,000/3,000 16x20 in./40x50 cm.



101 ■ Allen Sapp
Just Got Home 1980 acrylic on canvas
\$3,000/5,000 23x35.5 in./58x90 cm.



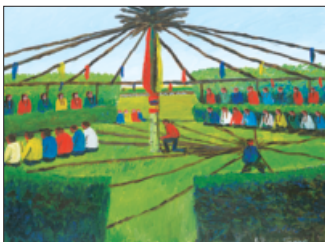
105 ■ Allen Sapp
Me and My Family acrylic on canvas
\$1,800/2,400 14x18 in./35x45 cm.



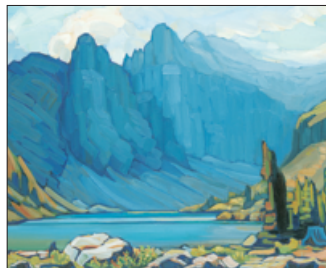
102 ■ Allen Sapp
We Are Finally Home 2006 acrylic on canvas
\$3,000/4,000 22x30 in./55x76 cm.



107 ■ Marian Mildred Dale Scott
Gate in Winter 1936 watercolour on paper
\$700/900 8.5x12.25 in./21x31 cm.



103 ■ Allen Sapp
Gathering for a Sundance acrylic on canvas
\$2,500/3,000 18x24 in./45x60 cm.



107.1 ■ Margaret Shelton
Mountain Lake 1975 oil on canvas board
\$1,500/2,000 20x24 in./50x60 cm.



106 ■ Marian Mildred Dale Scott
Sleigh Ride 1938
\$900/1,200

watercolour on paper
9.75x13.5 in./24x34 cm.



108 ■ Margaret Shelton
Police Barn North of Cochrane oil on board
\$1,000/1,500 18x24 in./45x60 cm.



110 ■ Douglas Stephens
The Rimrocks 1970 bronze sculpture
\$3,000/6,000 20x22x15.25 in./50x55x38 cm.



109 ■ Gordon Appelbe Smith
Seascape 1979 ca. watercolour on paper
\$1,500/2,500 18.75x22.75 in./47x57 cm.



111 ■ Douglas Stephens
Two on One 1971 bronze sculpture
\$900/1,200 9.75x14.5x8 in./24x36x20 cm.



112 ■ Douglas Stephens
Two Seconds Out bronze sculpture
 \$900/1,200 13.5x9.5x8 in./34x24x20 cm.



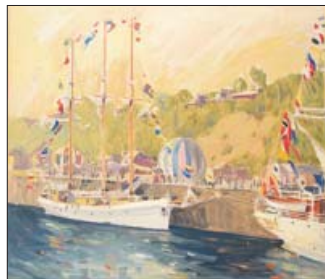
113 ■ William Lewy Leroy Stevenson
Trail to Mountains oil on canvas board
 \$1,500/2,000 16x20 in./40x50 cm.



114 ■ Marc-Aurele de Foy Suzor-Cote
Le Vieux Pionnier Canadien 1912 bronze
 \$7,000/9,000 15.5x16x8.25 in./39x40x20 cm.



115 ■ Marc-Aurele de Foy Suzor-Cote
La Compagne du Vieux Pionnier 1912 bronze
 \$7,000/9,000 15x16x9 in./38x40x22 cm.



117 ■ Arto Yuzbasiyan
Empire Sandy with Norwegian Ship oil
 \$1,500/2,000 25x29 in./63x73 cm.



118 ■ Vilem Zach
Bounty Hunter bronze sculpture
 \$2,500/3,500 27x15.5x7 in./68x39x17 cm.



119 ■ Vilem Zach
Happy Hour bronze sculpture
 \$2,000/3,000 26x8.75x9.5 in./66x22x24 cm.



116 ■ Marc-Aurele de Foy Suzor-Cote
Le Pere Fleury, Arthabaska bronze/plaster
 \$5,000/7,000 10.5x11x7 in./26x27x17 cm.

**CONTEMPORARY ART
 LOTS 201 - 232**



201 ■ David Bolduc
Martin Lake E. 1981 watercolour on paper
 \$1,500/2,000 40.25x28.5 in./102x72 cm.



202 ■ Alexander Calder
Le Affichistes lithograph on paper
 \$800/1,000 19.75x16 in./50x40 cm.



203 ■ Joanne [Corneau] Corno
Figure Study 2012 mixed media on paper
 \$2,500/3,500 29.5x21.5 in./74x54 cm.



204 ■ Jim Dine
Hose Lamp from Dorian Gray lithograph
 \$600/800 15.25x11.5 in./38x29 cm.



205 ■ Paul Fournier
Lakeside Morning - 1968 oil and pastel
\$1,500/2,000 44.25x49.75 in./112x126 cm.



206 ■ Gregory Hardy
Mid Summer's Eve 2012 acrylic on canvas
\$1,000/1,500 20x16 in./50x40 cm.



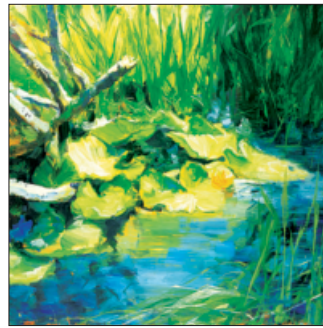
207 ■ Mara Hofmann
Mountain View 1995 oil on wood board
\$3,000/4,000 48x60 in./121x152 cm.



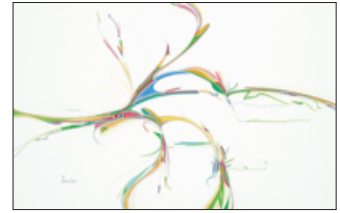
208 ■ Alex Janvier
Blue Horse 2008
\$9,000/12,000



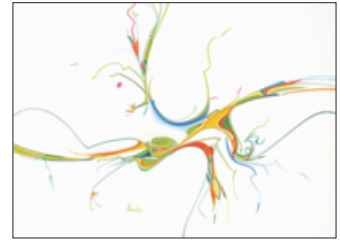
211 ■ Christopher Kier
Tableau Series mixed media encaustic
\$1,500/2,500 48.25x48.25 in./122x122 cm.



212 ■ John A. Macdonald
Saint Mary's Lake 2006 oil on canvas
\$2,500/3,500 48x48 in./121x121 cm.



209 ■ Alex Janvier
A Delicate Balance gouache on paper board
\$3,000/5,000 14.25x22.25 in./36x56 cm.



210 ■ Alex Janvier
Gentle Roots gouache on paper board
\$3,000/5,000 14.75x19.5 in./37x49 cm.

Henry Moore
Copyright Restrictions
Contact the office
for images and
more information

213 ■ Henry Spencer Moore
Figures on Striped Background 1973 lithograph
\$800/1,000 18x12.75 in./45x32 cm.



214 ■ Douglas Gibb Morton
Untitled - Seated Muse oil on wood board
 \$900/1,200 29.5x15 in./74x38 cm.



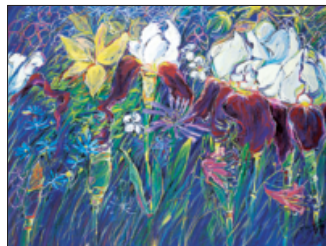
215 ■ Katie von der Ohe
Ripple 1973/74 bronze sculpture
 \$12,000/15,000 9.5x16.5x19 in./24x41x48 cm.



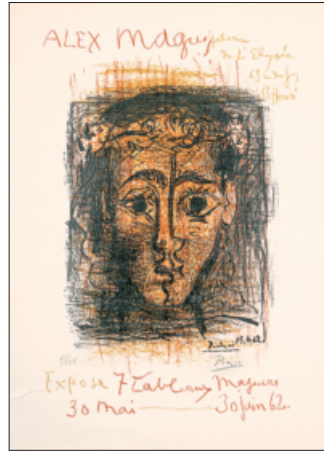
216 ■ Andre Petterson
Sketch 2006 mixed media on woodboard
 \$900/1,200 24.25x16 in./61x40 cm.



217 ■ Pablo Picasso
David and Bathsheba relief print on paper
 \$5,000/10,000 25.25x18.5 in./64x46 cm.



220 ■ Teresa Posyniak
Down in the Garden 1996 acrylic on canvas
 \$1,200/1,500 41x54 in./104x137 cm.



218 ■ Pablo Picasso
Alex Maguy Gallery 1962 lithograph
 \$800/1,000 21x14 in./53x35 cm.



219 ■ Teresa Posyniak
Beverly Hungry Wolf 2008 encaustic on canvas
 \$1,500/2,000 24x24 in./60x60 cm.



221 ■ Jean Richards
Field of Flowers oil on wood board
 \$1,200/1,500 23.5x35.75 in./59x90 cm.

Jean-Paul Riopelle
 Copyright Restrictions
 Contact the office
 for images and
 more information

222 ■ Jean-Paul Riopelle
Oiseau de Nuit colour etching on paper
 \$900/1,200 13.25x17.5 in./33x44 cm.



223 ■ Greg Robb
A Blue Aura 2018 welded metal sculpture
 \$1,500/2,000 13.75x21x10 in./34x53x25 cm.



224 ■ Greg Robb
A Skewed View 2017 welded metal sculpture
 \$1,500/2,000 26.75x14x4 in./67x35x10 cm.



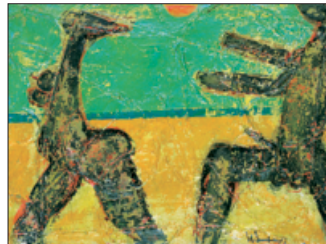
225 ■ Jack Leonard Shadbolt
Flowering Bush Series #5
\$4,000/6,000

acrylic on paper
39.75x26 in./100x66 cm.



226 ■ Bewabon Shilling
Clothesline Series #5
\$2,500/3,000

oil on canvas
24x36 in./60x91 cm.



227 ■ Herbert Johannes Joseph Siebner
Ancient Spring 1977
\$1,200/1,500

mixed media on board
11.5x15.25 in./29x38 cm.



228 ■ Herbert Johannes Joseph Siebner
Story Teller 1959
\$900/1,200

oil and wax on board
6.25x14.25 in./15x36 cm.



229 ■ Andy Warhol
Wayne Gretzky
\$18,000/24,000

colour silkscreen on paper
39.5x31.5 in./100x80 cm.



230 ■ John Will
Nothing
\$1,000/1,200

acrylic on paper
19x27 in./48x68 cm.



231 ■ Jeff Willmore
Morning - Lake Kanasuta 1997
\$1,500/2,000

acrylic
36x96 in./91x243 cm.



232 ■ Mary Ann [Toots] Zynsky
Birds of Paradise 1986
\$6,000/8,000

glass bowl
4.25x9.75x10 in./10x24x25 cm.

CONTEMPORARY ART LOTS 300 - 312



300 ■ Beltran Bofill
Picnic by the Shore
\$3,000/4,000

oil on canvas
35x45.75 in./88x116 cm.



301 ■ Antoine Bouvard
Venetian Canal
\$4,000/6,000

oil on canvas
19x25 in./48x63 cm.



302 ■ Jay Contway
Team Roper 1973
\$2,500/3,500

bronze sculpture
14x35.5x15.5 in./35x90x39 cm.



303 ■ Jay Contway
Cutter 1980
\$1,500/2,000

bronze sculpture
13x25x11 in./33x63x27 cm.



309 ■ Kathe Kollwitz
Pflugzieher und Weib 1902
 \$1,000/1,500



304 ■ Jay Contway
Untitled - Winter Scout bronze sculpture
 \$800/1,000 16x12.25x7.75 in./40x31x19 cm.



305 ■ Jay Contway
Cowboy 1984 bronze sculpture
 \$800/1,000 12.5x7x6 in./31x17x15 cm.



306 ■ Jay Contway
Cowboy Bust 1978 bronze sculpture
 \$500/700 8.25x6x5.5 in./20x15x13 cm.



307 ■ Edouard-Leon Cortes
Paris Flower Seller oil on canvas
 \$5,000/7,000 18x22 in./45x55 cm.



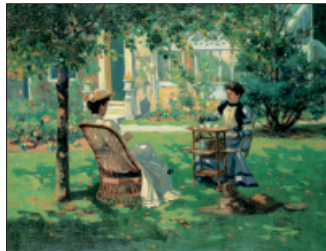
301.1 ■ George Frederick Castleden
Catching the Trade Winds 1897 oil on board
 \$1,500/2,000 16.5x24 in./41x60 cm.



310 ■ George W. Lundeen
Departure bronze sculpture
 \$1,500/2,500 15x27x16 in./38x68x40 cm.



311 ■ Dale C. Mathis
Mending a Broken Heart mixed media
 \$3,500/5,500 24x18x5 in./60x45x12 cm.



312 ■ Harry Spence
Afternoon Tea 1893 oil on canvas
 \$1,500/2,000 28x36 in./71x91 cm.



308 ■ Alfred Augustus II Glendening
At River's Edge 1902 oil on canvas
 \$900/1,200 12x20 in./30x50 cm.

4th SESSION
LOTS 401 - 536



401 ■ Jane Coulthard Adams
Hera I 2001 mixed media on canvas
 \$900/1,200 24x24 in./60x60 cm.



402 ■ Scott Addis
Deep Landscape acrylic on canvas
 \$500/700 46x57 in./116x144 cm.



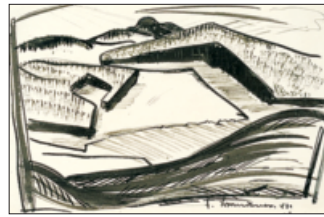
403 ■ Otto Axer
Four Figures at Night 1971 oil on canvas
 \$600/800 28.5x36 in./72x91 cm.



404 ■ **Otto Axer**
Standing Man 1970 oil on canvas
\$600/800 36x28 in./91x71 cm.



407 ■ **Maxwell Bennett Bates**
Beggars 2 colour lithograph on paper
\$700/900 17.75x14 in./45x35 cm.



411 ■ **Fritz Brandtner**
Abstract Landscape 1941 ink on paper
\$800/1,000 5.5x8.5 in./13x21 cm.



415 ■ **Annora Brown**
Red Flowers watercolour
\$600/800 9.5x13.75 in./24x34 cm.



405 ■ **Constance Bachmann**
Early Morning Poppyfield acrylic on canvas
\$800/1,000 36x36 in./91x91 cm.



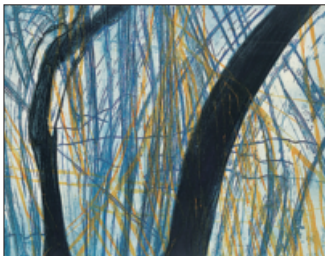
408 ■ **Thomas Harold Beament**
Crossing the Bay oil on wood panel
\$600/800 11.75x16 in./29x40 cm.



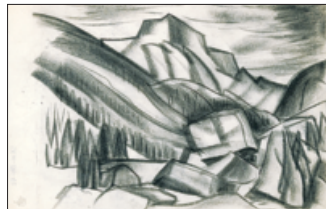
412 ■ **Frank Leonard Brooks**
Composition 2003 mixed media collage
\$500/700 9x7.25 in./22x18 cm.



416 ■ **Annora Brown**
Twinflower Linnaea Borealis gouache
\$600/800 9.5x13.5 in./24x34 cm.



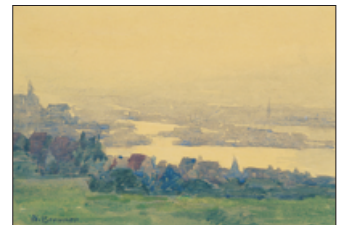
406 ■ **Edward John Bartram**
Rock Arc colour etching on paper
\$300/400 21.75x27.75 in./55x70 cm.



409 ■ **Andre Charles Bieler**
Rocky Mountains, Banff 1947 charcoal
\$500/700 6.25x10 in./15x25 cm.



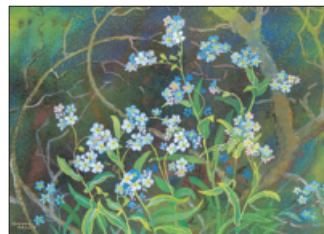
413 ■ **Annora Brown**
Prairie Anemone watercolour
\$600/800 9.5x13.75 in./24x34 cm.



417 ■ **William Brymner**
View of Ottawa 1890 watercolour on paper
\$500/700 4.5x6.25 in./11x15 cm.



410 ■ **After Jean-Antoine Houdon**
Bust of Voltaire bronze sculpture
\$600/800 12x5.5x6 in./30x13x15 cm.



414 ■ **Annora Brown**
Forget-Me-Not [Myosotis] watercolour
\$600/800 9.5x13.75 in./24x34 cm.



418 ■ **Bernard Buffet**
Les Lilas colour lithograph on paper
\$500/700 17.5x14.25 in./44x36 cm.



419 ■ Frederick Sproston Challerer
Quebec Garden, 1897 watercolour
 \$600/800 4.5x6.5 in./11x16 cm.



420 ■ Rod Charlesworth
Dene Winter 2003 oil on wood board
 \$700/900 12x16 in./30x40 cm.



421 ■ Ken Christopher
Road to the Rockies 1981 watercolour
 \$400/600 23.5x32.25 in./59x81 cm.



422 ■ Paraskeva Plistik Clark
The Clothing Line 1939 watercolour
 \$500/700 8.5x12.5 in./21x31 cm.



423 ■ Josette Couillard
Soiree au Clair de Lune acrylic
 \$800/1,000 24x30 in./60x76 cm.



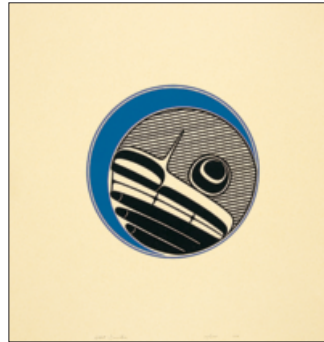
424 ■ Duncan Mackinnon Crockford
October Storm, N.S. 1984 oil on canvas
 \$600/800 16x20 in./40x50 cm.



425 ■ Duncan Mackinnon Crockford
River in the Foothills oil on wood board
 \$600/800 8x10 in./20x25 cm.



426 ■ Norman Hugh Dallin
Plant and Fruit Bowl 1991 oil on paper
 \$700/900 22.5x20 in./57x50 cm.



427 ■ Robert Charles Davidson
Moon [Green and Black on White] silkscreen
 \$150/250 8.5x8.5 in./21x21 cm.



428 ■ Robert Charles Davidson
Moon [Red and Green on Black] silkscreen
 \$150/250 8.5x8.5 in./21x21 cm.



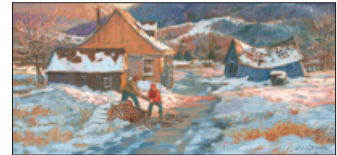
429 ■ Robert Charles Davidson
Moon [Green on Black] 1976 silkscreen
 \$150/250 12.5x12.5 in./31x31 cm.



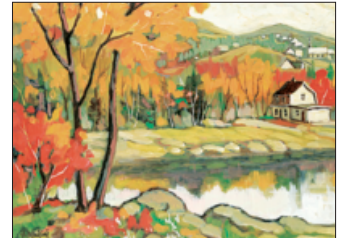
430 ■ Robert Charles Davidson
Four Circles/Frog 1977 silkscreen
 \$100/200 3.5x3.5 in./8x8 cm.



431 ■ Henri De Groot
After a Good Day's Work acrylic on wood board
 \$900/1,200 13.25x11.75 in./33x29 cm.



432 ■ Littorio Del Signore
Du Bois pour le Weekend 1986 oil on canvas
 \$700/900 11.75x24 in./29x60 cm.



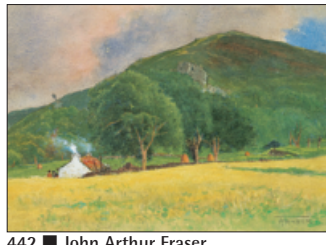
433 ■ Jean-Guy Desrosiers
Charlevoix oil on wood board
 \$400/500 12x16 in./30x40 cm.



434 ■ John Adrian Darley Dingle
Isle of Quinte, Ont. acrylic on wood board
\$400/600 10x16 in./25x40 cm.



438 ■ Terry Lynn Fenton
Passing Fancy 2004 oil on paper
\$300/400 11x15 in./27x38 cm.



442 ■ John Arthur Fraser
Near Oban 1888 watercolour on paper
\$400/500 9.5x13.5 in./24x34 cm.



445 ■ Leonard [Len] James Gibbs
Repairs 1975 oil on wood board
\$900/1,200 14.5x23.25 in./36x59 cm.



435 ■ Cameron Douglas
Back Stretch 1983 bronze sculpture
\$500/700 5.25x5x1.75 in./13x12x4 cm.



439 ■ Jonathan Forrest
Lines 1994 watercolour on paper
\$500/700 30.75x22.5 in./78x57 cm.



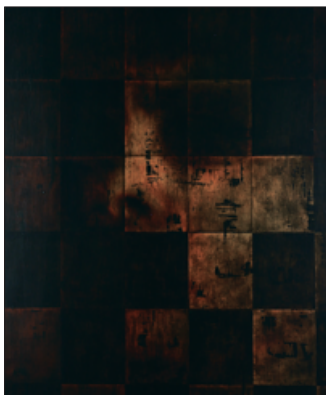
443 ■ Marjorie Earle Gass
Dominion Square 1927 oil on canvas
\$500/1,000 18x22 in./45x55 cm.



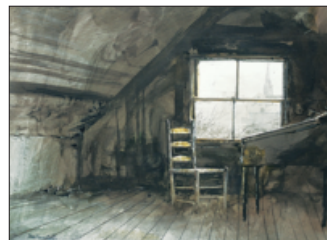
446 ■ Leonard [Len] James Gibbs
Slim's Horse 1970 oil on wood board
\$700/900 11.75x26 in./29x66 cm.



447 ■ Gregory Hardy
Looking North 1979 watercolour on paper
\$400/500 21.5x28 in./54x71 cm.



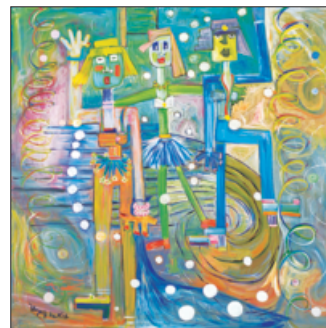
436 ■ Greg Edmonson
Trace XI [11] 1996 oil on canvas
\$1,000/1,500 31.5x26.25 in./80x66 cm.



440 ■ Thomas [Tom] DeVany Forrestand
West Window watercolour on paper
\$900/1,200 14.25x19.25 in./36x48 cm.



444 ■ Adrien Etienne Gaudet
Faucheur 1899 bronze sculpture
\$300/400 16.25x6x6 in./41x15x15 cm.



448 ■ Elizabeth [Eliza] Hemingway
Hawkins oil
Bright Lights and the Bubble Machine oil



437 ■ Terry Lynn Fenton
Weather Wise Farm 2001 oil on paper
\$500/700 18x30 in./45x76 cm.



441 ■ Thomas [Tom] DeVany Forrestand
Spring Creek Thaw watercolour on paper
\$700/900 13.75x21.25 in./34x53 cm.



449 ■ Kate Adeline Smith Hoole
Dutch Girl watercolour on paper
\$600/800 13x9.5 in./33x24 cm.



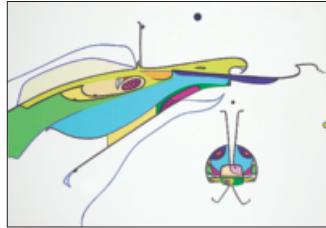
452 ■ Jessie Oonark
Whales 1972 colour stonecut on paper
\$300/500 8.25x11 in./20x27 cm.



453 ■ Martin Jacob Jackson
Santa Monica oil on canvas
\$500/700 24x36 in./60x91 cm.



450 ■ George A. Horvath
October Dusk 1983 oil on canvas
\$400/600 11.75x16 in./29x40 cm.



454 ■ Alex Janvier
EP-069 Eagle Insect 1975 silkscreen
\$300/500 24.25x37.5 in./61x95 cm.



451 ■ Luke/Manik Anguhadluq
On the Land 1970 stonecut on paper
\$300/400 19.75x15.25 in./50x38 cm.



455 ■ Frances-Anne Johnston
Tea in the Studio oil on canvas board
\$500/700 20x24 in./50x60 cm.



456 ■ Rajka Kupesic
Nude with Shawl pastel on paper
\$400/500 5x4 in./12x10 cm.



459 ■ Grant Leier
Restraint in Paradise mixed media
\$900/1,200 39.5x29.25 in./100x74 cm.



457 ■ Roy Leadbeater
Two Candlestick Holders bronze sculpture
\$600/800 1x1 in./2x2 cm.



460 ■ Alfred Crocker Leighton
Haystacks watercolour on paper
\$500/700 9.75x11.75 in./24x29 cm.



458 ■ Roy Leadbeater
Candlestick 1980's bronze sculpture
\$300/400 5.25x1.75x1.25 in./13x4x3 cm.



461 ■ Daniele Lemieux
Bowlful oil on canvas
\$700/900 15.75x15.75 in./40x40 cm.



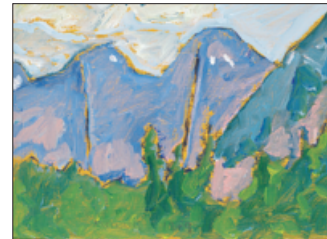
462 ■ **Luke Orton Lindoe**
Early Spring and Bridge 1978 watercolour
 \$700/900 18.5x24.75 in./46x62 cm.



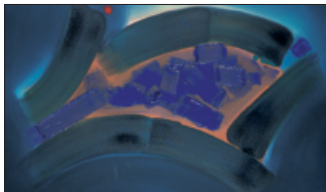
466 ■ **Marmaduke Matthews**
Banff, Alberta watercolour on paper
 \$600/800 14.5x19.5 in./36x49 cm.



469 ■ **Robert F.M. McInnis**
Untitled - Woman at Night 2003 oil on canvas
 \$500/700 14x11 in./35x27 cm.



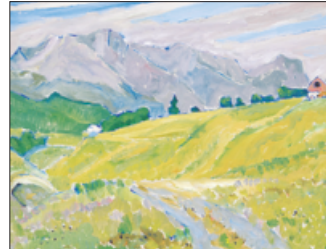
472 ■ **Robert F.M. McInnis**
Near Hope B.C. 1989 oil on wood board
 \$300/400 6x8.25 in./15x20 cm.



463 ■ **Phillip Mann**
Untitled - Blue Swoosh acrylic on canvas
 \$700/900 33.75x57.75 in./85x146 cm.



467 ■ **Robert F.M. McInnis**
Two Purple Clouds 2006 oil on wood board
 \$600/800 12x16 in./30x40 cm.



470 ■ **Robert F.M. McInnis**
Dirt Road Near Waterton, AB oil on board
 \$500/700 10x12 in./25x30 cm.



473 ■ **Janet Holly Middleton**
February Snow, Banff 1992 watercolour
 \$500/700 21x29 in./53x73 cm.



464 ■ **Vojtech Matousek**
Shoreline in Winter 1997 watercolour
 \$300/500 21.75x29.75 in./55x75 cm.



468 ■ **Robert F.M. McInnis**
Untitled - Sunflowers 1984 oil on canvas
 \$600/800 16x11.75 in./40x29 cm.



471 ■ **Robert F.M. McInnis**
Golden Harvest 2006 oil on wood board
 \$400/500 10x10 in./25x25 cm.



474 ■ **David Brown Milne**
The Painting Place 1930 etching on paper
 \$900/1,200 4.5x6.5 in./11x16 cm.



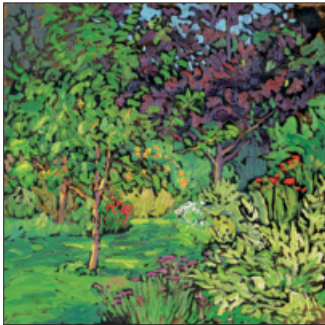
465 ■ **Vojtech Matousek**
White Shell 1998 watercolour on paper
 \$300/500 20.75x28.25 in./52x71 cm.



475 ■ **David John More**
Long Shadows, Long Road 2004 oil on board
 \$500/700 20x19.75 in./50x50 cm.



476 ■ David John More
Darkening Rise 2004 oil on wood board
 \$300/400 14x14 in./35x35 cm.



477 ■ David John More
Sun and Fruit Trees 2007 oil on wood board
 \$300/400 13x13 in./33x33 cm.



478 ■ David John More
The Memory Garden 2007 oil on wood board
 \$300/400 13x13 in./33x33 cm.



479 ■ Auguste Moreau
L'Amour et L'Innocence bronze sculpture
 \$600/800 20.5x8x7.5 in./52x20x19 cm.



480 ■ Auguste Moreau
Dans La Prairie bronze sculpture
 \$600/800 18x7.5x5.5 in./45x19x13 cm.



481 ■ Lucius Richard O'Brien
Canoeing on the Mist watercolour
 \$400/600 4x6.5 in./10x16 cm.



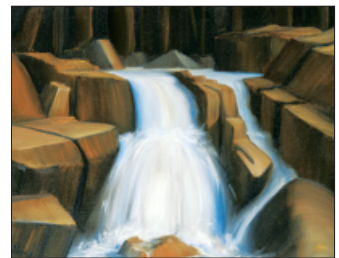
482 ■ Page Ough
Patience - Canada Goose acrylic on board
 \$500/700 12x12 in./30x30 cm.



483 ■ Pauline Thibadeau Paquin
Special Attraction 1985 oil on canvas
 \$750/1,000 24x20 in./60x50 cm.



484 ■ Glenn Payan
Island Vacation 2009 oil on canvas
 \$700/900 36x18 in./91x45 cm.



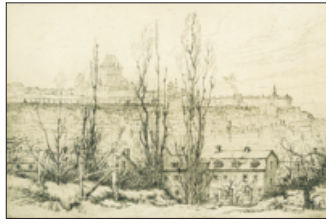
485 ■ Glenn Payan
Untitled - Waterfall oil on canvas
 \$300/400 11x13.75 in./27x34 cm.



486 ■ Catherine Pehudoff
Pink Forrest 1987 watercolour on paper
 \$600/800 22.25x30 in./56x76 cm.



487 ■ Catherine Perehudoff
Lake View 1982 watercolour on paper
 \$400/500 15.25x22.5 in./38x57 cm.



491 ■ Robert Wakeham
Pilot Quebec from Levis 1925 etching on paper
 \$750/1,000 7.25x11 in./18x27 cm.



496 ■ Ted Raftery
Dawn on a Lee Shore 1994 oil on canvas
 \$900/1,200 24x36 in./60x91 cm.



500 ■ Bill Reid
Haida Raven 1972 silk screen on paper
 \$500/700 16x15.75 in./40x40 cm.



488 ■ Joro Petkov
Early Morning Pond oil on canvas
 \$400/500 40x60 in./101x152 cm.



492 ■ Robert Wakeham
Fort Chambly, PQ etching on paper
 \$600/800 1.75x4.25 in./4x10 cm.



497 ■ Ted Raftery
Moonlight off Cebu 1998 oil on canvas
 \$800/1,000 24x30 in./60x76 cm.



501 ■ Bill Reid
Haida Grizzly [Bear] silk screen on paper
 \$500/700 19.5x13.75 in./49x34 cm.



489 ■ Walter Joseph Phillips
The Stump 1928 wood block on paper
 \$700/900 6.75x9 in./17x22 cm.



493 ■ Joseph Francis Plaskett
Harrington Harbour 1967 pastel on paper
 \$700/900 18x24 in./45x60 cm.



498 ■ Ted Raftery
Mt. Athabasca 1989 acrylic on canvas
 \$500/700 16x20 in./40x50 cm.



490 ■ Walter Joseph Phillips
The Field Barn 1925 wood block on paper
 \$600/800 8.75x10 in./22x25 cm.



494 ■ Adam Edwin Proctor
Untitled - Thrashing 1901 oil on wood board
 \$500/700 9.75x13.5 in./24x34 cm.



499 ■ Bill Reid
Haida Dogfish 1972 silk screen on paper
 \$500/700 19.25x19.75 in./48x50 cm.



502 ■ Bill Reid
Killer Whale 1973 silk screen on paper
 \$500/700 16x16.75 in./40x42 cm.



495 ■ Adam Edwin Proctor
Girl in the Field 1901 oil on wood board
 \$500/700 9.5x13.75 in./24x34 cm.



503 ■ Bill Reid
Haida Beaver 1978
\$500/700

silkscreen on paper
22x14.5 in./55x36 cm.



504 ■ Bill Reid
Haida Wolf 1979
\$500/700

silkscreen on paper
16.5x17 in./41x43 cm.



505 ■ Bill Reid
Haida Thunderbird
\$500/700

silkscreen on paper
18.25x23 in./46x58 cm.



506 ■ Margaret G. Richardson
Pasture Roping 2005
\$700/900

acrylic on paper board
22x18 in./55x45 cm.



507 ■ Karin Richter
Busy Dock
\$800/1,200

pastel on board
17.5x23.5 in./44x59 cm.



508 ■ Juan Sala Santonja
From the Earth 1965
\$700/900

mixed media on canvas
24.5x40.25 in./62x102 cm.



509 ■ Juan Sala Santonja
Looking in the Mirror 1974
\$500/700

mixed media
28.75x21.25 in./73x53 cm.



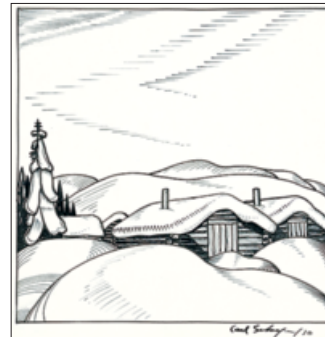
510 ■ Juan Sala Santonja
Trees on a Crimson Haze 1969
\$500/700

mixed media
27x19.25 in./68x48 cm.



511 ■ Noboru Sawai
Parade
\$300/400

wood block and etching on paper
17.75x23.75 in./45x60 cm.



512 ■ Carl Fellman Schaefer
Two Cabins, Winter, Hanover 1930
\$750/1,000

ink on paper
7x7 in./17x17 cm.



513 ■ John Ralph Schnurrenberger
Along the Fraser
\$700/900

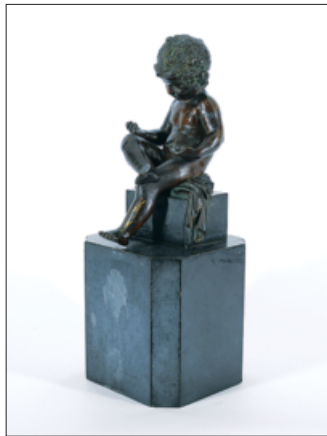
oil on canvas board
12x16 in./30x40 cm.



514 ■ Canadian School
Wayne Gretzky - Signed Jersey 2013
\$800/1,000 32x30.5 in./81x77 cm.



514.1 ■ European School
The Cello Player
\$300/400 oil on wood panel
6.5x8.25 in./16x20 cm.



515 ■ Unknown School
Untitled - Small Child
\$500/700 bronze sculpture
10x4.5x6.5 in./25x11x16 cm.



516 ■ Unknown School
Untitled - Female Head
\$500/700 bronze sculpture
10.5x7.5x9 in./26x19x22 cm.



517 ■ Unknown School
Untitled - Ice Fishing 1856
\$400/500 oil on canvas
10.75x12.5 in./27x31 cm.



518 ■ Regina Seib
Conduit
\$400/600 acrylic on canvas
24x24 in./60x60 cm.



519 ■ Herbert Johannes Joseph Siebner
Dada + Karl
\$600/800 watercolour on paper
9.75x9.5 in./24x24 cm.



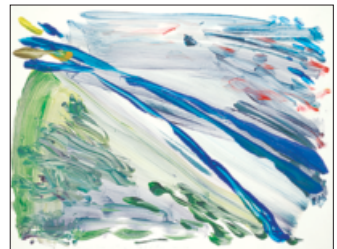
520 ■ Henry John Simpkins
Noontime at the Sugar Camp
\$400/600 watercolour
19x24.5 in./48x62 cm.



521 ■ Peter Etril Snyder
Homestead Feelings
\$600/800 oil on wood board
18x24 in./45x60 cm.



522 ■ William Lewy Leroy Stevenson
Lane to Building
\$400/500 watercolour on paper
7x9.5 in./17x24 cm.



523 ■ Carol Sutton
With Love To ... 1978
\$300/500 acrylic on paper
20x28.5 in./50x72 cm.



524 ■ Vance Theoret
Untitled - Brown Bear
\$600/800 stone carving
9.75x11.75x5.5 in./24x29x13 cm.



525 ■ Vance Theoret
Untitled - Green Bear stone carving
 \$600/800 9x8.75x6.75 in./22x22x17 cm.



526 ■ Vance Theoret
Untitled - Dancing Bear bronze sculpture
 \$400/500 8.5x7x4 in./21x17x10 cm.



527 ■ Mildred Valley Thornton
Under the Arbutus Tree watercolour
 \$400/500 9.75x10.75 in./24x27 cm.



528 ■ H. William Townsend
Stormy Coast, Vancouver oil on wood board
 \$500/700 11x13.75 in./27x34 cm.



529 ■ Tschernigoff
Untitled - An Exciting Ride oil on canvas
 \$400/500 6.25x11.5 in./15x29 cm.



530 ■ John Davenall Turner
Winter Chinook oil on paper board
 \$400/500 9.5x12.25 in./24x31 cm.



531 ■ Ina D.D. Uhthoff
Indian Days 1942 ca. charcoal on paper
 \$400/500 26.5x20 in./67x50 cm.



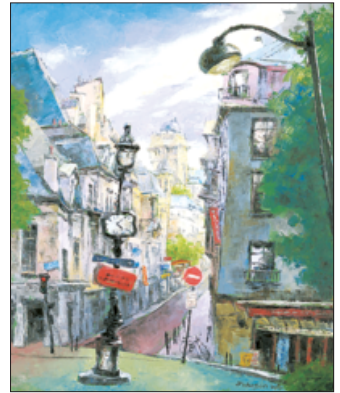
532 ■ Frederick Horsman Varley
Goats ink on paper
 \$800/1,000 6.5x8.5 in./16x21 cm.



533 ■ Ronald York Wilson
Blue Spectre mixed media on paper board
 \$800/1,200 10.75x9.75 in./27x24 cm.



534 ■ Mathew Wong
Deep Sleep Winter oil on canvas
 \$500/700 18x24 in./45x60 cm.



535 ■ Johnson Wu
Paris Dream IV 2009 acrylic on canvas
 \$600/800 24x20 in./60x50 cm.



536 ■ Jane Zednik
Woman from Buck Lake gouache on paper
 \$300/500 16x20 in./40x50 cm.

Visit our website for complete details on every lot including additional items to this sale.

www.levisauctions.com

Next auction: April 14, 2019

LIVE AUCTION INDEX

401	Adams; Jane Coulthard	423	Couillard; Josette	207	Hofmann; Mara
402	Addis; Scott	031	Cox; Patrick Douglass	449	Hoole; Kate Adeline Smith
001	Alexander; David T.	032	Cranston; Toller	450	Horvath; George A.
451	Anguhadluq; Luke	033-036	Crockford; Duncan MacKinnon	410	Houdon; After Jean-Antoine
002-003	Atyeo; Brian Marshall	424-425	Crockford; Duncan MacKinnon		
004	Auger; Dale			064	Inuit
403-404	Axer; Otto	426	Dallin; Norman Hugh	451-452	Inuit
		427-430	Davidson; Robert Charles		
405	Bachmann; Constance	037	de Grandmaison; Nicholas	453	Jackson; Martin Jacob
005	Barton; Nixie	431	De Groot; Henri	208-210	Janvier; Alex
406	Bartram; Edward John	432	Del Signore; Littorio	454	Janvier; Alex
006-007	Bates; Maxwell Bennett	433	Desrosiers; Jean-Guy	065	Jarvis; Georgia
407	Bates; Maxwell Bennett	204	Dine; Jim	455	Johnston; Frances-Anne
408	Beament; Thomas Harold	434	Dingle; John Adrian Darley		
008	Beatty; John William	435	Douglas; Cameron	066	Kasyn; John
009-011	Bell-Smith; Frederic Marlett			067-069	Kerr; Illingworth Holey
409	Bieler; Andre Charles	436	Edmonson; Greg	211	Kier; Christopher
012-013	Blackwood; David Lloyd			309	Kollwitz; Kathe
014	Bobak; Molly Lamb	038	Fafard; Joseph [Joe]	456	Kupesic; Rajka
300	Bofill; Beltran	437-438	Fenton; Terry Lynn		
201	Bolduc; David	039-040	FitzGerald; Lionel LeMoine	070-074	Langevin; Claude
015	Bond; Rick	041	Foo Fat; Dulcie	457-458	Leadbeater; Roy
301	Bouvard; Antoine	439	Forrest; Jonathan	459	Leier; Grant
411	Brandtner; Friedrich [Fritz]	440-441	Forrestall; Thomas [Tom]	460	Leighton; Alfred Crocker
412	Brooks; Frank Leonard	205	Fournier; Paul	461	Lemieux; Daniele
413-416	Brown; Annora	442	Fraser; John Arthur	075	Lewis; Maud
417	Brymner; William	042	Freeman; Richard Audley	462	Lindoe; Luke Orton
418	Buffet; Bernard			076-078	Lismer; Arthur
016-018	Burrow; John H.	043	Gagnon; Clarence Alphonse	079	Lougheed; Robert Elmer
		443	Gass; Marjorie Earle	310	Lundeen; George W.
202	Calder; Alexander	444	Gaudez; Adrien Etienne		
019-022	Cardinal-Schubert; Joane	044	Genn; Robert	212	Macdonald; John A.
301.1	Castleden; George Frederick	045	Gibbs; Leonard [Len] James	463	Mann; Phillip
419	Challener; Frederick Sproston	445-446	Gibbs; Leonard [Len] James	311	Mathis; Dale C.
023-024	Champagne; Horace	046-056	Gissing; Roland	464-465	Matousek; Vojtech
025-026	Charlesworth; Rod	308	Glendening; Alfred Augustus II	466	Matthews; Marmaduke
420	Charlesworth; Rod	057-058	Glyde; Henry George	467-472	McCinnis; Robert F.M.
421	Christopher; Ken			473	Middleton; Janet Holly
422	Clark; Paraskeva Plistik	206; 447	Hardy; Gregory	474	Milne; David Brown
027-029	Collier; Alan Caswell	059	Harrison; Ted	080-082	Mitchell; Janet
302-306	Contway; Jay	448	Hawkins; [Eliza] Hemingway	213	Moore; Henry Spencer
203	Corno; Joanne [Corneau]	060	Henderson; James	475-478	More; David John
307	Cortes; Edouard-Leon	061	Hilder; Arthur Henry	479-480	Moreau; Auguste
030	Cosgrove; Stanley Morel	062	Hoar; Steve	214	Morton; Douglas Gibb

481	O'Brien; Lucius Richard	106-107	Scott; Marian Mildred Dale
083-086	Odjig; Daphne	518	Seib; Regina
215	Ohe; Katie von der	225	Shadbolt; Jack Leonard
452	Oonark; Jessie	107.1-108	Shelton; Margaret
087-089	Ough; Page	226	Shilling; Bewabon
482	Ough; Page	227-228	Siebner; Herbert Johannes
		519	Siebner; Herbert Johannes
090	Palmer; Herbert Sidney	520	Simpkins; Henry John
091	Panabaker; Frank Shirley	109	Smith; Gordon Appelbe
483	Paquin; Pauline Thibadeau	521	Snyder; Peter Etril
092	Patterson; Neil	312	Spence; Harry
484-485	Payan; Glenn	110-112	Stephens; Douglas
486-487	Perehudoff; Catherine	113; 522	Stevenson; William Lewy Leroy
488	Petkov; Joro	523	Sutton; Carol
216	Petterson; Andre	114-116	Suzor-Cote; Marc-Aurele de Foy
489-490	Phillips; Walter Joseph		
217-218	Picasso; Pablo	524-526	Theoret; Vance
093	Picher; Claude	527	Thornton; Mildred Valley
491-492	Pilot; Robert Wakeham	528	Townsend; H. William
094	Plante; Daniel	529	Tschernigoff
095	Plaskett; Joseph Francis	530	Turner; John Davenall
493	Plaskett; Joseph Francis		
219-220	Posyniak; Teresa	531	Uhthoff; Ina D.D.
494-495	Proctor; Adam Edwin		
096	Pugh; David	532	Varley; Frederick Horsman
496-498	Rafferty; Ted	229	Warhol; Andy
097	Rebry; Gaston	230	Will; John
499-505	Reid; Bill	231	Willmore; Jeff
221	Richards; Jean	533	Wilson; Ronald York
506	Richardson; Margaret G.	534	Wong; Mathew
507	Richter; Karin	535	Wu; Johnson
222	Riopelle; Jean-Paul		
223-224	Robb; Greg	117	Yuzbasiyan; Arto
098	Robertson; Sarah Margaret		
		118-119	Zach; Vilem
508-510	Sala Santonja; Juan	536	Zednik; Jane
099-105	Sapp; Allen	232	Zynsky; Mary Ann [Toots]
511	Sawai; Noboru		
512	Schaefer; Carl Fellman		
513	Schnurrenberger; John Ralph		
514	School; Canadian		
514.1	School; European		
515-517	School; Unknown		

Visit our website for complete details on every lot including additional items to this sale.

www.levisauctions.com

Next auction: April 14, 2019

LEVIS

FINE ART AUCTIONS & APPRAISALS

1739 10 Avenue SW
Calgary AB T3C 0K1

