



**38** BELMORE BROWNE  
oil on canvas board 15.75 x 19.75 in.

A WILDERNESS VALLEY - NORTHERN ROCKIES, RED DEER RIVER TRIBUTARY  
\$6,000/8,000

# LEVIS

FINE ART AUCTIONS & APPRAISALS

A DIVISION OF ARTBANK INC.

## FINE ART AUCTION

— BUYERS PREMIUM 10% IN EFFECT —

Including the Property from local, national and international private and corporate collections, estates and foundations.

### PREVIEW

Saturday, May 3, 1997  
from 10 a.m. to 5 p.m.  
Sunday, May 4, 1997  
from 10 a.m. to 5 p.m.  
Monday, May 5, 1997  
from 10 a.m. to 2 p.m.



NOTE

### SILENT AUCTION

Sunday, May 4, 1997 at 4:00 p.m.  
**AUCTION**  
Monday, May 5, 1997 at 7:00 p.m.  
Tuesday, May 6, 1997 at 7:00 p.m.

**VICTORIA COMMUNITY ASSOCIATION**  
1302 (12 Avenue) 6 Street S.E.  
Calgary, Alberta

For more information contact Doug Levis, Levis Fine Art Auctions & Appraisals:  
#128, 1711 - 10 Avenue S.W., Calgary, Alberta T3C 0K1 **TEL: (403) 541-9099** FAX: (403) 541-9097  
CATALOGUE \$15 • \$17 BY MAIL (PLUS GST)  
ISBN 1203-3081



**4** RACING  
colour linoblock on paper  
SYBIL ANDREWS 10.25 x 13.25 in.  
\$7,000/9,000



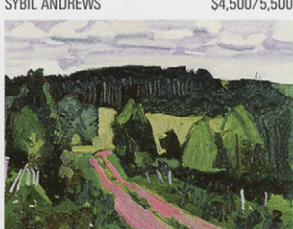
**5** GALE  
colour linoblock on paper  
SYBIL ANDREWS 9 x 9.75 in., 1930  
\$4,500/5,500



**6** UNTITLED - WEMBLEY EMPIRE ARENA  
mixed media on paper  
SYBIL ANDREWS 9.5 x 22.5 in.  
\$2,500/3,500



**16** SUMMER HOUSE  
oil on paper board  
MAXWELL BATES 14.5 x 11.75 in., 1947  
\$2,500/3,500



**15** TREES  
oil on canvas board  
MAXWELL BATES 16 x 20 in., 1958  
\$3,000/3,500



**24** LA FILEUSE  
wood block on paper  
ANDRE BIELER 6.25 x 4.5 in.  
\$600/800



**25** WESLEYVILLE: BURNING OF THE  
METHODIST CHURCH  
colour etching on paper  
DAVID BLACKWOOD 21.75 x 27.5 in., 1976  
\$2,000/2,500



**28** TULIPS  
monoprint on paper  
DAVID BLACKWOOD 17.75 x 23.75 in.  
\$1,500/2,000

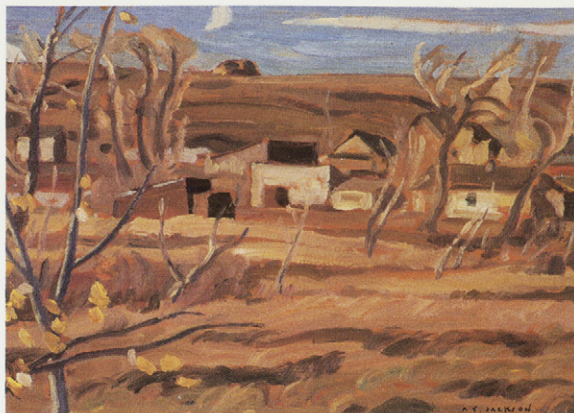
**19** BULL INN  
watercolour on paper  
F.M. BELL-SMITH 10.5 x 7.25 in., ca. 1887  
\$2,000/2,500



**20** BELOW THE FALLS, BANFF, N.W.T.  
watercolour on paper  
F.M. BELL-SMITH 7.5 x 10.25 in., Dated: 1888  
\$1,500/2,000

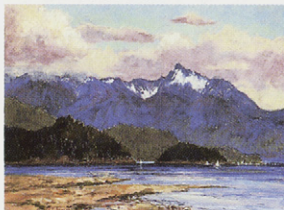


**41** LAKE SHORE  
oil on paper board  
ALFRED JOSEPH CASSON 9.25 x 11.25 in., Dated: 1930  
\$12,000/15,000



**106**  
oil on panel  
ALEXANDER YOUNG JACKSON

PINCHER CREEK, ALTA. '45  
10.5 x 13.5 in.  
\$8,000/10,000



**49** TWIN ISLANDS FROM HOPKINS LODGE  
pastel on coloured paper  
HORACE CHAMPAGNE



**54** UNTITLED  
oil on board  
ALBERTA MARY CLELAND

9.25 x 12.5 in., 1913  
\$1,200/1,500



**72** UNTITLED - THE HOMESTEAD  
oil on wood panel  
MARC-AURELE DE FOY FORTIN

5 x 9.75 in., 1930  
\$3,500/4,500



**80** HARVEST SCENE, SOUTHERN ALBERTA  
oil on canvas  
ROLAND GISSING

22 x 30 in.  
\$2,500/3,000



**35** WHARF, BANFF  
oil on canvas  
LOUISE SCOTT BREWSTER

9 x 10.75 in., 1943  
\$400/600



**42** GREY AUTUMN - JOE LAKE  
oil on paper board  
ALFRED JOSEPH CASSON

12 x 14.75 in., 1977  
\$7,000/9,000



**69** VILLAGE IN THE JURA MOUNTAINS  
watercolour on paper  
CLAUDE FLIGHT

13.5 x 19 in.  
\$900/1,200



**83** SILHOUETTES, ALBERTA  
watercolour on paper  
HENRY GEORGE GLYDE

11 x 14.75 in.  
\$800/1,000



**32** FALL ASTERS  
oil on masonite  
MOLLY LAMB BOBAK

48 x 40 in.  
\$4,000/5,000



**39** MOSTLY MOZART  
silkscreen on paper  
JACK BUSH

59 x 34 in., 1974  
\$1,000/1,500



**47** AUTUMN GLORY  
pastel on paper  
HORACE CHAMPAGNE

14.5 x 11.5 in.  
\$600/800



**55** MY THUNDERBIRD  
acrylic on canvas  
EDDY COBINISS

29.75 x 23.75 in., 1975  
\$1,000/1,500



**76** COMPOSITION  
PRE LUMINAIRES IV  
oil on canvas  
PIERRE GAUVREAU  
12 x 9 in., 1978  
\$1,800/2,400



**78** STUDY FOR SHELLING PEAS  
acrylic on paper  
LEONARD (LEN) GIBBS  
8.5 x 5.75 in., 1987  
\$500/600



**93** UNTITLED - THE BRIDGE & POOL  
watercolour on paper  
WILLIAM NOBLE HARDWICK  
14.5 x 10.75 in., 1833  
\$500/700



**97** UNTITLED - THE LUMBERJACK  
charcoal on paper  
EDWIN H. HOLGATE  
26 x 19.5 in.  
\$3,000/4,000



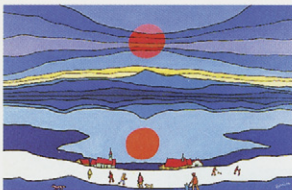
**86** BEAVER POND, KANANASKIS  
oil on panel  
TED GODWIN  
18 x 24 in.  
\$1,200/1,500



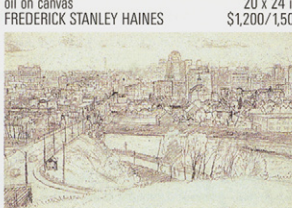
**91** UNTITLED - ONTARIO SUMMER  
oil on canvas  
FREDERICK STANLEY HAINES  
20 x 24 in.  
\$1,200/1,500



**101** UNTITLED - PRAIRIE WINTER  
watercolour on paper board  
ROBERT NEWTON HURLEY  
10.25 x 15 in., 1964  
\$400/600



**95** LAKESIDE SUN  
acrylic on canvas board  
TED HARRISON  
23.75 x 35.75 in., 1979  
\$2,000/3,000



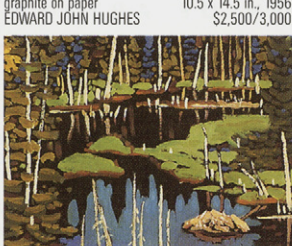
**98** CENTRE STREET BRIDGE, CALGARY  
graphite on paper  
EDWARD JOHN HUGHES  
10.5 x 14.5 in., 1956  
\$2,500/3,000



**120** NOTRE DAME DES MONTS-CHARLEVOIX QUE.  
acrylic on canvas  
LOUISE LECOR KIROUAC  
24 x 30 in.  
\$1,200/1,400



**111** LANE NEAR DANFORTH AVENUE  
oil on masonite  
JOHN KASYN  
7.5 x 12 in.  
\$1,400/1,800



**116** BEAVER POND, UPPER HIGHWOOD  
oil on canvas board  
ILLINGWORTH KERR  
11.75 x 15.75 in., 1985  
\$1,200/1,500



**134** UNTITLED - HIGH ALPINES, CAN. ROCKIES  
watercolour on paper  
ALFRED CROCKER LEIGHTON  
8.25 x 10.75 in.  
\$2,500/3,000



**121** BRIDGE UNDER MIST  
oil on masonite  
DOROTHY KNOWLES  
16 x 25.5 in., 1959  
\$1,800/2,200



**127** BOURASQUES DE VENT  
oil on canvas  
CLAUDE LANGEVIN  
27 x 35 in.  
\$2,250/2,750

## WHAT THE HECK IS GOING ON ?

Never been to an auction or having gone, wondered what is going on? Scared to scratch your ear and buy something you don't want. Come to a brief talk on how to buy at auctions.

**Saturday, May 3 and  
Sunday, May 4 at 1:00p.m.**  
at the preview.

# LEVIS

FINE ART AUCTIONS & APPRAISALS

A DIVISION OF ARTBANK INC.

## FINE ART AUCTION

### PREVIEW

Saturday, May 3, 1997  
from 10 a.m. to 5 p.m.

Sunday, May 4, 1997  
from 10 a.m. to 5 p.m.

Monday, May 5, 1997  
from 10 a.m. to 2 p.m.



### SILENT AUCTION

Sunday, May 4, 1997 at 4 p.m.

### AUCTION

Monday, May 5, 1997 at 7 p.m.

Tuesday, May 6, 1997 at 7 p.m.

at

VICTORIA COMMUNITY ASSOCIATION

1302 (12 Avenue) 6 Street S.E.

Calgary, Alberta

### AUCTIONEER'S NOTE

It's been a very hectic season in the office and I hope that contents of the catalogue is as pleasing to you as they are to me. Prior to any auction, the auctioneer has many highs and lows when it comes to expectations and this was no different.

I am very pleased to offer an early 1930 A.J. Casson as well as a rare Shadbolt watercolour from 1947. Both fine examples of the artist's early work. And talking about rare, very few Cleveland Rockwell paintings show up on the market and to have one from this area is a double pleasure. Some unexpected strengths in this auction are in the print sections of Sybil Andrews, David Blackwood and Walter J. Phillips. The later was recently honoured by Canada Post when his print York Boats was used for the Art Canada stamp. If I am not mistaken, I said I considered it one of the icons of Canadian art when I last sold a copy several years ago. I am also happy to offer another Carl Rungius painting, one I'll admit to having to confirm with a hunting friend that it is a bugling elk and not a barking deer.

I hope to see you out at the preview and auction to enjoy the show. May your spring and summer be a pleasant one.

For more information contact:

Doug Levis

### LEVIS FINE ART AUCTIONS & APPRAISALS

#128, 1711 - 10 Avenue S.W.

Calgary, Alberta T3C 0K1

TEL: (403) 541-9099 FAX: (403) 541-9097

G.S.T. R121 033 252

CATALOGUE \$15 • \$17 BY MAIL (PLUS G.S.T.)

MONDAY LIVE  
LOT #1-#152

TUESDAY LIVE  
LOT #201-#323

SUNDAY  
SILENT AUCTION  
LOT #401-#492

## STANDARD CONDITIONS OF SALE

---

1. LEVIS Fine Art Auctions & Appraisals, or LEVIS or "we" refer, for all purposes relating to this auction, to the corporation LEVIS Fine Art Auctions & Appraisals, a Division of Artbank Incorporated.
  2. A Buyer's Premium of 10% of the Hammer Price shall be added thereto and is payable by the Purchaser as part of the total purchase price.
  3. Goods and Services Tax of 7% will be charged on the Hammer Price and Buyer's Premium on all lots.
  4. Although LEVIS Fine Art Auctions & Appraisals take care and diligence in their catalogue of the lots offered for auction, all Property is sold "as is" and neither we nor our agents, auctioneers or other personnel nor the Consignor make any warranties or representations as to the correctness of the catalogue or other descriptions contained therein, of the physical condition, size, authenticity, or quality. Prospective bidders should inspect the property before bidding to determine its condition, size and whether the purchaser acquires any reproduction rights in the property.
  5. Notwithstanding the preceding conditions, if within fourteen days of the sale of any lot, the Purchaser can provide us the written opinion of two acknowledged experts that the art, as outlined in the glossary, is in effect mis-described in substantial particular in the catalogue and within fourteen days after such notice the Purchaser returns the lot to us in the same condition as when sold, we as agent for the Consignor will rescind the sale and refund the Purchase Price received by them.
- Due to the time requirements, expense and sometimes changing scholarly opinion of some artist's work, LEVIS cannot guarantee authentication on paintings, drawings, graphic art or sculpture created before 1900.
6. We reserve the right to withdraw any property before the moment of sale.
  7. Unless otherwise announced by the auctioneer, all bids are per lot as numbered in the catalogue.
  8. We reserve the right to reject any bid. The highest bidder acknowledged by the auctioneer will be the purchaser. In the event of a dispute between bidders, or in the event of doubt on the part of us as to the validity of any bid, the auctioneer will have the final discretion either to determine the successful bidder or to reoffer and resell the article in dispute. If any dispute arises after the sale, our sale record is conclusive.
  9. If the auctioneer decides without regard to the printed estimated price that any opening bid is below the value of the lot offered, he may reject the bid and withdraw the lot from the sale, and if, having acknowledged an opening bid, he decides that any advance thereafter is insufficient, he may reject the advance.
  10. On the fall of the auctioneer's hammer or indication of being sold, title to the offered lot will pass to the highest bidder acknowledged by the auctioneer, subject to conditions set forth herein, and such bidder thereupon will pay the full purchase price therefor or such part as we may require. All property must be removed from our premises by the purchaser at their expense not later than one business day following its sale and if is not so removed, a handling charge of 5% of the purchase price per month until removal of the property will be payable by the purchaser.
  11. Payment in full must be made on the day of the sale by cash, certified cheque, travellers cheque, Visa, MasterCard or bank draft, unless other arrangements have been made with the auction house prior to the sale.

## GUIDE FOR PROSPECTIVE BUYERS

---

A premium of 10% will be added to the hammer price of all Property sold. This premium is payable by all purchasers.

### GOODS AND SERVICES TAX

G.S.T. of 7% will be charged on the Hammer Price and on the Buyer's Premium.

### RESERVES

A reserve is the confidential minimum price agreed between the seller and the auction house, below which the art work will not ordinarily be sold. We do not accept reserve prices that would exceed the printed estimate. As agents for the consignor, we may place bids during the auction if the current bid is below the reserve on the lot being offered.

### ESTIMATES

As a service to our clients, we provide an estimate which in our opinion the lot offered may sell for based upon previous auctions results by the artist or something similar. These are only estimates and are not appraised values. In addition, estimates are worked on well in advance of the publication of the catalogue. Please contact the office on any particular lot. In the case of a lot with a reserve price, we do not allow the reserve to exceed the printed estimate.

## INFORMATION FOR CONSIGNORS

---

We are always looking for good art work to sell at auction. If you have something you think we may be interested in, please give us a call at our offices for a free confidential appointment.

Standard commission rates are as follows:

10% for lots selling for \$1,000 or more

15% for lots selling for under \$1,000

If there is a reserve price and the lot fails to sell, there is a reserve bid fee of 5% of the reserve price (minimum charge of \$100)

While the consignor is responsible for the reserve fee and shipping to and from the auction, the auction company is responsible for the following:

- advertising
- cataloguing and/or photography expenses
- insurance

### REGISTRATION

You should arrive before the auction to register for the auction. You will receive a card to fill out with a number on it, your bidding number. Please ensure that you have established credit references before the auction.

### BIDDING

If you are successful on a particular lot, you will be requested to show your bidder number.

### ABSENTEE BIDS

If you are unable to attend the auction, you may use the enclosed Absentee Bid form at the end of the auction catalogue. We will act on your behalf to try and purchase the lot(s) of your choice for the lowest possible price up to the top amount you indicate.

### PAYMENT

Payment may be made by cash, certified cheque, MasterCard, Visa, or bank draft. Payment must be made in full the day of the auction.

### REMOVAL OF PROPERTY

Once payment has been made in full, you may pick up your art work. Art work left with the auction company are left at the purchasers risk and peril.

### INFORMATION ON APPRAISALS

Written appraisals can be prepared for insurance, probate, family division or other purposes. Appraisal fees vary according to circumstance so please contact the office regarding particulars. A partial rebate of our fee will be made on appraised property subsequently accepted by us for sale.

### CATALOGUE SUBSCRIPTIONS

Catalogue subscriptions receive the highest priority and automatically receive auction results after the auction. Subscription rates are available for one or two year periods. Please contact the office for more information.

**NEXT AUCTION: NOVEMBER 3 & 4, 1997**

## GLOSSARY

The following terms are used in the catalogue and description of the artists and lots:

**Walter Joseph Phillips** – artist

**A.S.A., C.S.P.W.C., R.C.A.** – associations – see below

**[1884-1963]** – date of birth and death of artist

**Canadian** – nationality

**see** – references for particular artist

While this is the highest category of authenticity and is in our opinion, a work by the artist, it is made without qualifications as to authorship.

**PLEASE NOTE:** Due to the time requirements, expense and sometimes changing scholarly opinion of some artist's work, LEVIS can not guarantee authentication on paintings, drawings, graphic art or sculpture created before 1900.



– illustrated colour

**[b.1952]** – date of birth of artist

**ca.** – circa

**fl.** – flourished in and around this time period

**signed/dated/titled** – in our opinion, the work has been signed/dated/titled by the artist unless otherwise noted

**signed in plate/block** – in our opinion the art work was signed/dated/titled by the artist in the plate before printing

**bears signature/date/title** – in our opinion the signature/date/title is by a hand other than the artist

**verso** – on the reverse side

**archival mat** – front mat is of archival material

**archival material throughout** – work has been examined out of the frame and in our opinion all framing is of archival material

**Denglas** – glazed with Denglas material

**unframed** – all work is framed unless noted as unframed

**size** – size is always height by width (by depth for sculpture) in inches rounded down to the nearest quarter of an inch and to the nearest whole centimetre

**Ref** – reference

**Prov** – provenance – indicates previous owners either by way of labels and/or other information. This is not necessarily an indication of present ownership.

**LOT OF ??** – more than one item in lot

**ESTIMATE** – an estimate of what the art work may sell for but it is only intended as an estimate

The following abbreviations are used for professional associations and societies:

A.A.F. – Alberta Art Foundation/  
Alberta Foundation for the Arts

A.C.A. – Alberta College of Art

A.F.A. – Alberta Foundation for the Arts/  
Alberta Art Foundation

A.G.G.V. – Art Gallery of Greater Victoria

A.G.O. – Art Gallery of Ontario

A.R.C.A. – Associate Royal Canadian  
Academy of Arts (1880)

A.R.E. – Associate Royal Society of  
Painter-Etchers and Engravers

A.S.A. – Alberta Society of Artists (1931)

B.C.S.A. – British Columbia Society of Artists

C.G.P. – Canadian Group of Painters (1933-69)

C.P.E. – Society of Canadian Painter-Etchers  
and Engravers (1916-76)

C.S.G.A. – Canadian Society of Graphic Art  
(1923-76)

C.S.P.W.C. – Canadian Society of Painters in  
Water Colours (1925)

Dict. – Dictionary

E.A.G. – Edmonton Art Gallery

F.C.A. – Federation of Canadian Painters (1941)

M.S.A. – Manitoba Society of Artists

N.G.C. – National Gallery of Canada

O.S.A. – Ontario Society of Artists (1872)

P.S.C. – Pastel Society of Canada

R.A. – Royal Academy (1768)

R.B.A. – Royal Society of British Artists

R.C.A. – Royal Canadian Academy of Arts (1880)

R.E. – Royal Society of Painter-Etchers & Engravers

R.S.A. – Royal Scottish Academy

R.M.S. – Royal Miniature Society

S.W.E. – Society of Wood Engravers (1919)

V.A.G. – Vancouver Art Gallery



**SILENT AUCTION, LOT #401 – 492  
SUNDAY MAY 4<sup>TH</sup> AT 4:00 P.M.****MONDAY MAY 5<sup>TH</sup> AT 7:00 P.M.  
LIVE AUCTION, LOT #1 – 152****PLEASE NOTE**

*Buyer's Premium: a Premium of 10% will be added to the Hammer Price of all property sold. The Premium is payable by all purchasers. Goods and Services Tax: G.S.T. of 7% will be charged on the total of the Hammer Price and on the Buyer's Premium.*

*Additional notes may be found at the front of the catalogue for prospective buyers.*

**HEINRICH ALDEGREVER**

[1502-1561] German

- 1** SUSANNA SURPRISED BY THE ELDER  
etching on paper  
4.25 x 3 in. / 11 x 8 cm. Dated: 1555  
5 x 3.5 in. / 13 x 9 cm. — Paper Size  
signed and dated with monogram in plate upper right;  
some discolouration and handling marks; unframed  
Ref: *Bartsch #30 (371)* from *The Story of Susanna*;  
illustrated pg.150, in *The Illustrated Bartsch*, Vol 16,  
ed.R.Koch, Abaris Books, N.Y., 1980; later period re-strike  
ESTIMATE: \$400/500
- 2** THE ELDERS STONED BY THE PEOPLE  
etching on paper  
4.5 x 3 in. / 11 x 8 cm. Dated: 1555  
5 x 3.5 in. / 13 x 9 cm. — Paper Size  
signed and dated with monogram in lower right;  
some discolouration and handling marks; unframed  
Ref: *Bartsch #30 (371)* from *The Story of Susanna*;  
illustrated pg.151, in *The Illustrated Bartsch*, Vol 16,  
ed.R.Koch, Abaris Books, N.Y., 1980; later period re-strike  
ESTIMATE: 400/500

**TERRY ANANNY**

20th century Canadian

- 3** VILLAGE AU QUEBEC  
acrylic on canvas  
12 x 16 in. / 30 x 41 cm.  
signed lower right; bears title on label verso  
ESTIMATE: 350/450

**SYBIL ANDREWS**

C.P.E.

[1898-1992] Canadian

see *Sybil Andrews, Colour Linocuts*, by P.White, Glenbow Museum, 1982; *Linocuts of the Machine Age — Claude Flight and the Grosvenor School*, by S.Coppel, Scolar Press, 1995; *Dict. of British Artists 1880-1940*, by J.Johnson, pg.27 for biography as well as *The Society of Canadian Painter-Etchers and Engravers in Retrospect*, by A.Oko, pg.73, Art Gallery of Hamilton, 1981

**4 RACING #35/60**

colour linoblock on paper  
10.25 x 13.25 in. / 26 x 34 cm. Dated: 1934  
12 x 14.75 in. / 30 x 37 cm. — Paper Size  
signed and numbered lower left;  
archival mat front and back  
Ref: cat.#32 in *Sybil Andrews — Colour Linocuts*,  
by P.White and used as the front cover in catalogue;  
cat.#SA32 in *Linocuts of the Machine Age*, by S.Coppel;  
exhibited in the 1934 Redfern Gallery exhibition and is  
included in the collection of the New York Public Library  
and the Art Institute of Chicago  
Prov: corporate collection, Calgary  
ESTIMATE: 7,000/9,000

**5 GALE #22/50**

colour linoblock on paper  
9 x 9.75 in. / 23 x 25 cm. Dated: 1930  
10 x 11.5 in. / 25 x 29 cm. — Paper Size  
signed, titled and numbered upper left;  
archival mat front and back  
Ref: cat.#11 in *Sybil Andrews — Colour Linocuts*,  
by P.White; cat.#SA11 in *Linocuts of the Machine Age*,  
by S.Coppel and illustrated in colour plate 17; exhibited  
at the Redfern Gallery in 1931 as well as Los Angeles  
in 1931 and Melbourne; included in the collection of  
the Auckland City Art Gallery, British Museum and the  
National Gallery of Australia  
Prov: private collection, California; J.H. Miller  
Frames and Pictures, Springfield, Mass. label verso  
ESTIMATE: 4,500/5,500

**6 UNTITLED — PRELIMINARY DRAWING FOR  
ICE HOCKEY AND SKATING, WEMBLEY EMPIRE ARENA**

mixed media on paper  
9.5 x 22.5 in. / 24 x 57 cm. Dated: ca. 1930  
signed lower left; some handling marks; archival mat  
Ref: according to *Sybil Andrews*, by P.White, pg.14,  
Sybil Andrews and Cyril Powers worked on a series of  
posters for the London Passenger Transport Board  
between 1929 and 1937; the artist obviously liked the  
design as she reused it with some changes in 1953 as  
the source for *Skaters' White* cat.#52;  
see *Linocuts of the Machine Age*, by S.Coppel,  
Cyril Powers Coppel CA#29 and Coppel ESY#4  
Prov: Masters Gallery, Calgary, label verso  
ESTIMATE: 2,500/3,500

**SYBIL ANDREWS continued**

- 7** TYRRELLS — THE HOUSE OF BURY ST. EDMUNDS  
watercolour on paper  
4.25 x 3.25 in. / 11 x 8 cm. Dated: ca. 1921  
signed and titled below image  
Ref: according to *Something to Splash About*,  
*Sybil Andrews in Suffolk*, by C.Reeve, St. Edmundsbury  
Museum, 1991, the artist held an exhibition with  
Cyril Power in 1921 and then moved just outside  
of Bury St. Edmunds, where she was born, to  
Woolpit and renamed the 15th century cottage  
'Tyrrells' after her ancestors, pg.10  
ESTIMATE: 900/1,200



- 8** MOTHER AND SON #41/60  
colour linoblock on paper  
11 x 5.5 in. / 28 x 14 cm. Dated: 1932  
12.75 x 7.75 in. / 32 x 20 cm. — Paper Size  
signed, titled and numbered upper right;  
archival mat front and back  
Ref: *White cat.#22*; *Coppel SA #22*;  
print in the collection of the Ashmolean Museum, Oxford,  
British Museum, London and Glenbow Museum, Calgary  
Prov: Alex Fraser Galleries, Vancouver, label verso  
ESTIMATE: 700/900
- 9** PIETA #25/60  
colour linoblock on paper  
10.5 x 7 in. / 27 x 18 cm. Dated: 1932  
12 x 9 in. / 30 x 23 cm. — Paper Size  
signed, titled and numbered upper right;  
archival mat front and back  
Ref: *White cat.#23*; *Coppel SA #23*; print in the  
collection of the Ashmolean Museum, Oxford,  
British Museum, London and Glenbow Museum,  
Calgary; exhibited Redfern Gallery, London in 1932  
Prov: Alex Fraser Galleries, Vancouver, label verso  
ESTIMATE: 700/900

**CAROLINE ARMINGTON**

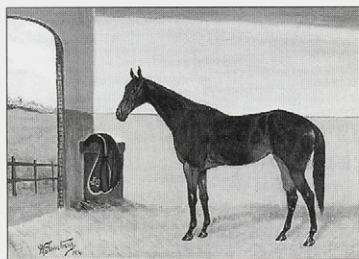
- [1875-1939] Canadian  
see *Caroline and Frank Armington — Canadian  
Painter-Etchers in Paris*, by N.Parke-Taylor, Art  
Gallery of Peel, 1990; *N.G.C. Vol.1, A-F*, ed.C.Hill,  
pg.17; *A.G.O.*, by the A.G.O., pg.7

- 1** MUSEE DU VIEUX HONFLEUR #15/100  
etching on paper  
13.25 x 7.25 in. / 34 x 18 cm. Dated: 1922  
titled in plate lower left;  
signed and numbered along bottom; archival mat  
Ref: catalogue #285 in *Caroline and Frank Armington*,  
*Canadian Painter-Etchers in Paris*, illustrated pg.129  
ESTIMATE: 400/500

**WILLIAM ARMSTRONG**

- A.R.C.A.  
[1822-1914] Canadian  
see *Early Days on the Great Lakes: the Art of  
William Armstrong* by H.Campbell, McClelland  
& Stewart, 1971; *William Armstrong 1822-1914*,  
*Watercolour Drawings of New Ontario*, by  
J.Clark, Thunder Bay Art Gallery, 1996; *N.G.C.  
Vol.1, A-F*, ed.C.Hill, pg.20; *E.P.E.C.*, by R.Harper,  
pg.10 for biography

- 1** DIRECTESE  
oil on canvas  
18 x 24 in. / 46 x 61 cm. Dated: 1914  
signed and dated lower left; titled on plaque;  
'G.B.' inscribed horse blanket  
Prov: John M'Lusky Picture Frames, Edinburgh, label verso  
ESTIMATE: 1,500/2,000



- 2** YOUNG WOODFORD  
oil on canvas  
18 x 24 in. / 46 x 61 cm. Dated: 1914  
signed and dated lower right; titled on plaque;  
'G.B.' inscribed horse blanket; some crackling  
Prov: John M'Lusky Picture Frames, Edinburgh, label verso  
ESTIMATE: 1,500/2,000

**WILLIAM WALTON ARMSTRONG**

[b.1916] Canadian biography and another example in *N.G.C., Vol.III*, by R.Hubbard, pg.4; exhibition list in *M.M.F.A.*, by E.McMann, pg.11; biography in *Dict. of Canadian Artists — Vol.1*, by C.MacDonald, pg.16

- 1**  
**3** UNTITLED — STILL LIFE WITH FIGURE PAINTING  
oil on canvas  
16 x 20 in. / 41 x 51 cm. Dated: 1982  
signed lower left  
Prov: corporate collection, Calgary  
ESTIMATE: 300/400

**WILLIAM EDWIN ATKINSON**

O.S.A., A.R.C.A.  
[1862-1926] Canadian biography in *E.P.E.C.*, by R.Harper, pg.11 — founding member of the Canadian Art Club; *N.G.C. Canadian Art, Vol.1, A-F*, ed.C.Hill, pg.26; exhibition list in *R.C.A.A.*, by E.McMann, pg.13

- 1**  
**4** EMERALD STREAM  
oil on panel  
8 x 10.25 in. / 20 x 26 cm. Dated: 1909  
signed and dated lower right; titled verso  
ESTIMATE: 700/900

**MAXWELL BENNETT BATES**

A.S.A., C.G.P., C.S.P.W.C., R.C.A.  
[1906-1980] Canadian see *Maxwell Bates, A Retrospective*, by I.Thom, A.G.G.V.; *Maxwell Bates: Landscapes 1948-1978*, by N.Townshend, Medicine Hat Art Gallery; *Maxwell Bates, Portrait of an Artist*, by K.Snow, University of Calgary Press and *N.G.C. Vol.1, A-F*, ed.C.Hill, pg.62 for works in the N.G.C.

- 1**  
**5** TREES  
oil on canvas board  
16 x 20 in. / 41 x 51 cm. Dated: 1958  
signed lower left; titled and artist's stamp verso  
Ref: cat.9 in *Maxwell Bates: Landscapes 1948-1978*, by N.Townshend, pg.41  
Prov: Canadian Art Galleries, Calgary and Masters Gallery, Calgary, labels verso  
ESTIMATE: 3,000/3,500

- 1**  
**6** SUMMER HOUSE  
oil on paper board  
14.5 x 11.75 in. / 37 x 30 cm. Dated: 1947  
signed and dated lower left; titled verso  
Ref: this was the year of the artist's first one person show held at Canadian Art Galleries as well as the Vancouver Art Gallery and Saskatoon Art Gallery  
ESTIMATE: 2,500/3,500

- 1**  
**7** UNTITLED — STUDY FOR THE CALGARY AIRPORT — INDIANS  
watercolour on paper  
8 x 29.75 in. / 20 x 76 cm. Dated: ca. 1957  
Art Gallery of Greater Victoria number 'MB449'  
written verso; archival mat front and back  
Ref: see *Maxwell Bates, A Retrospective*, by I.Thom, pg.18 for another example of this project  
ESTIMATE: 2,000/2,500



- 1**  
**8** MASKED REVELLER  
watercolour on textured paper  
21.5 x 15.75 in. / 55 x 40 cm. Dated: 1977  
signed and dated lower left; bears title on paper backing  
Prov: corporate collection, Calgary  
ESTIMATE: 600/800

**FREDERIC MARLETT BELL-SMITH**

O.S.A., R.C.A.  
[1846-1923] Canadian see *Frederic Marlett Bell-Smith [1846-1923]*, by R.Boulet, A.G.G.V., 1976; *N.G.C. Vol.1, A-F*, ed.C.Hill, pg.76; *Dict. of Canadian Artists — Vol.1*, by C.MacDonald, pg.36 and *E.P.E.C.*, by R.Harper, pg.26 for biography

- 1**  
**9** BULL INN  
watercolour on paper  
10.5 x 7.25 in. / 27 x 18 cm. Dated: ca. 1887  
signed lower left; archival mat  
Ref: 1887 was the year the artist had accepted 'White Head' his Diploma Picture for the Royal Canadian Academia of the Arts and now is in the National Gallery of Canada  
Prov: Masters Gallery, Calgary, label verso  
ESTIMATE: 2,000/2,500

- 2**  
**0** LOOKING DOWN THE BOW RIVER, BELOW THE FALLS, BANFF, N.W.T.  
watercolour on paper  
7.5 x 10.25 in. / 19 x 26 cm. Dated: 1888  
signed and dated lower right; titled along bottom; archival material throughout  
Ref: the artist held an exhibition at the Beaver Hall in Montreal after his first trip to the mountains in 1888; he exhibited several watercolours from around Banff including 'Below the Falls, Banff'  
Prov: private collection, Toronto  
ESTIMATE: 1,500/2,000

**HENRY ERIC BERGMAN**

C.P.E., C.S.P.W.C., M.S.A., R.C.A.

[1893-1958] Canadian

see *Transformation of Visions, The Works of H. Eric Bergman*, by N. Dillow, Winnipeg Art Gallery, 1983; *Images of the Land, 1919-1945*, by P. Ainslie, pg. 79; *N.G.C. Vol. 1, A-F*, ed. C. Hill, pg. 84

**21****UNTITLED — FLOWERS IN BOWL**

wood engraving on paper

4.25 x 5.5 in. / 11 x 14 cm.

signed; small glue stain in upper right corner

**TOGETHER WITH****UNTITLED — BRANCHES WITH BERRIES IN JUG**

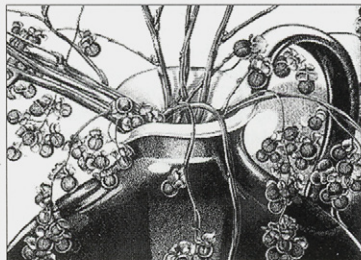
wood engraving on paper

4.5 x 5.75 in. / 11 x 15 cm.

bears title 'Celastrus Scandens'

along bottom — see note below

Ref: according to several catalogues on the artist, the print *Celastrus Scandens* measures 7 x 8 inches framed as pair; archival mat

**LOT OF TWO — ESTIMATE: 600/800****21A****UNTITLED — FLOWERS IN BOWL**

wood engraving on paper

4.25 x 5.5 in. / 11 x 14 cm.

signed; small glue stain in upper right corner

**ESTIMATE: 400/600****22****WILD ROSE**

wood engraving on paper

4 x 3 in. / 10 x 8 cm.

5.25 x 3.5 in. / 13 x 9 cm. — Paper Size

signed with initials in block lower right;

signed below image and signed inside card;

attached to Christmas card,

small tear upper left; archival mat

Prov: from the estate of Edith Carter, Winnipeg

**ESTIMATE: 250/350****23****WILD CLEMATIS**

wood engraving on paper

4 x 3 in. / 10 x 8 cm. Dated: 1950

5 x 4 in. / 13 x 10 cm. — Paper Size

signed with initials in block upper left; printed title below

image; card bears greeting and signature 'Eckhardt' [?]

Ref: illustrated and included in

*H. Eric Bergman Memorial Exhibition*, cat. #45

Prov: from the estate of Edith Carter, Winnipeg

**ESTIMATE: 250/350****ANDRE BIELER**

C.S.P.W.C., O.S.A., R.C.A.

[1896-1989] Canadian

see *Andre Bieler, An Artist's Life and Times*, by F. Smith, Merritt Publishing, 1980; *Images of the Land, 1919-1945*, by P. Ainslie, pg. 65; *N.G.C. Vol. 1, A-F*, ed. C. Hill, pg. 92, for examples in the *N.G.C.*; *M.M.F.A.*, by E. McMann, pg. 32 for exhibition list

**24****LA FILEUSE**

pochoir and wood block on paper

6.25 x 4.5 in. / 16 x 11 cm.

11.75 x 9 in. / 30 x 23 cm. — Paper Size

signed with monogram in block upper left; signed and

titled below image; archival mat front and back; unframed

Ref: the watercolour dated 1928 is illustrated in

*Andre Bieler*, by F. Smith, pg. 59;

the print is mentioned on the same page

**ESTIMATE: 600/800**

**DAVID LLOYD BLACKWOOD**

C.P.E., C.S.P.W.C., O.S.A., R.C.A.

[b.1941] Canadian

see *David Blackwood Prints 1962-1984*, by P.Grattan, Art Gallery, Memorial University of Newfoundland and *The Art of David Blackwood*, by W.Gough, McGraw Hill Ryerson, 1988 and *N.G.C. Vol.1, A-F*, ed.C.Hill, pg.96

**WESLEYVILLE: BURNING OF THE METHODIST CHURCH #A.P.**

colour etching on paper

21.75 x 27.5 in. / 55 x 70 cm. Dated: 1976

signed, titled, dated and numbered along bottom; archival mat

Ref: cat. #37 in *David Blackwood Prints 1962-1984*, and illustrated in *The Art of David Blackwood*, by W.Gough, pl.18

Prov: corporate collection, Calgary; West End Gallery, Edmonton, label verso  
ESTIMATE: 2,000/2,500

**62****FORTRESS OF LOUISBOURG, NOVA SCOTIA #14/35**

colour etching on paper

19.75 x 31.75 in. / 50 x 81 cm. Dated: 1973

signed, titled, dated and numbered along bottom

Prov: corporate collection, Calgary

ESTIMATE: 2,000/2,500

**27****THE RED GATE, TEMPLEMAN, BONAVENTURE BAY #A.P. 7/10**

colour etching on paper

14 x 33.75 in. / 36 x 86 cm. Dated: 1982

signed, titled, dated and numbered along bottom;

inscribed "Ed.50"; archival mat

Prov: corporate collection, Calgary

ESTIMATE: 2,000/2,500

**TULIPS**

monoprint on paper

17.75 x 23.75 in. / 45 x 60 cm. Dated: 1989

signed and dated upper left;

faint colour bleed in margins; archival mat

Prov: West End Gallery, Edmonton, label verso

ESTIMATE: 1,500/2,000

**92****GREAT MUMMER #58/75**

colour etching on paper

23.75 x 19.5 in. / 60 x 50 cm. Dated: 1989

signed, titled, dated and numbered along bottom;

archival mat

Prov: West End Gallery, Edmonton, label verso

ESTIMATE: 1,500/2,000

**ANTOINE BLANCHARD**

20th century European

**30****UNTITLED — MOULIN ROUGE**

oil on canvas

4.75 x 6.75 in. / 12 x 17 cm.

signed lower right

ESTIMATE: 500/600

**BRUNO BOBAK**

B.C.S.A., C.G.P., C.S.P.W.C., R.C.A.

[b.1923] Canadian

see *N.G.C. Vol.1, A-F*, ed.C.Hill, pg.99;*Vancouver: Art and Artists 1931-1983*, byV.A.G., pg.401; *Printmaking in B.C. 1883-1983*,by N.Tuele, A.G.G.V.; *Dict. of Canadian Artists —**Vol.1*, by C.MacDonald, pg.53**31****UNTITLED — LANDSCAPE**

watercolour and ink on paper

19 x 24.75 in. / 48 x 63 cm.

signed lower right

Ref: *Bruno Bobak Drawings*, by V.Baster,

Southern Alberta Art Gallery, 1983 included with lot

Prov: corporate collection, Calgary; Downstairs Gallery,

Edmonton, stamp verso

ESTIMATE: 400/500

**MOLLY LAMB BOBAK**

R.C.A.

[b.1922] Canadian

see the fine *Molly Lamb Bobak — a Retrospective*, by C.Richmond, MacKenzie Art Gallery, 1993 for other examples and biography; and *N.G.C. Vol.1, A-F*, ed. C.Hill, pg.102; *A.G.O.*, by the A.G.O., pg.36

**3**  
**2**  
**FALL ASTERS**

oil on masonite

48 x 40 in. / 122 x 102 cm. Dated: ca. 1973

signed lower right; signed and titled verso

Ref: another example of this subject in *Molly Lamb Bobak — a Retrospective*, by C.Richmond, cat.87

Prov: private collection, Edmonton

ESTIMATE: 4,000/5,000

**PAUL BOUGH**

19th century British

**3**  
**3****AN ENGLISH CHANNEL**

oil on canvas

12 x 17.75 in. / 30 x 45 cm.

signed and titled verso; canvas separated at corner

Prov: private collection, Calgary

ESTIMATE: 400/600

**FRITZ BRANDTNER**

C.G.P., C.S.G.A., C.S.P.W.C., F.C.A.

[1896-1969] Canadian

see *The Brave New World of Fritz Brandtner*, by H.Duffy, Agnes Etherington Art Centre, 1982; as well as *N.G.C. Vol.1, A-F*, ed.C.Hill, pg.124; *A.G.O.*, by the A.G.O., pg.40 for biography and other examples; *Dict. of Canadian Artists — Vol.1*, by C.MacDonald, pg.77 for biography

**3**  
**4****STUDY FOR A COLOURED WOODCUT**

coloured ink on paper

6.75 x 4.5 in. / 17 x 11 cm. Dated: ca. 1940

signed lower left; bears title on paper with initials of Paul Kastel, Montreal verso

ESTIMATE: 1,000/1,200

**LOUISE SCOTT BREWSTER**

[1906-1967] Canadian

the artist was born in Hespeler, Ont. and worked most of his life at Eatons in Winnipeg. He studied with A.Y. Jackson in Banff in 1943 and 1944. Newspaper clippings indicated that he travelled and exhibited in Paris for several years starting in 1960.

**3**  
**5**  
**WHARF, BANFF**

oil on canvas

9 x 10.75 in. / 23 x 27 cm. Dated: 1943

signed and dated lower left; titled and inscribed 'Co. A.Y. Jackson' verso

Prov: by descent to member of the family

ESTIMATE: 400/600

**3**  
**6****GOLDEN GATE, BANFF**

oil on canvas

9 x 11.25 in. / 23 x 29 cm. Dated: ca. 1943

titled verso

Prov: by descent to member of the family

ESTIMATE: 400/600

**FRANK LEONARD BROOKS**

C.P.E., C.S.G.A., O.S.A., R.C.A.

[b.1911] Canadian

see *Leonard Brooks, 1950-1984*, by the Canadian Embassy for Mexico, 1984; Leonard has lived at the San Miguel de Allende's Art School since 1947; *N.G.C. Vol.1, A-F*, ed.C.Hill, pg.139; *Dict. of Canadian Artists — Vol.1*, by C.MacDonald, pg.91

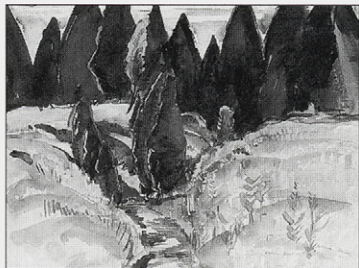
**3**  
**7****GREEN JUNE**

watercolour on paper

15 x 19.25 in. / 38 x 49 cm. Dated: 1946

signed, titled and dated lower right

ESTIMATE: 400/600



**BELMORE BROWNE**

A.N.A.

[1880-1954] American

see *The Mountains and the Sky*, by L.Render, pg.171, Glenbow Museum, 1974 for the Glenbow's numerous holdings of this artist; author of *The Conquest of Mt. McKinley* in 1913; photograph of the artist in *Pete n' Catharine, Their Story*, by J.Whyte, pg.29, Whyte Foundation, 1980; biography in *Dict. of American Painters*, by M.Fielding, pg.46

383

**A WILDERNESS VALLEY — NORTHERN ROCKIES, RED DEER RIVER TRIBUTARY**

oil on canvas board

15.75 x 19.75 in. / 40 x 50 cm.

signed lower right; signed and titled verso

Ref: possibly painted in 1938 and

later sold in the early 1950's

Prov: purchased by J.A.E. MacLeod, Calgary and by descent in the family; Canadian Art Galleries, Calgary  
ESTIMATE: 6,000/8,000

**JOHN [JACK] HAMILTON BUSH**

C.G.P., C.S.G.A., C.S.P.W.C., A.R.C.A.

[1909-1977] Canadian

see *Jack Bush*, ed. K.Wilkin, McClelland and Stewart, 1984; *A.G.O.*, by the A.G.O., pg.52; exhibition list in *R.C.A.A.*, by E.McMann, pg.59

399

**MOSTLY MOZART #139/144**

silkscreen on paper

59 x 34 in. / 150 x 86 cm. Dated: 1974

signed, dated, and numbered along bottom

Ref: "Bush worked on three large-scale works on paper,

one of which was chosen for a poster for the Lincoln Centre 'Mostly Mozart' Festival.",

*Jack Bush*, by K.Wilkin, pg.209

Prov: corporate collection, Calgary

ESTIMATE: 1,000/1,500

**PAUL ARCHIBALD CARON**

A.R.C.A.

[1874-1941] Canadian

see *N.G.C. Vol.1, A-F*, ed.C.Hill, pg.172; *Dict. of Canadian Artists — Vol.1*, by C.MacDonald, pg.118; *R.C.A.A.*, by E.McMann, pg.63 for exhibition list

40

**ROSCO'S HOTEL, ST. PAUL STREET, MONTREAL**

woodblock on paper

5.5 x 6.75 in. / 14 x 17 cm.

7.75 x 9 in. / 20 x 23 cm. — Paper Size

signed with monogram in block lower right;

signed and titled along bottom;

archival mat front and back; unframed

Ref: cat. #46 in *Images of the Land, 1919-1945*,

by P.Ainslie, illustrated pg.125

ESTIMATE: 450/550

**ALFRED JOSEPH CASSON**

C.S.P.W.C., C.G.P., O.S.A., R.C.A.

[1898-1992] Canadian

see *A.J. Casson*, by P.Duval, Roberts Gallery, 1975; *A.J. Casson*, by J.Murray, Art Gallery of Windsor, 1978; *A.J. Casson: His Life and Works / A Tribute*, by P.Duval, Cerebus, 1980; *N.G.C. Vol.1, A-F*, ed.C.Hill, pg.180; *A.G.O.*, by the A.G.O., pg.63; exhibition list in *R.C.A.A.*, by E.McMann, pg.65

41

**LAKE SHORE**

oil on board

9.25 x 11.25 in. / 23 x 29 cm. Dated: 1930

signed lower right; signed, titled and dated verso

Prov: Roberts Gallery, Toronto, label verso

ESTIMATE: 12,000/15,000

42

**GREY AUTUMN — JOE LAKE**

oil on paper board

12 x 14.75 in. / 30 x 37 cm. Dated: 1977

signed lower right;

signed, titled and dated on artist's label verso

Prov: Roberts Gallery, Toronto, label verso

ESTIMATE: 7,000/9,000

**GERARD CASTONGUAY**

[b.1933] Canadian  
biography and another example in *Guide  
Vallee, III Edition*, by F.Vallee, pg.296

- 4** UN DERNIER EFFORT  
**3** acrylic on canvas  
16 x 20 in. / 41 x 51 cm.  
signed lower right; signed and titled verso  
ESTIMATE: 1,000/1,200

**FREDERICK SPROSTON CHALLENGER**

C.S.P.W.C., O.S.A., R.C.A.  
[1869-1959] Canadian  
see *R.C.A.A.*, by E.McMann, pg.70; *A.G.O.*, by  
the A.G.O., pg.70; *N.G.C. Vol.1, A-F*, ed.C.Hill,  
pg.182; *Dict. of Canadian Artists — Vol.1*, by  
C.MacDonald, pg.124

- 4** UNTITLED — SUMMER, EDGE OF TOWN  
**4** watercolour on paper  
4.5 x 5.75 in. / 11 x 15 cm. Dated: 1891  
signed and dated lower left  
ESTIMATE: 400/500

**HORACE CHAMPAGNE**

P.S.C.  
[b.1937] Canadian  
see *Dict. of Canadian Artists — Vol.1*, by  
C.MacDonald, pg.addendum for biography;  
*Guide Vallee, III Edition*, by F.Vallee, pg.301,  
pub. Le Guide Vallee, 1992

- 4** JANUARY SUNRISE  
**5** pastel on coloured paper  
16.5 x 22.5 in. / 42 x 57 cm.  
signed lower right  
Prov: Guaranty Trust Company, label verso  
ESTIMATE: 900/1,200

- 4** SUNDAY AFTERNOON HARVEST, CALGARY, ALBERTA  
**6** pastel on coloured paper  
17 x 23 in. / 43 x 58 cm. Dated: 1982  
signed lower right; bears title and dated on paper verso  
Prov: corporate collection, Calgary  
ESTIMATE: 900/1,200



- 4** AUTUMN GLORY, LAKE MCARTHUR,  
**7** YOHO NATIONAL PARK  
pastel on coloured paper  
14.5 x 11.5 in. / 37 x 29 cm. Dated: 1996  
signed lower left; signed,  
titled and dated on artist's label verso  
ESTIMATE: 600/800

- 4** BEAUTIES OF LOW TIDE, ST. JOSEPH DE LA RIVE, QUEBEC  
**8** pastel on coloured paper  
12 x 15 in. / 30 x 38 cm. Dated: 1995  
signed lower right; signed, titled and  
dated on artist's label verso  
ESTIMATE: 600/800

- 4** TWIN ISLANDS FROM HOPKINS LODGE  
**9** pastel on coloured paper  
11.75 x 14.5 in. / 30 x 37 cm.  
signed lower right; bears title on label verso  
Prov: corporate collection, Calgary  
ESTIMATE: 600/800

- 5** AUTUMN SUR GRANDE ALLEE, QUEBEC CITY  
**0** pastel on coloured paper  
11.5 x 14.5 in. / 29 x 37 cm. Dated: 1986  
signed lower right; signed, titled and dated  
on artist's label verso  
ESTIMATE: 600/800

- 5** SPARKLING ICE FLOW, FERRY ARRIVING AT QUEBEC CITY  
**1** pastel on coloured paper  
7.75 x 9.5 in. / 20 x 24 cm. Dated: 1994  
signed lower right; signed, titled and dated  
on artist's label verso; archival mat  
Prov: Masters Gallery, Calgary, label verso  
ESTIMATE: 500/700

**ROD CHARLESWORTH**

[b.1955] Canadian  
listed in *Guide Vallee, III Edition*, by F.Vallee,  
pg.360, pub. Le Guide Vallee, 1992

- 5** OKANAGAN PONDEROSA  
**2** oil on masonite  
12 x 16 in. / 30 x 41 cm.  
signed lower right; signed and titled verso  
ESTIMATE: 400/600

- 5** BREAKING LIGHT AT HAYNES  
**3** oil on masonite  
10 x 12 in. / 25 x 30 cm.  
signed lower left; signed and titled verso  
ESTIMATE: 300/400



**ALBERTA MARY CLELAND**

[1876-1960] Canadian biography and another example in *N.G.C. Vol. III*, by R. Hubbard, pg. 54; exhibition list in *R.C.A.A.*, by E. McMann, pg. 74 and *M.M.F.A.*, by E. McMann, pg. 71

- 54** UNTITLED — LATE AFTERNOON, ST. LAWRENCE RIVER  
oil on board  
9.25 x 12.5 in. / 23 x 32 cm. Dated: 1913  
signed and dated lower right; inscribed '345' verso  
ESTIMATE: 1,200/1,500

**EDDY COBINESS**

[1934-1996] Canadian born in Minnesota, raised and lived in Manitoba; listed in *Artists in Canada — Union List*, N.G.C. Library, pg. 135

- 55** MY THUNDERBIRD  
acrylic on canvas  
29.75 x 23.75 in. / 76 x 60 cm. Dated: 1975  
signed and dated lower right; titled on card verso  
Prov: Little Gallery, Winnipeg, label verso  
ESTIMATE: 1,000/1,500

- 56** THE BEAVER  
watercolour on paper  
18 x 22.5 in. / 46 x 57 cm. Dated: 1974  
signed and dated lower right; bears title on backing verso  
ESTIMATE: 300/500

**DOUGLAS L. COCKBURN**

[b.1933] Canadian

- 57** ROCKY SENTINELS — WHALING STATION BAY, HORNBY ISLAND  
acrylic on canvas  
20 x 24 in. / 51 x 61 cm.  
signed lower right; signed and titled verso  
ESTIMATE: 1,000/1,200

**DUNCAN MACKINNON CROCKFORD**

[1920-1991] Canadian

- 58** UNTITLED — MOUNTAIN LANDSCAPE WITH ROAD  
oil on masonite  
23.75 x 29.25 in. / 60 x 74 cm. Dated: 1954  
signed and dated lower right  
Prov: private estate, Victoria  
ESTIMATE: 1,500/2,000

**JEAN-GUY DESROSIERS**

[b.1934] Canadian biography and another example in *Guide Vallee, III Edition*, by F. Vallee, pg. 417, pub. Le Guide Vallee, 1992

- 59** UNE BLANCHE CHEZ TROIS ROUGES  
oil on pressboard  
10 x 31.75 in. / 25 x 81 cm.  
signed lower right; titled verso  
ESTIMATE: 600/800

- 60** FLEURAJOIES  
oil on pressboard  
6 x 8 in. / 15 x 20 cm.  
signed lower right; titled verso  
ESTIMATE: 250/300

**JAMES DICHMONT**

A.S.A.

[1875-19?] Canadian included in *Jubilee Exhibition of Alberta Paintings*, by J. Nicoll, Calgary Allied Art Centre, 1955 — charter member of the A.S.A., taught at the Banff School of Fine Art from 1946-48; W.J. Phillips mentions James Dichmont as a member of the C.S.P.W.C. in *Phillips in Print*, pg. 81, *The Winnipeg Evening Tribune*, 1933

- 61** UNTITLED — MOUNTAIN VILLAGE  
watercolour on paper  
12.5 x 15 in. / 32 x 38 cm.  
signed lower right; unfinished sketch verso;  
some acid burns  
Prov: private collection, Calgary  
ESTIMATE: 400/600

**ALBRECHT DURER**

[1471-1528] German  
included in *Dictionnaire des Peintres, Sculpteurs et Graveurs*, by E.Benezit, Vol.4, pg.38; *Albrecht Durer — A Biography*, by J.Hutchison, Princeton University Press, 1990

**6** NEMESIS [THE GREAT FORTUNE]

etching on paper  
13 x 9 in. / 33 x 23 cm.  
signed with monogram in plate lower right;  
19th century re-strike  
Ref: *Bartsch #77*; illustrated in *The Illustrated Bartsch*, Vol.10, pg.172-174, ed.R.Koch, Abaris Books, N.Y., 1980  
Prov: private collection, Victoria  
ESTIMATE: 400/600

**6** COAT OF ARMS OF DEATH

etching on paper  
8.5 x 6 in. / 22 x 15 cm. Dated: 1503  
signed with monogram and date in plate lower right;  
19th century re-strike  
Ref: *Bartsch 101*; illustrated in *The Illustrated Bartsch*, Vol.10, pg.224, ed.R.Koch, Abaris Books, N.Y., 1980  
Prov: private collection, Victoria  
ESTIMATE: 400/600

**CHARLES H. EASTLAKE**

19th century British  
possibly the husband of Canadian artist Mary A. Eastlake [1864-1951]

**6** UNTITLED — HARVESTING

watercolour on paper  
9.5 x 13.5 in. / 24 x 34 cm.  
signed lower left; laid down on paper board  
ESTIMATE: 800/1,000

**RANDY FEHR**

[b.1948] Canadian  
listed in *Artists in Canada — Union List*, by N.G.C. Library, pg.223

**6** UNTITLED — TWO FEATHERS

watercolour on paper  
12 x 7 in. / 30 x 18 cm. Dated: 1982  
signed and dated lower right  
Prov: private collection, Calgary;  
LaFlamme Galleries, Calgary, stamp verso  
ESTIMATE: 500/700

**ORVILLE NORMAN FISHER**

[b.1911] Canadian  
biography and other examples in *Vancouver: Art and Artists 1931-1983*, by V.A.G., pg.407 and *Printmaking in British Columbia 1889-1983*, by N.Tuele, A.G.G.V.; exhibition list in *M.M.F.A.*, by E.McMann, pg.126; biography in *Dict. of Canadian Artists — Vol.1*, by C.MacDonald, pg.210

**6** UNTITLED — MOUNTAIN PEAK

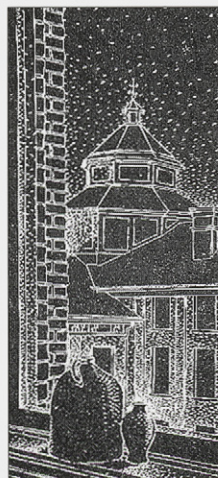
pastel on coloured paper  
19 x 23.25 in. / 48 x 59 cm. Dated: 1961  
signed and dated lower left; dry mounted to paper board  
ESTIMATE: 900/1,200

**LIONEL LEMOINE FITZGERALD**

C.G.P., M.S.A.  
[1890-1956] Canadian  
see *Lionel LeMoine FitzGerald — the Development of an Artist*, by P.Bovey and A.Davis, Winnipeg Art Gallery, 1978; *FitzGerald as Printmaker*, by H.Coy, U. of Man. Press, 1982; *N.G.C. Vol.1, A-F*, ed.C.Hill, pg.328; *A.G.O.*, by the A.G.O., pg.111; exhibition list *R.C.A.A.*, by E.McMann, pg.125; first exhibited with the Group of Seven in 1930; *Robson*, pg.185; *Colgate*, pg.179

**6** VIEW FROM WINDOW WITH TWO JUGS

linoblock on paper  
7.5 x 3.25 in. / 19 x 8 cm. Dated: 1942  
10.25 x 4 in. / 26 x 10 cm. — Paper Size bears date '1942' in ink in margin;  
archival mat front and back; unframed  
Ref: *Coy #87*; print in the collection of the N.G.C., W.A.G. and the Glenbow Museum, Calgary  
Prov: ex-collection Irene Heywood  
ESTIMATE: 500/700



**LLOYD FITZGERALD**

[b.1941] Canadian  
New Brunswick artist and has exhibited with  
Dominion Gallery, Montreal

- 68** NORTHEASTER  
mixed media on paper  
18 x 23 in. / 46 x 58 cm. Dated: 1977  
signed and dated lower left; archival mat  
Prov: corporate collection, Calgary;  
Dominion Gallery, Montreal, label verso  
ESTIMATE: 750/1,000

**CLAUDE FLIGHT**

[1881-1955] British  
see *Linocuts of the Machine Age, Claude Flight and the Grosvenor School*, by S.Coppel, Scolar Press in association with the National Gallery of Australia, 1995 for the important influence of this artist

- 69** VILLAGE IN THE JURA MOUNTAINS  
watercolour on paper  
13.5 x 19 in. / 34 x 48 cm.  
signed lower left; signed and titled verso;  
sketch verso; archival mat  
Ref: in *Linocuts of the Machine Age*, S.Coppel, pg.11,  
the author talks of Flight's living in a cave at Chantemesle  
which overlooked the Seine River in the 1920's,  
see also photograph of artist, pg.21  
Prov: by descent to member of the family;  
Redfern Gallery, London, label verso  
ESTIMATE: 900/1,200

- 70** LE LOURDEL  
watercolour on paper  
13.5 x 19 in. / 34 x 48 cm.  
signed lower left; signed and titled verso; archival mat  
Prov: by descent to member of the family;  
Redfern Gallery, London, label verso  
ESTIMATE: 900/1,200

**JOHN COLIN FORBES**

O.S.A., R.C.A.  
[1846-1925] Canadian  
biography and other examples in *N.G.C. Vol. A-F*, ed.C.Hill, pg.373; biography in *E.P.E.C.*, by R.Harper, pg.114; exhibition list in *R.C.A.A.*, by E.McMann, pg.127; *M.M.F.A.*, by E.McMann, pg.128; travelled with O'Brien to the Rockies in 1886

- 71** ON THE OTTAWA RIVER  
oil on panel  
8.25 x 11.75 in. / 21 x 30 cm.  
signed with initials lower right  
ESTIMATE: 700/900

**MARC-AURELE DE FOY FORTIN**

A.R.C.A.  
[1888-1970] Canadian  
biography and other examples in *N.G.C., Vol.III*, by R.Hubbard, pg.87 and *A.G.O.*, by the A.G.O., pg.117; *Painters of Quebec*, by M.Barbeau, pg.10, Ryerson Press, 1945; *Peindre Montreal 1915-1930*, by L.Lacroix, Musee de Quebec, 1996; exhibition list in *R.C.A.A.*, by E.McMann, pg.130 and *M.M.F.A.*, by E.McMann, pg.129; biography in *Dict. of Canadian Artists — Vol.1*, by C.MacDonald, pg.223

- 72** UNTITLED — THE HOMESTEAD  
oil on wood panel  
5 x 9.75 in. / 13 x 25 cm. Dated: 1930  
signed and dated verso  
Ref: see other examples in *Peindre a Montreal 1915-1930*, by L.Lacroix, Galerie de l'UOAM, Musee du Quebec, currently on display at the Nickle Arts Museum, Calgary  
Prov: Kastel Gallery, Montreal, stamp verso  
ESTIMATE: 3,500/4,500

**LORENZO FRACCHETTI**

[b.1948] Canadian  
**73** UNTITLED — POLAR BEAR  
acrylic on canvas  
16 x 20 in. / 41 x 51 cm. Dated: 1982  
signed and dated lower right  
Prov: corporate collection, Calgary  
ESTIMATE: 700/900

**ALBERT JACQUES FRANCK**

C.S.G.A., C.S.P.W.C., O.S.A., A.R.C.A.  
[1899-1973] Canadian  
see *A.G.O.*, by the A.G.O., pg.124; exhibition list in *R.C.A.A.*, by E.McMann, pg.136

- 74** STILL LIFE  
oil on panel  
4.75 x 6 in. / 12 x 15 cm.  
signed lower left; bears title on plaque  
ESTIMATE: 600/800

**RICHARD FREEMAN**

F.C.A.

[1932-1991] Canadian

see *Visual Arts Newsletter*, Vol.13, No.4, Dec. 1991, pg.14 for biography; see *Shell Canada Collection*, by B.Shammas, pg.17, Shell Canada, Calgary, 1977; see *Artists of British Columbia*, by B.Morys-Edge, pg.45, Chartwell Pub., 1986 for artist's statement and another example

- 75** UNTITLED — MOUNTAIN STREAM  
oil on canvas board  
24 x 29.75 in. / 61 x 76 cm. Dated: 1966  
signed and dated lower right  
Prov: private collection, Calgary  
ESTIMATE: 2,000/2,500

**PIERRE GAUVREAU**

[b.1922] Canadian

exhibition list in *M.M.F.A.*, by E.McMann, pg.142; biography and another example in *La Collection, Tableau Inaugural*, by P.Gagnon, pg.77, Musee d'art contemporain de Montreal, 1992; *Pierre Gauvreau: The First Decade*, by K.Wilkin, E.A.G., 1981

- 76** COMPOSITION — PRE LUMINAIRES IV  
oil on canvas board  
12 x 9 in. / 30 x 23 cm. Dated: 1978  
signed and dated lower left  
ESTIMATE: 1,800/2,400

**ROBERT GENN**

[b.1936] Canadian

see *Robert Genn: In Praise of Painting*, by R.Genn, Merritt Publishing, 1981; biography in *Dict. of Canadian Artists — Vol.2*, by C.MacDonald, addendum; see *Shell Canada Collection*, by B.Shammas, pg.18, Shell Canada, Calgary, 1977

- 77** GAY PATTERN WITH RED  
acrylic on canvas  
20 x 24 in. / 51 x 61 cm.  
signed lower right; signed and titled verso  
Prov: private collection, New Brunswick  
ESTIMATE: 1,200/1,500

**LEONARD [LEN] GIBBS**

[b.1929] Canadian

see *Shell Canada Collection*, by B.Shammas, pg.18, Shell Canada, Calgary, 1977

- 78** PRELIMINARY STUDY FOR SHELLING PEAS  
acrylic on paper  
8.5 x 5.75 in. / 22 x 15 cm. Dated: 1987  
signed lower right; bears title on backing; archival mat  
Prov: private collection, Calgary  
ESTIMATE: 500/600

- 79** FETCHING POTATOES  
watercolour on paper  
14 x 11.5 in. / 36 x 29 cm.  
signed lower right; framed in an oval  
Prov: corporate collection, Calgary  
ESTIMATE: 500/600

**ROLAND GISSING**

A.S.A.

[1895-1967] Canadian

see *Roland Gissing, The People's Painter*, by M.Foran, University of Calgary Press, 1988 for many examples of the artists work; *Dict. of Canadian Artists — Vol.2*, by C.MacDonald, pg.278 for biography; included in *The Alberta Society of Artists: Sixty Years*, by M.Joslin, E.A.G., 1992; *Colgate*, pg.184

- 80** UNTITLED — HARVEST SCENE, SOUTHERN ALBERTA  
oil on canvas  
22 x 30 in. / 56 x 76 cm.  
signed lower right; partial artist's label verso;  
couple of minor surface scratches  
Prov: private collection, Los Angeles  
ESTIMATE: 2,500/3,000

- 81** CLOUD SHADOWS  
oil on canvas  
18 x 24 in. / 46 x 61 cm.  
signed lower right; titled on stretcher verso;  
some surface dirt  
Prov: private collection, Swift Current, Sask.  
ESTIMATE: 1,500/2,000

- 82** NEAR LOST RIVER  
oil on paper board  
12 x 15.75 in. / 30 x 40 cm. Dated: 1963  
signed with estate stamped signature verso;  
bears title and date and signature of 'Ester Gissing'  
as well as certificate of authenticity  
ESTIMATE: 900/1,200

**HENRY GEORGE GLYDE**

A.S.A., C.S.G.A., F.C.A., R.C.A.

[b.1906] Canadian

see *A Lifelong Journey, The Art and Teaching of H.G. Glyde*, by P.Ainslie, Glenbow Museum, 1987; *N.G.C. Vol.2, G-K*, ed.C.Hill, pg.35; *Founders of the A.C.A.*, by V.Greenfield, pg.82; *Dict. of Canadian Artists — Vol.2*, by C.MacDonald, pg.283 for biography

**8**  
**3**  


**SILHOUETTES, ALBERTA**

watercolour on paper

11 x 14.75 in. / 28 x 37 cm. Dated: 1987

signed lower right; archival mat

Prov: Masters Gallery, Calgary, label verso

ESTIMATE: 800/1,000

**8**  
**4**

**NEAR HENFIELD, SUSSEX**

watercolour on paper

12 x 14.25 in. / 30 x 36 cm. Dated: 1982

signed and dated lower right;

signed, titled and dated verso; archival mat

Prov: private collection, Calgary

ESTIMATE: 800/1,000

**8**  
**5**

**CENTRAL SAANICH, B.C.**

watercolour on paper

11.25 x 14.5 in. / 29 x 37 cm.

signed lower right; archival mat

Prov: Masters Gallery, Calgary, label verso

ESTIMATE: 800/1,000

**TED GODWIN**

R.C.A.

[b.1933] Canadian

see *Lower Bow, A Celebration of Wilderness, Art and Fishing*, by T.Godwin, published in conjunction with MacKenzie Art Gallery exhibition, 1991; *N.G.C. Vol.2, G-K*, ed.C.Hill, pg.37; *Founders of the A.C.A.*, by V.Greenfield, pg.83 for biography and another example of the artist's work pg.52

**8**  
**6**  


**BEAVER POND, KANANASKIS**

oil on panel

18 x 24 in. / 46 x 61 cm.

signed and titled verso

Prov: corporate collection, Calgary

ESTIMATE: 1,200/1,500

**BETTY ROODISH GOODWIN**

[b.1923] Canadian

biography and another example in *Musee d'Art Contemporain de Montreal*, pg. 388 and *By a Lady, Celebrating Three Centuries of Art by Canadian Women*, by M.Tippett, pg.185, Viking, 1992; exhibition list in *R.C.A.A.*, by E.McMann, pg.151

**8**  
**7**

**UNTITLED — STILL LIFE**

oil on canvas board

18 x 13.75 in. / 46 x 35 cm. Dated: ca. 1957

signed lower left

ESTIMATE: 1,200/1,500

**COLIN D. GRAHAM**

R.C.A.

[b.1915] Canadian

see *Art in Victoria 1960/1986*, by N.Tuele, A.G.G.V. for biography and another example of the artist's work

**8**  
**8**

**RED SAIL**

acrylic on canvas

18 x 24 in. / 46 x 61 cm. Dated: 1995

signed and dated lower left; signed, titled and dated verso

ESTIMATE: 800/1,000

**ORESTES [RICK] DE GRANDMAISON**

[1932-1985] Canadian

see *Spaces and Places — Eight Decades of Landscape Painting in Alberta*, by J.Ironside, pg.122 and *Dict. of Canadian Artists — Vol.2*, by C.MacDonald, pg.306 for biography; see *Shell Canada Collection*, by B.Shammas, pg.20, Shell Canada, Calgary, 1977

**8**  
**9**

**PRAIRIE MOTION #2**

oil on masonite

14 x 17.75 in. / 36 x 45 cm. Dated: 1977

signed lower left; signed, titled and dated verso

ESTIMATE: 700/900

**SYLVIA HAHN**

O.S.A.

[b.1911] Canadian

see *Images of the Land, 1919-1945*, by P.Ainslie, pg.55; *The White Line — Wood Engraving in Canada since 1945*, by G.Brender a Brandis, pg.79, Porcupine's Quill, 1990; *Dict. of Canadian Artists — Vol.2*, by C.MacDonald, pg.342 for biography

- 9** UNTITLED — PORTRAIT OF A YOUNG GIRL  
oil on canvas  
19.75 x 16 in. / 50 x 41 cm. Dated: 1943  
signed and dated lower right  
ESTIMATE: 750/1,000

**FREDERICK STANLEY HAINES**

C.P.E., C.S.P.W.C., O.S.A., R.C.A.

[1879-1960] Canadian

see *N.G.C. Catalogue: Painting and Sculpture Vol: III Canadian School*, by R.Hubbard, pg.107; *R.C.A.A.*, by E.McMann, pg.166 and *Society of Canadian Painter-Etchers and Engravers in Retrospect*, by A.Oko, pg.75 for biography and other examples

- 9** UNTITLED — ONTARIO SUMMER  
oil on canvas  
20 x 24 in. / 51 x 61 cm.  
signed lower right; bears inscription 'No.53'  
on stretcher verso  
ESTIMATE: 1,200/1,500

- 9** NEAR AVENING  
oil on masonite  
10 x 11.75 in. / 25 x 30 cm. Dated: 1959  
signed lower right; titled, dated and inscribed  
'N.F.S.' on artist's label verso; minor touch-up noted  
ESTIMATE: 600/800

**WILLIAM NOBLE HARDWICK**

[1805-1865] British

biography in *Benezit*, Vol.5, pg.402

- 9** UNTITLED — ENGLISH PASTORAL  
watercolour on paper  
14.5 x 10.75 in. / 37 x 27 cm. Dated: 1833  
signed and dated lower right; laid down on paper board  
Prov: private collection, Edmonton  
ESTIMATE: 500/700

**9**  
**4** NO LOT

**TED HARRISON**

[b.1926] Canadian

biography and another example in *The Yukon Permanent Art Collection*, by the Friends of the Gallery, pg.10, Yukon Tourism; *Dict. of Canadian Artists — Vol.2*, by C.MacDonald, addendum for biography

**LAKESIDE SUN**

acrylic on canvas board

23.75 x 35.75 in. / 60 x 91 cm. Dated: 1979

signed lower right; signed, titled and dated on label verso

Prov: corporate collection, Calgary

ESTIMATE: 2,000/3,000

**RANDOLPH STANLEY HEWTON**

C.G.P., R.C.A.

[1888-1960] Canadian

biography and other examples in *N.G.C. Vol.2, G-K*, ed.C.Hill, pg.126; *A.G.O.*, by the A.G.O., pg.173; exhibition list in *R.C.A.A.*, by E.McMann, pg.186; *M.M.F.A.*, by E.McMann, pg.174

- 9** UNTITLED — TWO NUDES  
oil on canvas  
28 x 16 in. / 71 x 41 cm.

unsigned; some touch up noted

Ref: see similar subject and style in *The McMichael**Conservation Collection*, by P.Duval,

'Apres-Midi Camaret', 1913

Prov: C.R. Crowley Artist Materials, Montreal, stamp verso

ESTIMATE: 1,200/1,500



**EDWIN HEADLEY HOLGATE**

C.G.P., C.S.G.A., R.C.A.

[1892-1977] Canadian

see *Edwin H. Holgate*, by D.Reid, N.G.C., 1976 and *The Prints of Edwin Holgate*, by I.Thom, McMichael Canadian Art Collection, 1989 for catalogue raisonne of the artist's prints; biography and other examples in *N.G.C. Vol.2, G-K*, ed.C.Hill, pg.133

97

**UNTITLED — THE LUMBERJACK**

charcoal on paper

26 x 19.5 in. / 66 x 50 cm.

signed with initials lower left; small paint drip right centre; archival mat front and back  
Ref: illustrated in *Group of Seven Drawings*, by P.Duval, plate 56, Burns and MacEachern, Toronto, 1965 [in the collection of the artist as of this date]; obviously a mirror image for the woodcut, this would appear to be a study for *Lumberjacks* cat. #29 in *The Prints of Edwin Holgate*, by I.Thom who mentions this drawing as having an unknown location in 1990  
ESTIMATE: 3,000/4,000

**EDWARD JOHN HUGHES**

R.C.A.

[b.1913] Canadian

see *E.J. Hughes 1931-1982. A Retrospective Exhibition*, by J.Young, Surrey Art Gallery, 1983; *Dict. of Canadian Artists — Vol.2*, by C.MacDonald, pg.481 for biography; *R.C.A.A.*, by E.McMann, pg.198

98

**CENTRE STREET BRIDGE, CALGARY**

graphite on paper

10.5 x 14.5 in. / 27 x 37 cm. Dated: 1956

signed lower right; written colour notations; bears title and date on paper backing

Ref: preliminary pencil study for a watercolour of the same subject now in the collection of the Glenbow Museum, illustrated in *The Urban Prairie*, by D.Ring, pg.135, Mendel Art Gallery, 1993  
Prov: Dominion Gallery, Montreal, label verso  
ESTIMATE: 2,300/3,000

99

**GATE OF FORT GARRY, WINNIPEG, 1956**

graphite on paper

9.5 x 13.5 in. / 24 x 34 cm. Dated: 1956

signed lower right; written colour notations; bears title and date on paper backing

ESTIMATE: 2,500/3,000

**JOSEPH JULIUS HUMME**

O.S.A.

[1825-1889] Canadian

biography in *E.P.E.C.*, by R.Harper, pg.166; *Captain Julius Humme: Muskoka Artist and Photographer*, by G.French, East Georgian Bay Historical Journal, 1, 1981

100

**UNTITLED — IN THE COUNTRYSIDE**

watercolour on paper

6.5 x 9.5 in. / 17 x 24 cm.

signed lower right; old backing with writing verso  
ESTIMATE: 300/400

**ROBERT NEWTON HURLEY**

[1894-1980] Canadian

see *Robert Newton Hurley, A Notebook*, by G.Moppett, Mendel Art Gallery, 1986; *Sky Painter; the Story of Robert Newton Hurley* by J.Swanson, Western Producer Book Service, 1973; *Dict. of Canadian Artists — Vol.2*, by C.MacDonald, pg.493 for biography  
*Biographical Dict. of Saskatchewan Artists — Men*, by M.Newman, pg.123

101

**UNTITLED — PRAIRIE WINTER**

watercolour on paper board

10.25 x 15 in. / 26 x 38 cm. Dated: 1964

signed and dated lower right; archival mat  
ESTIMATE: 400/600

102

**UNTITLED — PRAIRIE WINTER WITH TELEPHONE POLES**

watercolour on paper board

10.5 x 15 in. / 27 x 38 cm. Dated: 1964

signed and dated lower left; archival mat  
ESTIMATE: 400/600

103

**UNTITLED — PRAIRIE FARM, WINTER SUNSET**

watercolour on paper board

6.25 x 10.25 in. / 16 x 26 cm. Dated: 1951

signed and dated lower right

Prov: private estate, Ottawa;  
Clay's Pictures, Regina, label verso

ESTIMATE: 400/600



104

**UNTITLED — SPRING VIEW**

watercolour on paper

5.5 x 9 in. / 14 x 23 cm.

signed lower left; some yellowing

Prov: Arlington Art Shop, Saskatoon, label verso  
ESTIMATE: 300/500

**JOSEF ISRAELS**

[1824-1911] Dutch  
included in *Dictionnaire des Peintres, Sculpteurs et Graveurs*, by E.Benezit, Vol.5, pg.738; see *Dutch Painters of the 19th Century*, by H.Marius, pg.129, Antique Collector's Club, 1973; included in *The Hague School, Collecting in Canada at the Turn of the Century*, by M.Hurdalek, pg.33, A.G.O., 1983

**105** UNTITLED — OLD WOMAN IN THE DUNES  
ink and watercolour on paper  
11.25 x 8.75 in. / 29 x 22 cm.  
signed lower left  
ESTIMATE: 2,000/3,000

**ALEXANDER YOUNG JACKSON**

C.G.P., O.S.A., R.C.A.  
[1882-1974] Canadian  
see *A Painter's Country — the Autobiography of A.Y.Jackson*, Clarke, Irwin & Company, 1958; *A.Y. Jackson Paintings 1902-1953*, by A.Lismer, A.G.O., 1953; biography and other examples in *N.G.C. Vol.2, G-K*, ed.C.Hill, pg.177; *A.G.O.*, by the A.G.O., pg.205; *R.C.A.A.*, by E.McMann, pg.204

**106** PINCHER CREEK, ALTA. '45  
oil on panel  
10.5 x 13.5 in. / 27 x 34 cm. Dated: 1945  
signed right; signed, titled and dated verso  
Ref: exhibition label verso with title 'Farm at Pincher Creek' verso; in 1945 the artist taught at the Banff School of Fine Arts in the summer before going to northern B.C. and then was in Pincher Creek and Millarville in the fall; his brother Ernest, lived in Lethbridge  
Prov: Alex Fraser Galleries, Vancouver, label verso  
ESTIMATE: 8,000/10,000

**OTTO REINHOLD JACOBI**

O.S.A., R.C.A.  
[1812-1901] Canadian  
see *A.G.O.*, by the A.G.O., pg.213; *N.G.C. Vol.III*, by R.Hubbard, pg.146; *E.P.E.C.*, by R.Harper, pg.171; *Dict. of Canadian Artists — Vol.3*, by C.MacDonald, pg.535 for biography; exhibition list in *M.M.F.A.*, by E.McMann, pg.190

**107** UNTITLED — RAPIDS WITH MOUNTAINS IN THE DISTANCE  
watercolour on paper  
5 x 9.25 in. / 13 x 23 cm. Dated: 1874  
signed and dated lower right  
ESTIMATE: 600/800

**GEORGIA JARVIS**

[1944-1990] Canadian

**108** FALL, HALLIBURTON  
oil on canvas board  
12 x 16 in. / 30 x 41 cm.  
signed lower right; titled verso  
ESTIMATE: 900/1,200

**FRANCIS [FRANZ] HANS JOHNSTON**

C.S.P.W.C., O.S.A., R.C.A.  
[1888-1949] Canadian  
biography and other examples in *N.G.C. Vol.2, G-K*, ed.C.Hill, pg.347; *A.G.O.*, by the A.G.O., pg.222; *R.C.A.A.*, by E.McMann, pg.212; *Dict. of Canadian Artists — Vol.3*, by C.MacDonald, pg.566 for biography

**109** UNTITLED — WINTER ALGOMA WOODS  
tempera on paper  
2.25 x 2.25 in. / 6 x 6 cm. Dated: ca. 1918  
signed with initials lower left  
ESTIMATE: 600/800

**MINNIE KALLMEYER**

O.S.A.  
[1882-1947] Canadian  
biography and another example in *N.G.C. Vol.III*, by R.Hubbard, pg.151; *Dict. of Canadian Artists — Vol.3*, by C.MacDonald, pg.596; exhibition list in *R.C.A.A.*, by E.McMann, pg.216

**110** AUTUMN, KINGSMERE  
oil on board  
12 x 10 in. / 30 x 25 cm. Dated: 1928  
signed lower right; signed and titled on label verso  
Ref: exhibited at Ontario Society of Artists, 1928, label verso  
ESTIMATE: 700/900

**JOHN KASYN**

C.S.P.W.C., O.S.A.  
[b.1926] Canadian

**111** LANE NEAR DANFORTH AVENUE  
oil on masonite  
7.5 x 12 in. / 19 x 30 cm.  
signed lower right; signed and titled verso  
ESTIMATE: 1,400/1,800

**112** ON A STREET IN CABBAGETOWN, TORONTO  
watercolour on paper  
5.25 x 7 in. / 13 x 18 cm.  
signed lower right; titled on artist's label verso  
Prov: corporate collection, Calgary  
ESTIMATE: 300/400

**AUGUSTUS FREDERICK LAFOSSE KENDERDINE**

[1870-1947] Canadian  
see *Augustus Kenderdine*, by M.Spain, Glenbow Museum, 1986; *Gus Kenderdine 1870-1947, Pioneer*, by J.Climer, Mendel Art Gallery; the Emma Lake workshop is held on land given by Kenderdine; *Dict. of Canadian Artists — Vol.3*, by C.MacDonald, pg.623; *Biographical Dict. of Saskatchewan Artists — Men*, by M.Newman, pg.133; *N.G.C. Vol.2, G-K*, ed.C.Hill, pg.364



- 113** UNTITLED — CLOUDY DAY  
graphite on paper  
4.5 x 7.5 in. / 11 x 19 cm.  
signed lower right; laid down on paper board  
Prov: Clay's Art and Gift Shop, Regina, label verso  
ESTIMATE: 400/600

**ESTELLE MURIEL KERR**

O.S.A.

[1879-1971] Canadian  
biography in *Dict. of Canadian Artists — Vol.3*,  
by C.MacDonald, pg.632; exhibition list in  
*R.C.A.A.*, by E.McMann, pg.220

- 114** UNTITLED — FARM COUPLE HAYING  
oil on panel  
10.25 x 13.5 in. / 26 x 34 cm. Dated: 1901  
signed and dated lower left  
ESTIMATE: 1,500/2,000

**ILLINGWORTH HOLEY KERR**

A.S.A., R.C.A.

[1905-1988] Canadian  
see *Harvest of the Spirit*, by M.Callahan, E.A.G.,  
1985 and *Paint and Circumstance*, by I.Kerr,  
Calgary, 1987; *N.G.C. Vol.2 G-K*, ed.C.Hill,  
pg.368; *Founders of the A.C.A.*, by V.Greenfield,  
pg.87; *Dict. of Canadian Artists — Vol.3*, by  
C.MacDonald, pg.633; *Biographical Dict. of  
Saskatchewan Artists — Men*, by M.Newman,  
pg.137

- 115** FIREWEED GONE TO POD, GOLDENROD AND YARROW  
oil on canvas board  
18 x 24 in. / 46 x 61 cm. Dated: 1980  
signed with monogram lower left;  
signed, titled and dated verso  
Prov: corporate collection, Calgary  
ESTIMATE: 1,500/2,000

- 116** BEAVER POND, UPPER HIGHWOOD  
oil on canvas board  
11.75 x 15.75 in. / 30 x 40 cm. Dated: 1985  
signed with monogram lower right;  
signed, titled and dated verso  
Prov: purchased from the artist; private collection, Calgary  
ESTIMATE: 1,200/1,500

- 117** WINDY RIDGE  
watercolour on paper  
14 x 21.5 in. / 36 x 55 cm. Dated: ca. 1962  
signed with monogram lower left; archival mat  
Prov: Masters Gallery, Calgary, label verso  
ESTIMATE: 1,000/1,200

**ROSEMARY ELIZABETH KILBOURN**

R.C.A.

[b.1931] Canadian  
biography and other examples in *The White  
Line — Wood Engraving in Canada since 1945*,  
by G.Brender a Brandis, pg.86, Porcupine's  
Quill, 1990; *Dict. of Canadian Artists — Vol.3*,  
by C.MacDonald, pg.639 for biography

- 118** FIRST NIGHT IN MARCH 2 #14/20  
wood engraving on paper  
12.75 x 17 in. / 32 x 43 cm.  
signed, titled and numbered along bottom; archival mat  
ESTIMATE: 350/450



- 119** ICARUS 2 #12/30  
wood engraving on paper  
13 x 10.25 in. / 33 x 26 cm.  
signed, titled and numbered along bottom; archival mat  
ESTIMATE: 300/400

**LOUISE LECOR KIROUAC**

[b.1939] Canadian

biography in *Guide Vallee, III Edition*, by  
F.Vallee, pg.635, pub. Le Guide Vallee, 1992

- 120** NOTRE DAME DES MONTS — CHARLEVOIX QUE.  
acrylic on canvas  
24 x 30 in. / 61 x 76 cm.  
signed lower right; signed and titled verso  
ESTIMATE: 1,200/1,400

**DOROTHY KNOWLES**

[b.1927] Canadian

see *Dorothy Knowles Paintings 1964-1982*, by T.Fenton, E.A.G. and biography in *Biographical Dict. of Saskatchewan Artists — Women*, by M.Newman, pg.100, Fifth House Publishing; included in *Selected View: The Longstaffe Collection 1959-1984*, by L.Farrell-Ward, V.A.G., pg.75

1  
2  
1**BRIDGE UNDER MIST**

oil on masonite

16 x 25.5 in. / 41 x 65 cm. Dated: 1959

signed 'Dorothy Pehudoff' and dated lower right; bears title and number '279' verso

Ref: the artist married William Pehudoff in 1951 and used her married name until at least 1956; sometime thereafter she went back to using her maiden name; see *The Flat Side of the Landscape*, by J.O'Brian, pg.77, cat.#77 for another example from this time period and signed 'Pehudoff'

Prov: private collection, Saskatoon

ESTIMATE: 1,800/2,200

**KATHE KOLLWITZ**

[1866-1945] German

the standard reference for this artist is *Kathe Kollwitz, Verzeichnis des graphischen Werkes*, by A.Klipstein, Bern, 1955

1  
2  
2**ZERTRETENE**

etching on paper

9 x 7.5 in. / 23 x 19 cm. Dated: 1900

unsigned

Ref: Klipstein #48\_\_\_; original plate was substantially longer and this the left side was trimmed off and printed separately

Prov: private collection, Calgary

ESTIMATE: 500/700

**ZBIGNIEW STANLEY KUPCZYNSKI**

[b.1928] Canadian

1  
2  
3**ACCORDION**

mixed media on velour paper

23.75 x 19.75 in. / 60 x 50 cm. Dated: 1980

signed and dated centre

Prov: West End Gallery, Edmonton, label verso

ESTIMATE: 700/900

**RAJKA KUPESIC**

[b.1952] Canadian

biography and another example in *Guide Vallee, III Edition*, by F.Vallee, pg.639

1  
2  
4**ADAGIO**

oil pastel on paper

8 x 6 in. / 20 x 15 cm.

signed lower centre; signed and titled

on artist's label verso

Prov: Collector's Gallery, Calgary, label verso

ESTIMATE: 600/700

**GILLES LABRANCHE**

[b.1947] Canadian

biography and another example in *Guide Vallee, III Edition*, by F.Vallee, pg.647, pub. Le Guide Vallee, 1992

1  
2  
5**LES PASSAGER EN PARTANER POUR?**

acrylic on canvas

30 x 23.75 in. / 76 x 60 cm. Dated: 1996

signed lower right; signed, titled and dated verso

ESTIMATE: 1,400/1,600

**WILLIAM [BILL] JOHN HOUSTON LAING**

[b.1944] Canadian

biography and another example in *Artists of Alberta*, by S.Baker, pg.54, University of Alberta Press, 1980; see *William Laing, A Journey*, by A.Davis, Nickle Arts Museum, Calgary, 1997, exhibition held at the Nickle February through April, 1997

1  
2  
6**NIGHT LIGHTS #7 #A.P.**

etching on paper

6.25 x 34.5 in. / 16 x 88 cm.

signed, titled and numbered along bottom

Prov: corporate collection, Calgary


Ref: included in *William Laing, A Journey*, exhibition, cat.#68 in an edition of 25

ESTIMATE: 250/350

**CLAUDE LANGEVIN**

[b.1942] Canadian

see *Dict. of Canadian Artists — Vol.3*, by C.MacDonald, pg.730 for biography; *Guide Vallee, III Edition*, by F.Vallee, pg.678, pub. Le Guide Vallee, 1992

**1**  
**2**  
**7**  
 BOURASQUES DE VENT  
oil on canvas  
27 x 35 in. / 69 x 89 cm.  
signed lower left; signed and titled verso  
ESTIMATE: 2,250/2,750

**1**  
**2**  
**8**  
RIVIERE DU NORD  
oil on canvas  
20 x 24 in. / 51 x 61 cm.  
signed lower right; signed and titled verso  
ESTIMATE: 1,400/1,800

**1**  
**2**  
**9**  
DANS LA VALLEE  
oil on canvas  
12 x 16 in. / 30 x 41 cm.  
signed lower left; signed and titled verso  
ESTIMATE: 900/1,200

**1**  
**3**  
**0**  
ANCESTRAL VILLAGE  
oil on canvas  
8 x 10 in. / 20 x 25 cm.  
signed lower right; signed and titled verso  
Prov: Masters Gallery, Calgary, label verso  
ESTIMATE: 500/600

**ANDREAS CHRISTIAN  
GOTTFRIED LAPINE**

C.S.P.W.C., O.S.A., A.R.C.A.

[1866-1952] Canadian

see *R.C.A.A.*, by E.McMann, pg.232; *Dict. of Canadian Artists — Vol.3*, by C.MacDonald, pg.740, and exhibition list *M.M.F.A.*, by E.McMann, pg.215

**1**  
**3**  
**1**  
 UNTITLED — SUMMER SUNSET  
oil on board  
13.75 x 10.5 in. / 35 x 27 cm.  
signed lower right  
ESTIMATE: 900/1,200

**GILL W. LAVENGOOD**

20th century N.American

**1**  
**3**  
**2**  
PEACE IN SASKATCHEWAN, AUG. 6,7,8,9, 1927  
oil on panel  
25 x 15.75 in. / 64 x 40 cm. Dated: 1927  
signed, dated and inscribed 'Regina, Saskatchewan,  
Canada' lower right; signed and titled verso  
Prov: D & E Lake Ltd., Toronto, label verso  
ESTIMATE: 1,500/2,000



**GRANT LEIER**

[b.1956] Canadian

see *Artists of British Columbia*, by D.Morys-Edge, pg.71, Chartwell Pub., 1986 for artist's statement and another example

**1**  
**3**  
**3**  
UNTITLED — THE FLAMINGOS  
mixed media on illustration board  
40 x 30 in. / 102 x 76 cm. Dated: 1979  
signed and dated lower right  
Prov: corporate collection, Calgary  
ESTIMATE: 700/900

**ALFRED CROCKER LEIGHTON**

A.S.A., C.S.P.W.C., A.R.C.A., R.B.A.

[1901-1965] Canadian

see *A.C. Leighton*, by L.Render, Glenbow-Alberta Institute, 1971; *A.C. Leighton — A Retrospective Exhibition*, by R.Boulet, E.A.G., 1981; and *A.C. Leighton and the Canadian Rockies*, by T.Fenton, Whyte Museum, 1989; *Dict. of Canadian Artists — Vol.3*, by C.MacDonald, pg.799 for biography; *Robson*, pg.186; *Colgate*, pg.107

134

**UNTITLED — HIGH ALPINE, CANADIAN ROCKIES**

watercolour on paper

8.25 x 10.75 in. / 21 x 27 cm.

signed lower left; archival mat

Ref: see similar composition 'Valley of the Giants, Banff' in *A.C. Leighton and the Canadian Rockies*, by T.Fenton, pg.20 in the collection of the Leighton Foundation

Prov: private collection, Victoria

ESTIMATE: 2,500/3,000

135

**THE WOOD CUTTER, CRESCENT, B.C.**

watercolour on paper

10 x 12.75 in. / 25 x 32 cm.

signed lower left; bears title on mat;

laid down on paper board

Prov: private collection, Calgary;

Gainsborough Galleries, Calgary, label verso

ESTIMATE: 800/1,200

**ROBERT LENARD**

[1879-1936] Hungarian

biography in *Allgemeines Lexikon der Bildenden Künstler*, by H.Vollmer

136

**UNTITLED — FOUNTAIN SCENE**

colour etching on paper

6.5 x 6 in. / 17 x 15 cm.

signed lower left; archival mat

ESTIMATE: 300/500

**MAUDE LEWIS**

[ca.1903-1970] Canadian

biography in *Dict. of Canadian Artists — Vol.3*, by C.MacDonald, pg.837

137

**UNTITLED — TWO HORSES HAULING LOGS**

oil on paper board

12 x 14 in. / 30 x 36 cm. Dated: 1966

signed lower right; signed, dated and inscribed

'Digby, N.S.' verso

Prov: private estate, Saskatchewan

ESTIMATE: 400/600

**ERNEST LINDNER**

C.P.E., C.S.G.A., F.C.A., R.C.A.

[1897-1988] Canadian

see *Ernest Lindner, A Retrospective Exhibition*, by J.Climer, Mendel Art Gallery, 1970; *Uprooted; the Life and Art of Ernest Lindner*, by T.Heath, Fifth House, 1983 as well as *The Mendel Art Gallery — Twenty-Five Years of Collection*, by M.Teitelbaum, Mendel Art Gallery, 1989 and *A.G.O.*, pg.243, A.G.O., 1970; *Biographical Dict. of Saskatchewan Artists — Men*, by M.Newman, pg.150

138

**UNTITLED — HANDS IN FRONT OF FEMALE TORSO**

watercolour on paper

14.5 x 21.5 in. / 37 x 55 cm.

archival mat front and back

Ref: another example in *Ernest Lindner*, by J.Climer, pg.72 titled 'Hand of the Artist'

Prov: private collection, Saskatoon;

Art Placement, Saskatoon, label verso

ESTIMATE: 3,000/4,000



139

**MUTATION**

graphite on paper

28.5 x 22.5 in. / 72 x 57 cm. Dated: 1971

signed and dated lower right; bears title on paper backing

Ref: catalogue #7 in *Drawings 1969-1972, E.Lindner*, by J.Climer, illustrated pg.7 in catalogue

Prov: Saskatoon Gallery and Conservation Corporation, Saskatoon, label verso; private estate, Saskatchewan

ESTIMATE: 2,000/2,500

**ARTHUR LISMER**

C.S.P.W.C., O.S.A., R.C.A.

[1885-1969] Canadian

see *Bright Land — A Warm Look at Arthur Lismer*, by L.Darroch, Merritt Pub., 1981 for an overview of the artist's career as well as the lighter side in *A New Angle on Canadian Art*, by I.Thom, McMichael Canadian Collection, 1985; *Canadian Jungle: The Later Works of Arthur Lismer*, by D.Reid, A.G.O., 1985 and *A.G.O.*, by the A.G.O., pg.244

1  
4  
0**HIGH TIDE, CAPE BRETON COAST**

oil on panel

12 x 16 in. / 30 x 41 cm. Dated: ca. 1952

signed and indistinctly dated lower left;

titled and inscribed '51 or 52' verso

Ref: see *Canadian Jungle: The Later Works of Arthur Lismer*, by D.Reid, pg.83 for similar painting from

this time period in the collection of the

Glenbow Museum [cat.#50]

Prov: private estate, Victoria

ESTIMATE: 5,000/7,000

**[ATTRIBUTED TO] ARTHUR LISMER**1  
4  
1**UNTITLED - RAPIDS IN SUMMER**

oil on masonite

10 x 12 in. / 25 x 30 cm.

ESTIMATE: 1,000/1,200

**FREDERICK NICHOLAS LOVEROFF**

O.S.A., A.R.C.A.

[1894-1959] Canadian

see *The Paintings of Frederick Nicholas Loveroff*, by K.Forrest, MacKenzie Art Gallery, 1981; *N.G.C. Vol.III*, by R.Hubbard, pg.183 and *A.G.O.*, by the A.G.O., pg.261; exhibition list in *R.C.A.A.*, by E.McMann, pg.246; *Biographical Dict. of Saskatchewan Artists — Men*, by M.Newman, pg.158

1  
4  
2**BEFORE SUN DOWN**

oil on panel

8.25 x 10.25 in. / 21 x 26 cm. Dated: 1926

signed lower right; signed and titled verso

Ref: exhibited in the 1925 O.S.A. Small Picture Exhibition,

catalogue #129; partial 1926 Canadian National

Exhibition label verso

ESTIMATE: 2,000/3,000

**SCULPTURE****JEAN-GUY DALLAIRE**

[b.1943] Canadian

the artist was born in Quebec, raised in Alberta and now teaches and lives in Vancouver; he has been profiled on CBC and his biography will be included in the upcoming *Dictionnaire des Auteurs et Artistes francophones de l'Ouest*

1  
4  
3**FAMILLE #11/12**

bronze sculpture

6.75 x 3.25 x 2.25 in. / 17 x 8 x 6 cm. Dated: 1992

signed, dated and numbered on bottom; on stone plinth

ESTIMATE: 600/900

**SOREL ETROG**

A.R.C.A.

[b.1933] Canadian

biography and another example in *A.G.O.*, by the A.G.O., pg.106; exhibition list in *R.C.A.A.*, by E.McMann, pg.118 and *M.M.F.A.*, by E.McMann, pg.117; biography in *Dict. of Canadian Artists — Vol.1*, by C.MacDonald, pg.193

1  
4  
4**THE LOVERS**

bronze sculpture

7.5 x 3 x .5 in. / 19 x 8 x 1 cm.

label under base bears artist's name and title

ESTIMATE: 1,500/2,000

**INUIT****THOMAS AKILAK**

[b.1961] Canadian

biography in *Biographies of Inuit Artists, Vol.1*, by Canadian Arctic Producers

1  
4  
5**MAN**

carving in light grey stone

10 x 9.5 x 6 in. / 25 x 24 x 15 cm. Dated: 1990

unsigned; Baker Lake

Ref: minor tape stain

ESTIMATE: 600/800

**JOANIE IKKIDLUAK**

[b.1945] Canadian

biography in *Biographies of Inuit Artists, Vol.1*, by Canadian Arctic Producers; see *The Jacqui and Morris Shumiatcher Collection of Inuit Art*, Norman Mackenzie Art Gallery, Regina, 1981

1  
4  
6**BEAR**

carving in green stone

22.75 x 14.5 x 15 in. / 58 x 37 x 38 cm. Dated: 1989

bone teeth; signed in syllabics under base; Iqaluit

ESTIMATE: 3,000/3,500

**CAIN IQOARQSAQ**

[b.1944] Canadian  
biography in *Biographies of Inuit Artists, Vol.1*  
by Canadian Arctic Producers

1  
4  
7

**POLAR BEAR AND SEAL**  
carving in light green stone  
12 x 12 x 5.5 in. / 30 x 30 x 14 cm. Dated: 1991  
signed 'Cain' and dated 1991 under base; Igloodik  
ESTIMATE: 1,200/1,500

**MAX KAMIMALIK**

20th century Canadian

1  
4  
8  

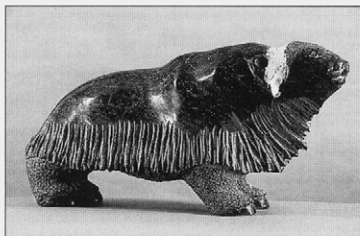

**MAN DRUM DANCING**  
carving in dark grey stone  
15.5 x 7.5 x 8 in. / 39 x 19 x 20 cm. Dated: 1990  
with bone eyes, teeth and drum;  
signed in syllabics under base; Gjoa Haven  
ESTIMATE: 2,000/2,500

**MATOO MOONIE MICHAEL**

[b.1958] Canadian  
biography in *Biographies of Inuit Artists, Vol.1*,  
by Canadian Arctic Producers

1  
4  
9

**MUSKOX**  
carving in green stone  
9.5 x 18 x 6.25 in. / 24 x 46 x 16 cm. Dated: 1990  
bone horns; Lake Harbour  
ESTIMATE: 3,000/3,500

**DONNY PITSIULAK**

[b.1961] Canadian  
20th century Canadian  
biography in *Biographies of Inuit Artists, Vol.2*,  
by Canadian Arctic Producers

1  
5  
0

**BEAR AND MERMAID**  
carving in green/brown stone  
13 x 11.5 x 7 in. / 33 x 29 x 18 cm. Dated: 1990  
signed in syllabics under base; Lake Harbour  
ESTIMATE: 700/900

**ROY LEADBEATER**


A.S.A.  
[b.1928] Canadian  
biography in *Dict. of Canadian Artists — Vol.3*,  
by C.MacDonald, pg.766

1  
5  
1

**HIGH PRIEST #1/7**  
coloured bronze sculpture  
23.5 x 8.5 x 5 in. / 60 x 22 x 13 cm.  
signed and numbered on leg;  
titled on plaque on wooden base  
Prov: corporate collection, Calgary  
ESTIMATE: 700/900

**GORD SMITH**

20th century Canadian

1  
5  
2  


**RECLINING NUDE #1/7**  
bronze sculpture  
17.25 x 11 x 1.25 in. / 44 x 28 x 3 cm.  
numbered and inscribed 'GARP' along bottom;  
on wooden base  
Prov: corporate collection, Calgary  
ESTIMATE: 700/900

**Thank you for attending.**

The second night starting with LOT #201 and continuing through LOT #323 will be auctioned TUESDAY, MAY 6th starting at 7:00 p.m. If you are unable to attend and are interested in one of the lots, please contact our staff regarding leaving an absentee bid.

Clients are reminded that the Next Auction is scheduled for NOVEMBER 3 & 4, 1997. Please contact the office early regarding consignments or if there are particular artists you are looking for.

**SILENT AUCTION, LOT #401 – 492  
SUNDAY MAY 4<sup>TH</sup> AT 4:00 P.M.**

**TUESDAY MAY 6<sup>TH</sup> AT 7:00 P.M.  
LIVE AUCTION, LOT #201 – 323**

**PLEASE NOTE**

*Buyer's Premium: a Premium of 10% will be added to the Hammer Price of all property sold. The Premium is payable by all purchasers. Goods and Services Tax: G.S.T. of 7% will be charged on the total of the Hammer Price and on the Buyer's Premium.*

*Additional notes may be found at the front of the catalogue for prospective buyers.*

**PAUL DUVAL**

20th century Canadian

- 201** THE MCMICHAEL CONSERVATION COLLECTION  
book  
10 x 10.25 in. / 25 x 26 cm. Dated: 1970  
signed by A.J. Casson, A.Y. Jackson and  
Robert McMichael; soft cover  
ESTIMATE: \$150/200

**J. BROOKS JOYNER**

20th century Canadian

- 202** MARION NICOLL R.C.A. #147/200  
book  
10.5 x 12 in. / 27 x 30 cm. Dated: 1979  
signed and numbered; with print 'Self Portrait' – signed  
by artist, titled, dated and numbered along bottom;  
unframed; in portfolio case  
Prov: published by Masters Gallery, Calgary  
ESTIMATE: 150/200

**G. BLAIR LAING**

20th century Canadian

- 203** MEMOIRS OF AN ART DEALER  
book  
10.25 x 7.25 in. / 26 x 18 cm. Dated: 1979  
two volume set; complete with portfolio case  
Prov: published by McClelland Stewart Limited, Toronto  
ESTIMATE: 200/250

**ALEX MOGELON**

20th century Canadian

- 204** MILLER BRITTAIN IN FOCUS  
book  
14.25 x 11.25 in. / 36 x 29 cm. Dated: 1981  
signed by the author; in portfolio case  
Ref: note on back page states the edition  
is limited to 290 copies  
Prov: published by Simon Drednere Publishers Inc.,  
Toronto  
ESTIMATE: 100/150

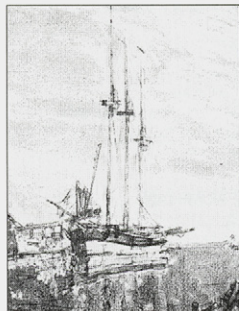
**MANLY EDWARD MACDONALD**

O.S.A., R.C.A.

[1889-1971] Canadian

biography and other examples in *N.G.C. Vol.III*, by R.Hubbard, pg.201; *A.G.O.*, by the A.G.O., pg.285; exhibition list in *R.C.A.A.*, by E.McMann, pg.254

- 205** THE HARBOUR  
hand coloured etching on paper  
8 x 6 in. / 20 x 15 cm.  
10.25 x 8 in. / 26 x 20 cm. – Paper Size  
signed and titled along bottom; unframed  
ESTIMATE: 300/400



**MURRAY WILLIAM MACDONALD**  
A.S.A.

[1898-1991] Canadian

see *The Changing Picture, 65 Years of the Edmonton Art Club*, pg.18 for another example of the artist's work in the collection of the A.A.F. as well as *Dict. of Canadian Artists – Vol.4*, by C.MacDonald, pg.1001 for biography

- 206** UNTITLED – THE RED DOOR  
watercolour on paper  
19.25 x 25.25 in. / 49 x 64 cm.  
signed lower right  
Prov: private collection, Calgary;  
purchased directly from the artist  
ESTIMATE: 300/400

**WILLIAM MALTMAN**

C.S.P.W.C.

[1901-1971] Canadian

biography and another example in *150 Years of Art in Manitoba*, by F.Eckhardt, pg.92; included in *The Winnipeg School of Art*, by M.Baker, pg.105, University of Manitoba, 1984

**207****FISHING BOATS AT ANCHOR, VICTORIA**

watercolour on paper

9.75 x 14 in. / 25 x 36 cm. Dated: ca. 1951

signed with estate stamp lower left; archival mat;

bears title on label verso

Prov: Collector's Gallery, Calgary, label verso

ESTIMATE: 750/1,000

**208****BROOM ON CATTLE POINT, VICTORIA**

watercolour on paper

9.25 x 13.5 in. / 23 x 34 cm. Dated: 1969

signed and dated lower right; titled on paper verso

ESTIMATE: 300/400

**JACK HAROLD MARKELL**

[1919-1979] Canadian

biography and another example in *N.G.C. Vol.III*, by R.Hubbard, pg.208; *Dict. of Canadian Artists — Vol.4*, by C.MacDonald, pg.1110; *R.C.A.A.*, by E.McMann, pg.269

**209****FLORAL BROWN**

oil on paper board

12 x 9 in. / 30 x 23 cm.

signed lower left; bears title on label verso

Prov: private collection, Calgary

ESTIMATE: 300/400

**JOHN [JACK] MARTIN**

C.S.P.W.C., R.C.A.

[1904-1965] Canadian

exhibition list in *R.C.A.A.*, by E.McMann, pg.271; see *A Dict. of Canadian Artists - Vol.4*, by C.MacDonald, pg.1127 for biography

**210****HOUSE IN GODERICH, STRATFORD**

oil on board

10 x 12 in. / 25 x 30 cm.

signed lower right; signed and titled verso

ESTIMATE: 700/900

**THOMAS MOWER MARTIN**

O.S.A., R.C.A.

[1838-1934] Canadian

see *E.P.E.C.*, by R.Harper, pg.217 for biography; founding member of the O.S.A. and charter member of the R.C.A.; *N.G.C. Vol.III*, by R.Hubbard, pg.208; *A.G.O.*, by the A.G.O., pg.299; *M.M.F.A.*, by E.McMann, pg.255 and *R.C.A.A.*, by E.McMann, pg.271; biography in *Dict. of Canadian Artists — Vol.4*, by C.MacDonald, pg.1113; *Robson*, pg.42; *Colgate*, pg.24

**211****BEECHES BY THE LAKE**

watercolour on paper

10.5 x 14.5 in. / 27 x 37 cm. Dated: 1918

signed lower right; titled and inscribed 'To Betty from her grandfather with good wishes for Xmas, 1918' on paper attached verso

Prov: Masters Gallery, Calgary, and Kaspar Gallery, Toronto, labels verso

ESTIMATE: 1,200/1,500

**212****UNTITLED — FOOTHILL STREAM**

watercolour on paper

9 x 13 in. / 23 x 33 cm. Dated: 1925

signed lower left; inscribed 'From the artist with all good wishes, Christmas, 1925 verso; laid down on paper board

ESTIMATE: 800/1,200

**213****UNTITLED — FOREST ROAD**

watercolour on paper

10.5 x 16.5 in. / 27 x 42 cm. Dated: 1907

signed and dated lower left; signed lower right

ESTIMATE: 800/1,200

**HENRI LEOPOLD MASSON**

C.G.P., C.S.P.W.C., F.C.A., O.S.A.

[1907-1996] Canadian

see *Henri Masson*, by M.Gingras, Collection Signatures, 1981 and *Henri Masson, La Vision d'un Peintre*, by C.Bouchard, Les Editions Lecha, 1979; *R.C.A.A.*, by E.McMann, pg.275 and *M.M.F.A.*, by E.McMann, pg.257 for exhibition list; *Dict. of Canadian Artists — Vol.4*, by C.MacDonald, pg.1141 for biography

**214****UNTITLED — SPRING LANDSCAPE**

oil on canvas

16 x 20 in. / 41 x 51 cm. Dated: ca. 1950

signed lower right

ESTIMATE: 2,500/3,500

**215****UNTITLED — GATINEAU LANDSCAPE**

oil on masonite

10 x 12 in. / 25 x 30 cm. Dated: ca. 1968

signed lower right

Prov: Masters Gallery, Calgary, label verso;

ex-collection Claude Laberge, Montreal

ESTIMATE: 2,000/2,500



**MARMADUKE MATTHEWS**

O.S.A., R.C.A.

[1837-1913] Canadian biography in *E.P.E.C.*, by R.Harper, pg.219, founding member of both O.S.A. & R.C.A. — first western trip in 1889; *N.G.C. Vol.III*, by R.Hubbard, pg.401; *A.G.O.*, by the A.G.O., pg.301; *M.M.F.A.*, by E.McMann, pg.257 and *R.C.A.A.*, by E.McMann, pg.276; biography in *Dict. of Canadian Artists — Vol.4*, by C.MacDonald, pg.1153; *Robson*, pg.42; *Colgate*, pg.24

**2  
1  
6**

NANAIMO

watercolour on paper  
9.75 x 15 in. / 25 x 38 cm.  
signed lower right; bears title verso  
Prov: private collection, Victoria  
ESTIMATE: 700/900

**HENRIETTA MABEL MAY**

B.C.S.A., C.G.P., F.C.A., A.R.C.A.

[1884-1971] Canadian see *N.G.C. Vol.III*, by R.Hubbard, pg. 210; *B.C. Women Artists 1885-1985*, by N.Tuele, A.G.G.V.; *Dict. of Canadian Artists — Vol.4*, by C.MacDonald, pg.1156; *Canadian Impressionism*, by P.Duval, pg.104, McClelland & Stewart, 1990; *M.M.F.A.*, by E.McMann, pg.261 for exhibition list; a founding member of the Canadian Group of Painters

**2  
1  
7**

UNTITLED — THE ARTIST AND HER MODELS

oil on paper board  
10 x 14.5 in. / 25 x 37 cm.  
signed lower right  
ESTIMATE: 1,500/2,000

**O. HAROLD MCAVOY**

[1891-1977] Canadian

exhibition list in *R.C.A.A.*, by E.McMann, pg.248

**2  
1  
8**

MUSKOKA ROCKS, PINE LAKE, ONTARIO

oil on canvas board  
8.5 x 10.25 in. / 22 x 26 cm. Dated: 1942  
signed lower right; titled on label verso;  
stamped date verso  
ESTIMATE: 400/600

**IRENE E. MCCAUGHERTY**

[1914-1996] Canadian

see *Yesterday's Memories*, by I.McCaugherty, pub. by the artist, 1988; *The Ladder's We Climb*, by I.McCaugherty, pub. by the artist, 1994 was recently published and is available through Masters Gallery, Calgary; *By a Lady, Celebrating Three Centuries of Art by Canadian Women*, by M.Tippett, Penguin Group, 1992

**2  
1  
9**

SPRINGS IN THE AIR

watercolour on paper  
7.5 x 21 in. / 19 x 53 cm. Dated: 1984  
signed, titled and dated lower left  
Ref: invitation to Masters Gallery exhibition  
of the artist verso  
ESTIMATE: 500/700

**ROBERT F.M. MCINNIS**

[b.1942] Canadian

see *Spaces and Places — Eight Decades of Landscape Painting in Alberta*, by J.Ironside, pg.106 as well as *Dict. of Canadian Artists — Vol.4*, by C.MacDonald, addendum for biography

**2  
2  
0**

YELLOW WINDOW

oil on masonite  
10 x 8 in. / 25 x 20 cm. Dated: 1989  
signed and dated lower centre; bears title on label verso  
Prov: Masters Gallery, Calgary, label verso  
ESTIMATE: 500/700

**ALEXANDER SAMUEL MILLAR**

O.S.A.

[1921-1978] Canadian

biography and another example in *N.G.C. Vol.III*, by R.Hubbard, pg.213; exhibition list in *R.C.A.A.*, by E.McMann, pg.286; biography in *Dict. of Canadian Artists — Vol.4*, by C.MacDonald, pg.1215

**2  
2  
1**

LAST SNOW PATCH

oil on masonite  
18 x 24 in. / 46 x 61 cm.  
signed lower right; titled verso  
ESTIMATE: 600/800

**DAVID BROWN MILNE**

C.S.P.W.C.

[1882-1953] Canadian

see *David Milne*, ed.I.Thom, V.A.G., 1992 and *Reflections in a Quiet Pool — The Prints of David Milne*, by R.Tovell, N.G.C., 1980 for the definitive texts on this artist's career; *N.G.C. Vol.III*, by R.Hubbard, pg.213; *A.G.O.*, by the A.G.O., pg.304

**2  
2  
2**

PAINTING PLACE / HILLTOP

colour drypoint on paper  
4.75 x 6.75 in. / 12 x 17 cm. Dated: 1931  
signed with initials in plate upper left part of lake;  
signed along bottom; State V  
Ref: catalogue #63 in *Reflections in a Quiet Pool*,  
by R.Tovell — ed.3100, a total of 8 sets of two plates  
where required for the total edition  
ESTIMATE: 800/1,000

**JANET MITCHELL**

A.S.A., C.S.P.W.C., R.C.A.

[b.1912] Canadian

see *Janet Mitchell, Life and Art*, by P.Armstrong, Hyperion Press, 1990 and *N.G.C. Vol.III*, by R.Hubbard, pg.219, for biography and painting in the N.G.C.; *Dict. of Canadian Artists — Vol.4*, by C.MacDonald, pg.1240 for biography; included in *Jubilee Exhibition of Alberta Paintings*, by J.Nicoll, pg.23, Calgary Allied Art Centre, 1955

3333

**FOREIGNERS**

watercolour on paper

20 x 28.75 in. / 51 x 73 cm. Dated: 1980

signed and dated lower right; archival mat

Prov: corporate collection, Calgary

ESTIMATE: 1,500/2,000

2244

**MAIN STREET**

watercolour on paper

15.5 x 22.25 in. / 39 x 57 cm. Dated: ca. 1970

signed lower right

Prov: purchased from Kensington Fine Art Gallery, Calgary; private collection, Calgary

ESTIMATE: 900/1,200

2255

**UNTITLED — EIGHT FIGURES AND FIVE BIRDS**

watercolour on paper

14 x 21.5 in. / 36 x 55 cm. Dated: ca. 1970

signed lower right

Prov: purchased from Kensington Fine Art Gallery, Calgary; private collection, Calgary

ESTIMATE: 900/1,200

**GLADYS ELEANOR MONTGOMERY**

[fl.1951] Canadian

biography in *Dict. of Canadian Artists — Vol.4*, by C.MacDonald pg.1268

2266

**UNTITLED — KENSINGTON MARKET, TORONTO**

oil on canvas

17 x 21 in. / 43 x 53 cm.

signed lower left

ESTIMATE: 1,400/1,800

**JUNE MONTGOMERY**

C.S.P.W.C.

[b.1929] Canadian

2277

**LOW SWING OVER MORESBY ISLAND**

watercolour on paper

16.75 x 22.5 in. / 43 x 57 cm. Dated: 1984

signed, titled, and dated on paper backing

Ref: exhibition label for The Canadian Society of Painters in Watercolour (no date) verso

Prov: corporate collection, Calgary

ESTIMATE: 400/600

**E. HARTLEY MOONEY**

19-20th century British

2288

**CASTLE FARM, TEALLY, LINCOLNSHIRE**

oil on canvas board

13 x 16 in. / 33 x 41 cm. Dated: ca. 1934

titled on artist's label verso

Prov: T. Eaton Fine Art, Toronto, label verso

ESTIMATE: 500/700

**DAVID JOHN MORE**

[b.1947] Canadian

biography and another example in *Measure of Success: Graduates of the A.C.A. 1963-1984*, by L.Greenwood, pg.98

2299

**FOREST PASSAGE WITH MINIATURE DAFFODILS**

oil on masonite

15 x 14.75 in. / 38 x 37 cm. Dated: 1983

signed lower centre;

signed, titled, dated and inscribed verso

Prov: corporate collection, Calgary

ESTIMATE: 300/400

**EDMUND MONTAGUE MORRIS**

C.A.C., O.S.A., A.R.C.A.

[1871-1913] Canadian

see other examples and biography in *N.G.C. Vol.III*, by R.Hubbard, pg.229 and *A.G.O.*, by the A.G.O., pg.325; *Canadian Art Club 1907-1915*, by R.Lamb, E.A.G., 1988 — founding member

2300

**MOONLIGHT, GASPE**

oil on panel

7 x 10.25 in. / 18 x 26 cm.

bears name verso; bears name and title on plaque

ESTIMATE: 900/1,200

**JULIA MURPHY**

[fl.1948] Canadian

2311

**UNTITLED — INNER FOREST MOVEMENT**

oil on canvas board

16 x 11.75 in. / 41 x 30 cm. Dated: 1950

signed and dated lower right

Ref: clippings on the artist attached verso

ESTIMATE: 900/1,200

**GABOR L. NAGY**

[b.1945] Canadian

listed in *Guide Vallee, III Edition*, by F.Vallee, pg.835, pub. Le Guide Vallee, 1992

2322

**ANEMONES IN ANTIQUE**

oil on paper board

12 x 9 in. / 30 x 23 cm.

signed and titled on paper verso

Prov: Masters Gallery, Calgary, label verso

ESTIMATE: 400/600

**233** ORIENTAL POPPIES  
oil on paper board  
6 x 7.75 in. / 15 x 20 cm.  
signed lower right; titled on paper verso  
ESTIMATE: 300/500

### JAMES [JIM] MCLAREN NICOLL

A.S.A.  
[1892-1986] Canadian  
see *Paintings and Poetry — Jim Nicoll* by Glenbow-Alberta Institute; *Mountains and the Sky*, by L.Render, pg.199 and 200 for works in the collection of the Glenbow; biography in *Dict. of Canadian Artists — Vol.5*, by C.MacDonald, pg.1382; biography and another example in *Artists of Alberta*, by S.Baker, pg.46, U. of A. Press, 1980

**234** UNTITLED — HILLS AND TREES  
oil on board  
12 x 14.25 in. / 30 x 36 cm.  
signed lower right  
Prov: E.R. Lamm Art Studio, Calgary, label verso;  
private collection, Calgary  
ESTIMATE: 900/1,200

### MARION FLORENCE NICOLL

A.S.A., R.C.A.  
[1909-1985] Canadian  
see *Marion Nicoll, A Retrospective 1959-1979*, by E.A.G., 1975; *Marion Nicoll R.C.A.*, by B.Joyner, Masters Gallery, 1979; *Marion Nicoll, Art and Influences*, by C.Jackson, Glenbow Museum, 1986; and *Founders of the A.C.A.*, by V.Greenfield, pg.94 for biography

**235** BLACK BIRCH  
watercolour on paper  
11.25 x 14.25 in. / 29 x 36 cm.  
signed lower left  
ESTIMATE: 700/900

### WOJCIECH NOWAKOWSKI

20th century Canadian

**236** BE OR NOT TO BE  
oil on masonite  
20 x 24 in. / 51 x 61 cm. Dated: 1993  
signed and dated lower right; signed and titled verso  
ESTIMATE: 1,200/1,500

### WILLIAM ABERNETHY OGILVIE

C.G.P., C.S.P.W.C., R.C.A.  
[1901-1989] Canadian  
biography and other examples in *N.G.C., Vol.III*, by R.Hubbard, pg.239 and *A.G.O.*, by the A.G.O., pg.343; exhibition list in *R.C.A.A.*, by E.McMann, pg.310 and *M.M.F.A.*, by E.McMann, pg.289; biography in *Dict. of Canadian Artists — Vol.5*, by C.MacDonald, pg.1423

**237** A.Y. [JACKSON] SKETCHING  
graphite on paper  
11.75 x 17.25 in. / 30 x 44 cm. Dated: 1962  
signed, titled and dated lower left; archival mat  
Prov: Petley Jones Gallery, Vancouver, B.C.  
ESTIMATE: 500/600

### TONI ONLEY

B.C.S.A., C.S.P.W.C., A.R.C.A.  
[b.1928] Canadian  
see *Toni Onley: A Retrospective Exhibition*, by T.Lindberg, 1978, V.A.G.; *Toni Onley: A Silent Thunder*, by R.Boulet, Prentice Hall, 1981; *Onley's Arctic*, by T.Onley, Douglas and McIntyre, 1989; *Dict. of Canadian Artists — Vol.5*, by C.MacDonald, pg.1435 for biography

**238** HARRISON LAKE, B.C., AUGUST 7, 1978  
watercolour on paper  
11.5 x 15 in. / 29 x 38 cm. Dated: 1978  
signed, titled and dated along bottom  
Prov: corporate collection, Calgary;  
West End Gallery, Edmonton, label verso  
ESTIMATE: 700/900

### FRANKLIN [FRANK] PALMER

A.S.A., C.S.P.W.C., R.C.A.  
[1921-1990] Canadian  
see *Founders of the A.C.A.*, by L.Greenfield, pg.96, for biography and another example of the artist's work as well as *Dict. of Canadian Artists — Vol.5*, by C.MacDonald, pg.1471 for biography; included in *Jubilee Exhibition of Alberta Paintings*, by J.Nicoll, pg.25, Calgary Allied Art Centre, 1955; *A.G.O.*, by the A.G.O., pg.348

**239** SHEEP RIVER #2  
oil on canvas  
22 x 26 in. / 56 x 66 cm.  
signed lower right; bears title on label verso  
Prov: corporate collection, Calgary;  
Canadian Art Galleries, Calgary  
ESTIMATE: 600/800

### MARJORIE PARK

20th century Canadian  
the artist was a Vancouver artist who studied with Frederick Varley

**240** ABSTRACTION — PORTRAIT OF A WOMAN  
oil on canvas  
28 x 24 in. / 71 x 61 cm.  
signed lower right; bears title 'Abstraction'  
on old exhibition label verso  
Ref: photograph verso indicates old frame had a  
Vancouver Art Gallery, 1st Annual B.C. Artists Exhibition,  
1932 catalogue #27 label attached  
ESTIMATE: 1,500/2,500

**WILLIAM PARKER**

[b.1946] Canadian  
 biography in *Shell Canada Collection*, by B.Shammas, pg.41, Shell Canada, Calgary, 1977; biography and another example in *Artists of Alberta*, by S.Baker, pg.74, University of Alberta Press, 1980;

**241** FIGURE STUDY #6  
 graphite on paper  
 14 x 13.75 in. / 36 x 35 cm.  
 signed lower right; titled on label verso  
 Prov: private collection, Calgary;  
 Canadian Art Galleries, label verso  
 ESTIMATE: 700/900

**GEORGE DOUGLAS PEPPER**

C.G.P., C.S.P.W.C., O.S.A., R.C.A.  
 [1903-1962] Canadian  
 biography and other examples in *N.G.C. Vol.III*, by R.Hubbard, pg.245; *A.G.O.*, by the A.G.O., pg.363; exhibition list in *R.C.A.A.*, by E.McMann, pg.322; *M.M.F.A.*, by E.McMann, pg.300; biography in *Dict. of Canadian Artists — Vol.5*, by C.MacDonald, pg.1590

**242** UNTITLED — MY NORTHERN TRIP  
 oil on canvas  
 22 x 33 in. / 56 x 84 cm.  
 signed lower left  
 ESTIMATE: 6,000/8,000

**243** THE ATHABASCA GLACIER  
 oil on panel  
 12.5 x 14.75 in. / 32 x 37 cm. Dated: ca. 1943  
 signed lower right; signed and titled verso  
 Ref: bears inscription 'O.S.A. Small Picture Exhibition, 1943' verso; the artist was teaching at the Banff School of Fine Art in 1942 when this painting was probably done  
 ESTIMATE: 2,000/2,500

**WILLIAM PEREHUDOFF**

R.C.A.  
 [b.1919] Canadian  
 see *Saskatchewan Art and Artists*, by N.Dillow, pg.41, Norman Mackenzie Gallery, 1971; *Dict. of Canadian Artists — Vol.5*, by C.MacDonald, pg.1596 for biography; *William Perehudoff*, by R.Christie, Glenbow-Alberta Institute, 1977; *William Perehudoff*, by N.Tousley, Mendel Art Gallery, 1993; *Biographical Dict. of Saskatchewan Artists — Men*, by M.Newman, pg.194

**244** UNTITLED — ABSTRACT STRIPES  
 acrylic on canvas  
 10.25 x 20 in. / 26 x 51 cm. Dated: 1966  
 signed and dated verso  
 Prov: private estate, Saskatchewan  
 ESTIMATE: 900/1,200

**245** ACP-78-2  
 acrylic on paper  
 29.75 x 21.75 in. / 76 x 55 cm. Dated: 1978  
 signed and titled verso; archival mat front and back  
 Prov: corporate collection, Calgary  
 ESTIMATE: 600/800

**WALTER JOSEPH PHILLIPS**

A.S.A., C.P.E., C.S.P.W.C., M.S.A. R.C.A.  
 [1884-1963] Canadian  
 see *Walter J. Phillips*, by D.Scott, Ryerson Press, 1947; *Walter J. Phillips, A Selection of His Works and Thoughts*, by M.Gibbon, N.G.C., 1978; *The Tranquility and the Turbulence: The Life and Works of Walter J. Phillips*, by R.Boulet, Loates Publishing, 1981; web site at [www.sharecome.ca/phillips/](http://www.sharecome.ca/phillips/)

**246** SUMMER IDYLL #85/100  
 colour woodblock on paper  
 17.75 x 12 in. / 45 x 30 cm. Dated: 1926  
 20.5 x 14.25 in. / 52 x 36 cm. — Paper Size  
 signed with monogram and dated in block lower right; signed, titled and numbered along bottom; minor handling marks; archival material throughout  
 Ref: *Scott CW#51*; *MBL #85* ed:100; watercolour and print illustrated in *H.B.C. The Beaver* magazine  
 Prov: private collection, Alberta  
 ESTIMATE: 6,000/8,000

**247** MAMALILICoola, BRITISH COLUMBIA #12/100  
 colour woodblock on paper  
 12.25 x 14 in. / 31 x 36 cm. Dated: 1928  
 13 x 15 in. / 33 x 38 cm. — Paper Size  
 signed in block lower right; signed, titled and numbered along bottom  
 Ref: *Scott CW#77*; *MBL #112* ed:100; illustrated in *Walter J. Phillips*, by M.Gibbon, pg.67, N.G.C. and *W.J. Phillips* by D.Scott, pg.19  
 Prov: Petley Jones Gallery, Vancouver, label verso  
 ESTIMATE: 6,000/8,000

248

**ABOVE LAKE LOUISE**  
 colour woodblock on paper  
 7.5 x 6.25 in. / 19 x 16 cm. Dated: 1945  
 8.5 x 7.25 in. / 22 x 18 cm. — Paper Size  
 signed; in folio with foreword by the artist;  
 archival mat front and back  
 Ref: *Scott CW#138*; *MBL #239* ed:200;  
 commissioned for The Woodcut Society, Alexandria  
 Prov: private collection, Calgary  
 ESTIMATE: 2,000/2,500



249

**SHARP'S DOCK, PENDER HARBOUR #86/100**  
 colour woodblock on paper  
 9.25 x 14 in. / 23 x 36 cm. Dated: 1952  
 10.25 x 15 in. / 26 x 38 cm. — Paper Size  
 titled and numbered along bottom; bears name;  
 some restoration of paper; laid down on archival mat  
 board; some paper loss; archival mat front and back  
 Ref: *HBC CW#146*; *MBL #247* ed:100  
 Prov: private collection, B.C.; Canadian Art Galleries,  
 Calgary, label verso  
 ESTIMATE: 2,000/2,500

250

**TUNNEL MOUNTAIN #34/100**  
 colour woodblock on paper  
 7.25 x 14.5 in. / 18 x 37 cm. Dated: 1944  
 8.5 x 15.5 in. / 22 x 39 cm. — Paper Size  
 signed with initials in block lower centre; signed, titled,  
 numbered and inscribed 'second state' along bottom;  
 archival material throughout  
 Ref: *Scott CW#137*; *MBL #238* first ed:100  
 plus second ed:100  
 Prov: private collection, Alberta  
 ESTIMATE: 1,500/2,000



251

**CANMORE**  
 colour woodblock on paper  
 3.75 x 5 in. / 10 x 13 cm. Dated: 1947  
 signed below image; slight crease; archival mat  
 Ref: *HBC CW#140*; *MBL #242* ed:200-300;  
 Christmas card for 1947  
 ESTIMATE: 900/1,200

252

**CATHCART'S ISLAND, MUSKOKA #112**  
 colour woodblock on paper  
 6.5 x 7.25 in. / 17 x 18 cm. Dated: 1927  
 initialed in block lower left;  
 signed and numbered along bottom; archival mat  
 Ref: *Scott CW#65* ed:200; *MBL #100* ed:250;  
 from *Ten Canadian Colour Prints* portfolio of 1927  
 ESTIMATE: 700/900

253

**CHURCH AT MORLEY, ALBERTA**  
 colour woodblock on paper  
 3.5 x 3.25 in. / 9 x 8 cm. Dated: 1942  
 signed with initials in block lower right;  
 signed below image; bears inscription  
 'MacDougall Church at Morley, Alberta'  
 on paper verso  
 Ref: *Scott CW#132*; *MBL #232* ed: unknown;  
 Christmas card for 1942  
 Prov: private collection, Victoria  
 ESTIMATE: 600/800

254

**CINERARIA #12**  
 colour woodblock on paper  
 6.75 x 8.25 in. / 17 x 21 cm. Dated: 1928  
 signed and numbered along bottom;  
 laid down on mat board  
 Ref: *Scott CW#81* ed:250; *MBL #117* ed:300;  
 from *The Canadian Scene* portfolio; the artist used  
 three blocks to produce this print on Goyu paper  
 Prov: private collection, Calgary;  
 Hudson Bay Picture Department, label verso  
 ESTIMATE: 500/700

255

**SMOKE HAZE, LAKE OF THE WOODS**  
 colour woodblock on paper  
 5.75 x 8.75 in. / 15 x 22 cm. Dated: 1935  
 signed lower right; archival mat  
 Ref: *Scott CW#118*; *MBL #212* ed:100;  
 included in *Winter Wood Cuts* portfolio [ed:100] of 1936  
 Prov: private collection, Calgary  
 ESTIMATE: 500/700

256

**HOUSE OF THE GULLS, KARLUKWEES #84/120**  
 wood engraving on paper  
 4.5 x 5 in. / 11 x 13 cm. Dated: 1930  
 11 x 8 in. / 28 x 20 cm. — Paper Size  
 signed and numbered along bottom;  
 archival mat front and back; unframed  
 Ref: *Scott WE#4*; *MBL #139* ed:120;  
 from *Essays in Wood* portfolio  
 ESTIMATE: 400/500

**JOSEPH PLASKETT**

B.C.S.A., C.G.P., R.C.A.

[b.1918] Canadian

see *Joe Plaskett and His Paris, In Search of Time Past*, by Fine Arts Gallery, University of B.C., 1971; *N.G.C. Vol.III*, by R.Hubbard, pg.251 and *A.G.O.*, by the A.G.O., pg.380 for other examples

257

**A GARDEN — EARLY MORNING**

oil on canvas

23.5 x 28.5 in. / 60 x 72 cm. Dated: 1978

signed and dated lower right; titled verso

Prov: corporate collection, Calgary

ESTIMATE: 1,500/2,000

**JACQUES POIRIER**

[b.1942] Canadian

biography and another example in *Guide Vallee, III Edition*, by F.Vallee, pg.892, pub. Le Guide Vallee, 1992

258

**LES EAUX MORTES**

acrylic on canvas

20 x 24 in. / 51 x 61 cm.

signed lower left; signed and titled verso

ESTIMATE: 900/1,200

**JANE ASH POITRAS**

[b.1951] Canadian

see *Who Discovered the Americas, Recent Work by Jane Ash Poitras*, by J.Clark, Thunder Bay Art Gallery, 1992; biography and another example in *Survey Alberta 88*, by A.MacKay, pg.49, A.C.A., 1988; included in *Indigena: Contemporary Native Perspectives*, by G.McMaster, pg.164, Canadian Museum of Civilization, 1992; included in the Alberta Biennial of Contemporary Art, Edmonton Art Gallery and Glenbow Museum, 1996

259

**SPIRITS IN THE FOREST**

mixed media on masonite

13.25 x 12.75 in. / 34 x 32 cm.

signed lower right; bears title on exhibition label verso

Prov: private collection, Edmonton

ESTIMATE: 600/800

260

**ESPECIALLY FOR YOU**

mixed media on paper

9.5 x 7.5 in. / 24 x 19 cm.

signed lower right; bears title on label verso

Prov: private collection, Edmonton

ESTIMATE: 500/700

**MARTHE RAKINE**

C.G.P., O.S.A.

[b.1906] Canadian

biography and another example in *N.G.C., Vol.III*, by R.Hubbard, pg.253, *A.G.O.*, by the A.G.O., pg.382; exhibition list in *R.C.A.A.*, by E.McMann, pg.337 and *M.M.F.A.*, by E.McMann, pg.316

261

**UNTITLED — WOMAN SEATED AT A TABLE**

oil on masonite

26 x 36 in. / 66 x 91 cm.

signed lower right

ESTIMATE: 2,000/3,000

**GASTON REBRY**

[b.1933] Canadian

see *Dict. of Canadian Artists — Vol.7*, by C.MacDonald, pg.1959 for biography; *Guide Vallee, III Edition*, by F.Vallee, pg.923, pub. Le Guide Vallee, 1992

262

**ON THE LAKE**

oil on canvas

16 x 19.75 in. / 41 x 50 cm.

signed lower right;

signed and titled verso with artist's stamp

Prov: Masters Gallery, Calgary, label verso

ESTIMATE: 800/1000

263

**MATIN EN DECEMBRE**

oil on canvas

10 x 12 in. / 25 x 30 cm.

signed lower right; signed, titled and artist stamp verso

ESTIMATE: 700/900

264

**NO LOT****REMBRANDT HARMENSZ VAN RYN**

[1606-1669] Dutch

the standard reference is *Catalogue Raisonne, Rembrandt* by A.Bartsch, 1797; a more recent issue is *Rembrandt, the Complete Etchings*; by K.G.Boon, Abrams, n.d.

265

**SIX'S BRIDGE #728/1000**

etching on paper

5.5 x 9 in. / 14 x 23 cm. Dated: 1645

signed and dated in plate lower right; bears inscription

'Hand printed by R.de Boer' and number along bottom;

note verso states '... printed in 1961 in Amsterdam

from original plate'; archival mat

Ref: *Bartsch cat.#208*

ESTIMATE: 250/350

**GEOFFREY HAMILTON RHOADES**

[b.1898] Canadian

**266** LYMINGTON RIVER

oil on canvas

16 x 24 in. / 41 x 61 cm.

signed lower left; signed and titled on label verso

Prov: James Bourlet and Sons Frame Makers, London, label verso

ESTIMATE: 900/1,200

**CLEVELAND ROCKWELL**

[1837-1907] American

biography in *Who Was Who in American Art*, by Falk; *Artists of the American West*, Vol.1, by D.Dawdy, pg.198, Sage Books, 1974; biography and other examples in *The Mountains and the Sky*, by L.Render, pg.79, Glenbow Alberta Institute, 1974; his work is also in the permanent collections of the Seattle Art Museum, Anchorage Museum, Oregon Historical Society plus many others

**267** FORTY MILE CREEK NEAR BANFF

watercolour on paper

13.5 x 19.5 in. / 34 x 50 cm. Dated: 1905

signed and dated lower right; titled on plaque; in hand

carved 22 carat gold leaf Richard Tobey 'Federal' frame

Ref: see *Banff Springs Hotel, 1904*, in *The Mountains and the Sky*, pg.63 for similar work in the Glenbow Museum; the building in the distance is Dr. R.G.Brett's Sanitarium built in 1886; this painting is recorded in the Smithsonian Institution's *Inventory of American Paintings Executed Before 1914*

Prov: ex-collection Charles Pallet, Portland and

by descent to a member of the family

ESTIMATE: 9,000/12,000

**A. LEE ROGERS**

[ac.1871-94] Canadian

biography in *E.P.E.C.*, by R.Harper, pg.270**268** KAMLOOPS

oil on canvas

14 x 21 in. / 36 x 53 cm. Dated: ca. 1890

signed lower right; canvas relined and some touch up

Ref: according to R.Harper, the artist was in Fort Garry in 1871 and in Vancouver in 1894

ESTIMATE: 2,500/3,000

**CARL CLEMENS MORITZ RUNGUIS**

N.A.

[1869-1959] American

see *Carl Rungius: Wildlife of the Artist of the West*, by J.Whyte, Glenbow Museum, 1985 and *Carl Rungius: The Complete Prints*, by D.Crouch, Mountain Press, 1989; *N.G.C. — Vol.II: Modern European Schools*, by R.Hubbard, pg.171; biography in *Dict. of American Painters*, by M.Fielding, pg.311; *Benezit*, Vol.9, pg.185

**269** UNTITLED — BUGLING ELK

oil on canvas board

9 x 12 in. / 23 x 30 cm.

signed lower right

Prov: private collection, Ontario

ESTIMATE: 8,000/10,000

**270** MULE DEER

etching on paper

7.75 x 10.75 in. / 20 x 27 cm. Dated: 1927

9.75 x 12.75 in. / 25 x 32 cm. — Paper Size

signed below image in margin;

some glue stains and minor repair in margins

Ref: illustrated in *Carl Rungius: the Complete Prints*,

by D.Crouch, pg.129, according to the author, the edition

was 50; the plate for this print is now in the collection

of the Glenbow Museum, Calgary

Prov: private collection, Toronto

ESTIMATE: 3,000/4,000

**271** COMING TO THE CALL

etching on paper

7.75 x 10.75 in. / 20 x 27 cm. Dated: 1937

10.75 x 14.25 in. / 27 x 36 cm. — Paper Size

signed, inscribed and dated Sept. 1946

Ref: illustrated in *Carl Rungius: the Complete Prints*,

by D.Crouch, pg.173, according to the author, the edition

was unknown; the plate for this print is now in the

collection of the Glenbow Museum, Calgary

Prov: private collection, Toronto

ESTIMATE: 2,000/3,000



**JOHN HENRY SANDHAM**

O.S.A., R.C.A.

[1841-1910] Canadian

see *A.G.O.*, by the A.G.O., pg.408; *N.G.C. Vol.III*, by R.Hubbard, pg. 272 ; *E.P.E.C.*, by R.Harper, pg.778; exhibition list in *R.C.A.A.*, by E.McMann, pg.363 and *M.M.F.A.*, by E.McMann, pg.338; *Robson*, pg.39; *Colgate*, pg.20

**272** UNDER THE MISTLETOE

oil on board

12 x 9.25 in. / 30 x 23 cm. Dated: 1910

signed with initials upper left; inscribed verso

ESTIMATE: 2,500/3,500

**273** WOMAN BEFORE THE HEARTH

watercolour on paper

9.5 x 13.5 in. / 24 x 34 cm.

bears title on plaque

Prov: Galerie Bernard Desroches, Montreal and Masters Gallery, Calgary, labels verso

ESTIMATE: 1,000/1,200

**274** CUTTING THE GRAPES

gouache on paper

18.5 x 12 in. / 47 x 30 cm. Dated: 1886

signed lower right

Ref: see *A New Class of Art, the Artist's Print in Canadian Art 1877-1920*, by R.Tovell, pg. 48, N.G.C.,

1996 for etching of this time period

ESTIMATE: 1,000/1,200

**ALLEN SAPP**

R.C.A.

[b.1929] Canadian

see *Kiskayetum — Allen Sapp: — Retrospective*, by B.Boyer, MacKenzie Art Gallery, 1994; *Cree Life — the Art of Allen Sapp*, by J.Warner, J.J.Douglas, 1977 as well as *Two Spirits Soar — The Art of Allen Sapp, The Inspiration of Allan Honor*, by W.Kinsella, Stoddart Publishing, 1990 and *Time for Dialogue*, by J.Cardinal-Schubert, pg.19, Calgary Aboriginal Awareness Society, 1992

**275** GRANDMOTHER HOLDING MEDICINE BAG

acrylic on canvas

16 x 20 in. / 41 x 51 cm. Dated: 1969

signed and dated lower right; signed, titled and dated on artist's label verso

Prov: private estate, Saskatchewan

ESTIMATE: 1,500/2,000

**276** UNTITLED — PREPARING DINNER

acrylic on canvas

5.25 x 7.25 in. / 13 x 18 cm.

signed lower right

Prov: private collection, Edmonton;

Downstairs Gallery, Edmonton, label verso

ESTIMATE: 400/600

**CARL FELLMAN SCHAEFER**

C.G.P., C.S.G.A., C.S.P.W.C., R.C.A.

[b.1903] Canadian

see *Carl Schaefer Retrospective Exhibition*, by G.Johnston, Sir George Williams University, 1969; *A.G.O.*, by the A.G.O., pg.410; and *N.G.C. Vol.III*, by R.Hubbard, pg. 275

**277** NEAR HAWK LAKE, HALIBURTON

watercolour on paper

11 x 15 in. / 28 x 38 cm. Dated: 1964

signed and dated lower right;

signed, titled and dated verso

Ref: 'N.C.J.W. Ottawa Section' exhibition label verso

ESTIMATE: 3,000/4,000

**278** THE FENCE #16/50

wood engraving on paper

4 x 3.75 in. / 10 x 10 cm. Dated: 1932

6.25 x 5 in. / 16 x 13 cm. — Paper Size

signed, titled, dated and numbered along bottom;

archival mat front and back; unframed

Ref: *Oka* #23 — extensive exhibition record,see *Oka*, pg.188; note under mat states edition

was never completed; illustrated pg.151 in

*Images of the Land, 1919-1945*, by P.Ainslie, cat. #148

Prov: purchased directly from the artist?

ESTIMATE: 600/800

**MARY SCHNEIDER**

O.S.A.

[1900-1992] Canadian

**279** PETITE MATANE — HOTEL DES PINS

mixed media on paper

8.75 x 11.5 in. / 22 x 29 cm. Dated: 1960

signed with monogram, signed,

dated and titled along bottom

ESTIMATE: 200/250



## BELGIAN SCHOOL

19th/20th century

**062** UNTITLED — INTERIOR OF A HOUSE  
oil on canvas  
12 x 15.75 in. / 30 x 40 cm.  
signed lower left; some scratches lower foreground  
Prov: purchased 1900-1910 in Belgium;  
private collection, Calgary  
ESTIMATE: 500/700

## CANADIAN SCHOOL

20th century

**281** UNTITLED — VIEW OF CALGARY  
watercolour on paper  
9.25 x 13 in. / 23 x 33 cm. Dated: ca. 1920  
unsigned; archival material throughout  
ESTIMATE: 900/1,200

## EUROPEAN SCHOOL

**281A** UNTITLED — FIGURE AT A DOORWAY  
etching on paper  
5 x 3.75 in. / 13 x 10 cm.  
5 x 3.75 in. / 13 x 10 cm. — Paper Size  
unframed  
ESTIMATE: 400/500

## JACK LEONARD SHADBOLT

B.C.S.A., C.G.P., C.S.G.A., C.S.P.W.C.

[b.1909] Canadian

see *Jack Shadbolt*, by S.Watson, Douglas and McIntyre, 1990; *Correspondences — Jack Shadbolt*, by P.Ainslie, Glenbow Museum, 1991; *In Search of Form*, by J.Shadbolt, McClelland, 1968; *Counterpoint: The Prints of Jack Shadbolt*, by K.Henry, Burnaby Art Gallery, 1996; *A.G.O.*, by the A.G.O., pg.417 and *N.G.C. Vol.III*, by R.Hubbard, pg.279

**262** BEAR CAGE, STANLEY PARK  
watercolour on paper  
22.5 x 30.75 in. / 57 x 78 cm. Dated: 1947  
signed and dated lower left; minor repair lower left;  
laid down on paper board  
Ref: exhibited #53 in *Jack Shadbolt Early Watercolours*, I.Thom, A.G.G.V., mentioned pg.10 "The latest images in this exhibition 'The Bear Cage, Stanley Park'...are excellent examples of a style first perfected years before..."  
Prov: corporate collection, Calgary;  
Downstairs Gallery, Edmonton stamp on back  
ESTIMATE: 6,000/8,000

## MARGARET SHELTON

A.S.A.

[1915-1984] Canadian

see *Margaret Shelton: Block Prints 1936-1984*, by P.Ainslie, Glenbow Museum; and *Printmaking in Alberta 1945-1985*, by B.Cochran, pg.132; and *Images of the Land, 1919-1945*, by P.Ainslie, pg.90, for biography and other examples of the artist's work; included in *Jubilee Exhibition of Alberta Paintings*, by J.Nicoll, pg.28, Calgary Allied Art Centre, 1955

## GAWDUNS SHACK

**283** oil on plywood  
12 x 16.75 in. / 30 x 43 cm. Dated: ca. 1937  
signed and artist's address verso;  
some board imperfections visible  
Ref: in 1937, the artist did a print by the same name, listed in *Margaret Shelton Block Prints*, cat.#3 dated 1937  
Prov: purchased directly from the artist;  
private collection, Calgary  
ESTIMATE: 750/1,000

## SHOOKS BARN #19

**284** watercolour on paper  
17.25 x 19.5 in. / 44 x 50 cm. Dated: 1973  
signed and dated lower left; archival mat  
Ref: slight variations on her block print of the same name, Shooks Barn, Hatzic, 1942 *MSBP #69* illustrated in *Images of the Land, 1919-1945*, by P.Ainslie, cat. #157, pg.153  
Prov: Masters Gallery, Calgary, label verso  
ESTIMATE: 600/800



**265** ED. 2, JOHNSON'S CANYON #52/100  
colour linoblock on paper  
4 x 5.5 in. / 10 x 14 cm. Dated: 1943  
5.75 x 7.25 in. / 15 x 18 cm. — Paper Size  
signed, titled, dated 1979, and numbered along bottom;  
archival mat front and back  
Ref: *MSBP #81* ed:300; also titled 'Second Falls, Johnson's Canyon'; exhibited *CPE 29th Annual*, 1945; illustrated *MSBP*, by P.Ainslie, front cover  
Prov: private collection, Calgary  
ESTIMATE: 300/500

**MARGARET SHELTON continued**

- 2866** CABIN AT ATHABASCA FALLS #25/100  
linoblock on paper  
7.5 x 10 in. / 19 x 25 cm. Dated: 1971  
8.5 x 12 in. / 22 x 30 cm. — Paper Size  
signed, titled, and dated 1972 along bottom;  
minor stain in margin below mat;  
archival mat front and back  
Ref: *MSBP #143* first state ed:100, second state ed:  
unknown; also titled 'Warden's Cabin at Athabasca Falls';  
illustrated *MSBP*, by P.Ainslie, pg.27  
Prov: private collection, Calgary  
ESTIMATE: 250/350

**CLAUDE A. SIMARD**

[b.1943] Canadian  
biography and another example in *Guide  
Vallee, III Edition*, by F.Vallee, pg.990

- 2877** UNTITLED — LES JEUX DANS LA TEMPEE  
acrylic on canvas  
35.75 x 47.75 in. / 91 x 121 cm. Dated: 1981  
signed and dated lower right  
Prov: corporate collection, Calgary  
ESTIMATE: 2,000/2,500

**MICHELINE ST. HILAIRE**

[b.1947] Canadian  
biography and another example in *Guide  
Vallee, III Edition*, by F.Vallee, pg.1004

- 2888** OCCASION SPECIALE  
oil on canvas  
31.75 x 40 in. / 81 x 102 cm.  
signed lower right; titled verso  
Prov: Masters Gallery, Calgary, label verso  
ESTIMATE: 600/800

**JOAN HALL STASESON**

20th century Canadian

- 2889** SOLITUDE  
oil on masonite  
12 x 16 in. / 30 x 41 cm.  
signed 'J.Hall' upper left  
ESTIMATE: 400/500

**DOROTHY AUSTIN STEVENS**

C.P.E, O.S.A., R.C.A.  
[1888-1966] Canadian  
biography and other examples in *N.G.C. Vol.III*,  
by R.Hubbard, pg.287 and *A.G.O.*, by the  
A.G.O., pg.430

- 2900** UNTITLED — GIRLS AT THE EDGE OF ALPINE VILLAGE  
etching on paper  
12 x 11.75 in. / 30 x 30 cm.  
signed along bottom; archival mat  
Ref: bears note verso  
'Exhibited Hamilton Art Gallery 1996'  
ESTIMATE: 500/700

**THOMAS ALBERT STONE**

O.S.A.  
[1894-1978] Canadian  
biography in *A.G.O.*, by the A.G.O., pg.433;  
exhibition list in *R.C.A.A.*, by E.McMann,  
pg.390; another example in *Yearbook of the  
Arts in Canada*, by B.Brooker, pl.28, MacMillan  
Co., 1936

- 2911** THE RIVER AND TREES  
oil on paper board  
10 x 11.75 in. / 25 x 30 cm.  
signed lower right; signed and titled on label verso  
ESTIMATE: 600/800

**GERALD T. TAILFEATHERS**

[1925-1975] Canadian  
see *Tailfeathers, Indian Artist* by H.Dempsey,  
Art Series 2, Glenbow-Alberta Institute, 1970  
for biography and other examples and *Time  
for Dialogue*, by J.Cardinal-Schubert, pg.20,  
Calgary Aboriginal Awareness Society, 1992

- 2922** UNTITLED — INDIAN CHIEF  
watercolour on paper  
4 x 3 in. / 10 x 8 cm.  
signed lower right; tipped on along top edge  
ESTIMATE: 500/700

**TAKAO TANABE**

A.R.C.A.  
[b.1926] Canadian  
see *Takao Tanabe 1972-1976 The Land* by  
J.Rule, MacKenzie Art Gallery, 1976; *N.G.C.  
Vol.III*, by R.Hubbard, pg.289; *A.G.O.*, by the  
A.G.O., pg.438

- 2922A** PRAIRIE WINTER, NEAR CREMONA  
watercolour on paper  
11 x 15 in. / 28 x 38 cm. Dated: 1978  
signed, titled and dated along bottom; archival mat  
Prov: Marlborough-Godard, Toronto, label verso  
ESTIMATE: 700/900

**FREDERICK BOURCHIER TAYLOR**

C.P.E., C.S.G.A., R.C.A.

[1906-1987] Canadian

see *Frederick B. Taylor, Graveur Realiste Radical*, by S.Gironnay, Bibliotheque Nationale du Quebec, 1996 as well as *The Society of Canadian Painter-Etchers and Engravers in Retrospect*, by A.Oko, pg.77, Art Gallery of Hamilton, 1981; *Printmaking in Quebec 1900-1950*, by D.Martin, pg.132, Musee du Quebec, 1988; *N.G.C. Vol.III*, by R.Hubbard, pg.290; *A.G.O.*, by the A.G.O., pg.439

293



**DOWNTOWN DETROIT, MICHIGAN FROM RIVERVIEW PARK, WINDSOR**  
oil on panel

9 x 11.75 in. / 23 x 30 cm. Dated: 1953  
signed lower right; signed, titled and inscribed  
'New Years Day, 1953' verso

Ref: in 1953, the House of Seagram privately published their *Cities of Canada, Reproductions from the Seagram Collection*, by B.Sandwell — the city of Windsor was painted by Frederick B. Taylor  
Prov: Dominion Gallery, Montreal, label verso  
ESTIMATE: 600/800

294

**MEXICAN HEAD AT SAN MIGUEL DE ALLENDE, MEXICO**  
oil on canvas board

16 x 12 in. / 41 x 30 cm. Dated: 1954  
signed and dated lower right;  
signed, titled and dated verso  
Prov: Dominion Gallery, Montreal, label verso  
ESTIMATE: 700/900

**VIVIAN THIERFELDER**

C.S.P.W.C.

[b.1949] Canadian

295

**SUNKISSED**

watercolour on paper  
4.25 x 6.25 in. / 11 x 16 cm. Dated: 1983  
signed and dated lower right; archival mat  
Prov: private collection, Calgary  
ESTIMATE: 1,200/1,500

**LIONEL ARTHUR JOHN THOMAS**

A.R.C.A.

[b.1915] Canadian

biography and another example in *N.G.C. Vol.III*, by R.Hubbard, pg.291; *A.G.O.*, by the A.G.O., pg.440; *Vancouver: Art and Artists 1931-1983*, by V.A.G., pg.425; exhibition list *R.C.A.A.*, by E.McMann, pg.401 and *M.M.F.A.*, by E.McMann, pg.373

296

**UNTITLED — CITY VIEW**

charcoal on paper  
18 x 11.75 in. / 46 x 30 cm.  
signed lower right; laid down on mat board;  
some handling marks

Ref: see two other examples of the artist's work illustrated in *Vancouver: Art and Artists 1931-1983*, pg.86 and 88  
ESTIMATE: 400/600

**MILDRED VALLEY THORNTON**

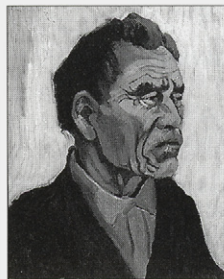
[1890-1967] Canadian

see *Mildred Valley Thornton, 1890-1967*, by Butler Galleries and Westbridge Fine Arts; biography in *Biographical Dict. of Saskatchewan Artists — Women*, by M.Newman, pg.252; listed in *British Columbia Women Artists 1885-1985*, by N.Teule, A.G.G.V.

297

**CHIEF FROM THE WEST COAST OF VANCOUVER ISLAND**  
oil on panel

20 x 16 in. / 51 x 41 cm.  
signed lower left; typed note states 'This picture was painted at Sardis at hop picking time.' verso  
Prov: Little Royal Gallery, Vancouver, stamp verso  
ESTIMATE: 1,500/2,000



**THORNTON continued**

**2898** UNTITLED — B.C. COASTAL SCENE WITH LOGS ON BEACH  
watercolour on paper  
6 x 9 in. / 15 x 23 cm.  
signed lower right; some light damage  
ESTIMATE: 300/400

**2999** UNTITLED — B.C. SCENE WITH HOUSE BY THE WATER  
watercolour on paper  
6 x 9 in. / 15 x 23 cm.  
signed lower right; some light damage  
ESTIMATE: 300/400

**3000** UNTITLED — TREES AND BRIDGE  
watercolour on paper  
9.25 x 9.5 in. / 23 x 24 cm.  
signed lower right  
ESTIMATE: 300/400

**HAROLD BARLING TOWN**

R.C.A.

[1924-1991] Canadian  
see *Town*, by D.Burnett, A.G.O., 1986 and  
exhibition list *M.M.F.A.*, by E.McMann, pg.378  
and *N.G.C. Vol.III*, by R.Hubbard, pg. 316  
for biography and other examples

**3001** GOD SERIES #8  
mixed media on paper  
19.25 x 25 in. / 49 x 64 cm. Dated: 1978  
signed and dated 'May.17.78' lower left  
Prov: corporate collection, Calgary;  
Waddington Galleries, Toronto, label verso  
ESTIMATE: 1,500/2,000

**3002** GOD SERIES #13  
mixed media on paper  
19.25 x 24.5 in. / 49 x 62 cm. Dated: 1979  
signed and dated 'Dec.78-Jan.4.79' lower right  
Ref: series mentioned in *Town*, by D.Burnett, pg.184  
and other work from this time period illustrated  
Prov: corporate collection, Calgary;  
Waddington Galleries, Toronto, label verso  
ESTIMATE: 1,500/2,000

**3003** SUMMER BRIDGE  
monoprint on paper  
17.75 x 23.75 in. / 45 x 60 cm. Dated: 1957  
signed, dated and indistinctly inscribed along bottom;  
archival mat  
Prov: corporate collection, Calgary  
ESTIMATE: 500/700

**H. WILLIAM TOWNSEND**

[b.1940] Canadian

**3004** GETTING CLOSE TO LAKE MCARTHUR,  
YOHO NATIONAL PARK  
acrylic on canvas  
12 x 16 in. / 30 x 41 cm.  
signed lower right; signed and titled verso  
Prov: private collection, Calgary  
ESTIMATE: 300/400

**JOHN DAVENALL TURNER**

A.S.A.

[1900-1980] Canadian  
see *Sunfield Painter, The Reminiscences of  
John Davenall Turner*, by J.Turner, University of  
Alberta Press, 1982 and *The Artful Codger*, by  
J.Turner, Whyte Foundation, Banff, 1978; *Shell  
Canada Collection*, by B.Shammas, pg.56, Shell  
Canada, Calgary, 1977; included in *Jubilee  
Exhibition of Alberta Paintings*, by J.Nicoll,  
pg.30, Calgary Allied Art Centre, 1955

**3005** UNTITLED — VIEW FROM SUNFIELD  
oil on canvas  
24 x 30 in. / 61 x 76 cm.  
signed lower right  
Prov: purchased directly from the artist;  
private collection, Calgary  
ESTIMATE: 1,200/1,500

**3006** WINTER LANDSCAPE  
oil on canvas  
18 x 24 in. / 46 x 61 cm.  
signed lower right; titled verso  
Prov: private estate, Calgary  
ESTIMATE: 500/700

**[IN STYLE OF] CORNELIS DE VISSCHER**

18-19th century European

**3007** UNTITLED — CHILD WITH BOWL AND SPOON  
graphite on paper  
5.25 x 4.25 in. / 13 x 11 cm.  
unsigned; archival mat front and back  
ESTIMATE: 500/700

**ELLA MAY WALKER**

A.S.A.

[1892-1960] Canadian  
see *Ella May Walker, An Alberta Modernist*, by  
H.Collinson, Friends of University Hospitals,  
1993 for biography and review of this Alberta  
artist and writer

**3008** UNTITLED — STILL LIFE  
oil on paper  
15.5 x 19.25 in. / 39 x 49 cm. Dated: ca. 1957  
some paper cracking lower left;  
archival material throughout  
Ref: exhibition label *Ella May Walker,  
An Alberta Modernist*, Provincial Extension  
Programme and the E.A.G., verso  
Prov: private collection, Edmonton  
ESTIMATE: 400/600

**3009** UNTITLED — SPRING FLOWERS  
oil and sand on paper board  
23 x 18.5 in. / 58 x 47 cm.  
signed on partial label verso; minor crack lower right  
Ref: exhibition label *Ella May Walker,  
An Alberta Modernist*, Provincial Extension  
Programme and the E.A.G., verso  
Prov: private collection, Edmonton  
ESTIMATE: 400/600

**310** SUNRISE ON THE OLD FARMSTEAD #3/30  
 silkscreen on paper  
 11.75 x 13.25 in. / 30 x 34 cm.  
 signed, titled and numbered along bottom  
 Prov: private collection, Edmonton  
 ESTIMATE: 150/250

### HARRY DRAPER WALLACE

C.P.E.  
 [1892-1977] Canadian

**311** UNTITLED — COTTAGES BY THE LAKE EDGE  
 oil on board  
 12 x 13.75 in. / 30 x 35 cm. Dated: 1959  
 signed and dated lower left  
 ESTIMATE: 500/700

### ANDY WARHOL

[1930-1992] American  
 see *Andy Warhol Prints — A Catalogue Raisonné*, by E.Feldman, Editions Schellman, N.Y. 1985; biography in *1991/92 PrintWorld Directory*, by S.Smith, pg.931; included in *Dict. des Peintres, Sculpteurs et Graveurs*, by E.Benezit, Vol.10, pg.638

**312** SAINT APOLLONIA #207/250  
 silkscreen on paper  
 30 x 22 in. / 76 x 56 cm. Dated: 1984  
 30 x 22 in. / 76 x 56 cm. — Paper Size  
 signed and number lower left; stamped  
 'Andy Warhol 1984' verso; minor handling marks  
 Ref: Feldman/Schellman cat. #332; from a portfolio of four; Saint Apollonia was the patron saint of dentistry  
 Prov: proceeds to The Medicine Hat Community Foundation, Medicine Hat, Alberta  
 ESTIMATE: 1,500/2,000

### CHARLES JOHN WAY

R.C.A.  
 [1835-1919] Canadian  
 biography in *E.P.E.C.*, by R.Harper, pg.324, charter member of the R.C.A.; exhibition list in *R.C.A.A.*, by E.McMann, pg.422 and *M.M.F.A.*, by E.McMann, pg.394; biography and another example in *N.G.C. Vol.III*, by R.Hubbard, pg.419; *Robson*, pg.94; *Colgate*, pg.34

**313** VENESIA  
 watercolour on paper  
 9.75 x 6.5 in. / 25 x 17 cm.  
 signed and titled lower right  
 ESTIMATE: 600/800

### WILLIAM PERCIVAL WESTON

A.R.C.A.  
 [1879-1967] Canadian  
 see *W.P.Weston*, by I.Thom, A.G.G.V., 1980; *Silence and Solitude — the Art of W.P.Weston*, by L.Richardson, Richmond Art Gallery, 1993; as well as *N.G.C. Vol.III*, by R.Hubbard, pg. 330 for other examples

**314** SILVER MOUNTAIN, NEW DENVER, SLOCAN LAKE, B.C.  
 oil on paper board  
 12 x 15 in. / 30 x 38 cm. Dated: 1945  
 signed and dated 1946 lower left;  
 titled and dated 1945 verso  
 Ref: in 1946 the artist retired as Art Master at the Provincial Normal School and a large retrospective exhibition was held at the Vancouver Art Gallery  
 ESTIMATE: 3,000/5,000

### RONALD YORK WILSON

C.G.P., O.S.A., R.C.A.  
 [1907-1984] Canadian  
 biography and another example in *N.G.C., Vol.III*, by R.Hubbard, pg.334; *A.G.O.*, by the A.G.O., pg.515; exhibition list in *R.C.A.A.*, by E.McMann, pg.432 and *M.M.F.A.*, by E.McMann, pg.403

**315** UNTITLED — LADY AT A MIRROR  
 oil on canvas board  
 18.5 x 8 in. / 47 x 20 cm. Dated: ca. 1949  
 signed lower right; note on paper states  
 'illus. by York Wilson for Can. Home Journal 1949-50'  
 Ref: see *Four Decades, The Canadian Group of Painters*, by Paul Duval, pg.70 and 121 for two examples of the artist's work in the 1940's and 50's  
 ESTIMATE: 600/800

### FANNY WISELBERG

[1906-1986] Canadian  
 exhibited with Contemporary Arts Society, Montreal from 1942-48; see *Jewish Painters and Modernity, Montreal, 1930-1945*, by E.Trepanier, pg.171, Centre Saidye-Bronfman, Montreal, 1987; exhibition list in *M.M.F.A.*, by E.McMann, pg.404

**316** ERNEST NEUMAN IN HIS STUDIO  
 oil on paper board  
 24 x 19.75 in. / 61 x 50 cm.  
 signed lower left; signed and titled verso  
 ESTIMATE: 3,000/4,000

**ROSE WISELBERG**

[1908-1992] Canadian  
see *Jewish Painters and Modernity, Montreal, 1930-1945*, by E.Trepanier, pg.171, Centre Saidye-Bronfman, Montreal, 1987; exhibition list in *M.M.F.A.*, by E.McMann, pg.405

**317** UNTITLED — MAN READING A BOOK  
oil on paper board  
8.5 x 6 in. / 22 x 15 cm.  
signed lower left  
ESTIMATE: 700/900

**318** NUDE  
charcoal on paper  
12 x 8.5 in. / 30 x 22 cm.  
signed lower right; some handling marks in margin  
Prov: Collector's Gallery, Calgary, label verso  
ESTIMATE: 700/900

**FLORENCE WOODMAN**

[ac.1902-06] Canadian  
exhibition list in *R.C.A.A.*, by E.McMann, pg.436 and *M.M.F.A.*, by E.McMann, pg.407

**319** ROSES  
oil on canvas  
21.75 x 30 in. / 55 x 76 cm.  
signed lower right  
Prov: O.B. Graves Picture Store, London, Ont. label verso  
ESTIMATE: 2,000/3,000

**MARY EVELYN WRINCH**

C.P.E., O.S.A., R.C.A.  
[1877-1969] Canadian  
see *R.C.A.A.*, by E.McMann, pg.436 for exhibition list and *The Society of Canadian Painter-Etchers and Engravers in Retrospect*, by A.Oko, pg.78, Art Gallery of Hamilton, 1981 and *N.G.C. Vol.III*, by R.Hubbard, pg.336; *M.M.F.A.*, by E.McMann, pg.408 for exhibition list

**320** DELPHINIUM AND DAISIES  
colour woodblock on paper  
9.25 x 6.75 in. / 23 x 17 cm.  
signed and titled along bottom; laid down on mat board  
ESTIMATE: 600/800

**JOHN CRAWFORD YOUNG**

[ac.1825-36] Canadian  
biography in *E.P.E.C.*, by R.Harper, pg.341; biography and another example in *Canadian Watercolours and Drawings in the Royal Ontario Museum*, by M.Allodi, attached verso; the artist came to Canada in 1825 and was posted to Montreal in 1828

**321** CANADIAN HABITANTS, QUEBEC  
watercolour on paper  
8.25 x 5.5 in. / 21 x 14 cm. Dated ca. 1828  
bears title along bottom; archival mat  
Ref: biography from *Canadian Watercolours and Drawings in the Royal Ontario Museum*, by M.Allodi, attached verso  
Prov: Masters Gallery, Calgary, label verso  
ESTIMATE: 800/1,000

**LUCIENNE BOUCHER ZEGRAY**

20th century Canadian  
biography in *Guide Vallee, III Edition*, by F.Vallee, pg.1104, pub. Le Guide Vallee, 1992

**322** FIRST SNOW, RUE ST. URSULE, QUE.  
oil pastel on paper  
15 x 12 in. / 38 x 30 cm. Dated: 1996  
signed lower left; signed, titled and dated on label verso  
ESTIMATE: 700/800

**323** PETUNIAS  
oil pastel on paper  
10 x 8 in. / 25 x 20 cm. Dated: 1996  
signed lower right; signed, titled and dated on label verso  
ESTIMATE: 450/550

**Thank you for attending.**

Clients are reminded that the Next Auction is scheduled for NOVEMBER 3 & 4, 1997. Please contact the office early regarding consignments or if there are particular artists you are looking for.



**SUNDAY MAY 4<sup>TH</sup> AT 4:00 P.M.  
SILENT AUCTION, LOT #401 – 492**

**PLEASE NOTE**

*Due to the enthusiasm of some of our clients and the rush to be the last name on the bidding sheet, the silent auction has changed. Clients are invited to bid on the silent auction sheets up to 4:00 P.M. on SUNDAY, MAY 4. At that time, LEVIS will accept any verbal bids higher than what has been offered. This highest bidder will be deemed the purchaser of the lot.*

**Buyer's Premium:** a Premium of 10% will be added to the Hammer Price of all property sold. The Premium is payable by all purchasers. **Goods and Services Tax:** G.S.T. of 7% will be charged on the total of the Hammer Price and on the Buyer's Premium.

*Additional notes may be found at the front of the catalogue for prospective buyers.*

**CAVEN ATKINS**

C.G.P., C.S.G.A., C.S.P.W.C., F.C.A.

[b.1907] Canadian

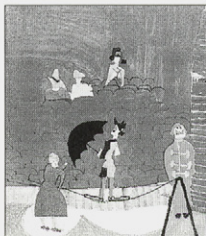
see *Caven Atkins, The Winnipeg Years*, by T.Fraser, Art Gallery of Windsor, 1987; biography and other examples in *A.G.O.*, by the A.G.O., pg.9; exhibition list in *M.M.F.A.*, by E.McMann, pg.12; biography in *Dict. of Canadian Artists*, by C.MacDonald, Vol.1, pg.18

- 401** TREE GROUP #14/26  
woodblock on paper  
10 x 12 in. / 25 x 30 cm. Dated: 1934  
signed, titled, dated and numbered along bottom;  
archival mat  
Ref: illustrated and included in *Caven Atkins,  
the Winnipeg Years*, cat.#63  
ESTIMATE: \$200/300

**MAXWELL BENNETT BATES**

[see biography Lot #15]

- 402** CIRQUE MEDRANO, PARIS #31/50  
colour lithograph on paper  
17.75 x 13.75 in. / 45 x 35 cm. Dated: 1966  
signed, titled, dated and numbered along bottom;  
minor handling mark in margin  
Ref: see *Maxwell Bates, Portrait of an Artist*, by K.Snow,  
pg.113 regarding trip the artist made to Europe  
and his source for this trip  
Prov: Dufour & Pelland Pictures, Montreal, label verso  
ESTIMATE: 300/400



- 403** UNTITLED – CANDLE  
relief print on coloured paper  
3.75 x 3.25 in. / 10 x 8 cm.  
4 x 3.5 in. / 10 x 9 cm. — Paper Size  
signed and inscribed Christmas card  
Prov: private collection, Calgary  
ESTIMATE: 75/100

- 404** PROSPERITY, HAPPINESS, LONG LIFE  
relief print on coloured paper  
5 x 1.25 in. / 13 x 3 cm.  
5 x 1.25 in. / 13 x 3 cm. — Paper Size  
signed and inscribed Christmas card  
Prov: private collection, Calgary  
ESTIMATE: 75/100

- 405** UNTITLED – CANDLE AND GLASS  
relief print on coloured paper  
6 x 4.75 in. / 15 x 12 cm.  
6 x 5 in. / 15 x 13 cm. — Paper Size  
signed and inscribed Christmas card  
Prov: private collection, Calgary  
ESTIMATE: 75/100

- 406** UNTITLED – OWL AND CHURCH STEEPLE  
relief print on coloured paper  
3.25 x 3.75 in. / 8 x 10 cm.  
3.25 x 3.75 in. / 8 x 10 cm. — Paper Size  
signed and inscribed Christmas card  
Prov: private collection, Calgary  
ESTIMATE: 75/100

**TERRY A. BENNETT**

20th century Canadian

- 407** SEVENTEEN PUFFINS  
watercolour on paper  
11 x 26 in. / 28 x 66 cm.  
signed with monogram lower right;  
bears title on label verso  
Prov: private collection, Calgary;  
Masters Gallery, Calgary, label verso  
ESTIMATE: 400/500

**BRUNO & MOLLY BOBAK**

[see biographies Lot #31 and #32]

- 408** GROUP OF NINE SILKSCREEN PRINTS  
silkscreen on paper  
various sizes  
17 x 22 in. / 43 x 56 cm. — Paper Size  
all signed, some titled, numbered and inscribed;  
1 by Molly Lamb Bobak and 8 by Bruno Bobak; unframed  
**LOT OF NINE** – ESTIMATE: 200/300

**HENDRIK BRES**

A.S.A.

[b.1932] Canadian

see *Hendrik Bres*, by the E.A.G., 1977 and *Spaces and Places*, by J.Ironside, pg.72 for biography and another example of the artist's work in the collection of the A.A.F.

**HENDRIK BRES continued**

**409** WILLOWS AND OTHER GROWTH ON THE LOBSTICK  
acrylic on masonite  
12 x 16 in. / 30 x 41 cm. Dated: 1979  
signed and dated lower right; titled verso  
ESTIMATE: 200/300

**410** UNTITLED — LANDSCAPE WITH STREAM  
acrylic on masonite  
12 x 15.75 in. / 30 x 40 cm. Dated: 1979  
signed and dated lower left; signed and dated verso  
Prov: E.A.G. Art Rental label verso  
ESTIMATE: 200/300

**411** LANDSDOWN RIDGE  
acrylic on masonite  
10 x 12 in. / 25 x 30 cm. Dated: 1982  
signed and dated lower right;  
signed, titled and dated verso  
ESTIMATE: 200/300

**412** WATERHOLE AT MACKAY  
acrylic on masonite  
10 x 12 in. / 25 x 30 cm. Dated: 1981  
signed and dated lower right;  
signed, titled and dated verso  
ESTIMATE: 200/300

**SERGE BRUNONI**

[b.1938] Canadian  
biography in *Guide Vallee, III Edition*, by  
F.Vallee, pg.262, pub. Le Guide Vallee, 1992

**413** MONTREAL, RUE NOTRE DAME STREET  
graphite on paper  
10.5 x 13.5 in. / 27 x 34 cm.  
signed lower right; titled lower left  
ESTIMATE: 250/350

**ROBERT BUTLER**

20th century N.American

**414** UNTITLED — YELLOW BREASTED BIRD ON BRANCH  
watercolour on paper  
13.25 x 10 in. / 34 x 25 cm. Dated: 1976  
signed and dated lower left  
Prov: private collection, Victoria;  
Downtown Gallery, Victoria, stamp verso  
ESTIMATE: 400/500

**ALFRED JOSEPH CASSON**

[see biography Lot #41]

**415** WINTER BERRIES  
silkscreen on wood veneer  
9 x 12 in. / 23 x 30 cm. Dated: ca. 1920  
signed in screen lower left  
ESTIMATE: 300/500

**ALBERT EDWARD CLOUTIER**

C.S.P.W.C., R.C.A.

[1902-1965] Canadian  
biography and another example in *N.G.C., Vol.III*, by R.Hubbard, pg.55; exhibition list in *R.C.A.A.*, by E.McMann, pg.75 and *M.M.F.A.*, by E.McMann, pg.72; biography in *Dict. of Canadian Artists — Vol.1*, by C.MacDonald, pg.132

**416** BOILING MAPLE SAP #58/200  
silkscreen on paper  
10 x 8 in. / 25 x 20 cm.  
12.25 x 9.25 in. / 31 x 23 cm. — Paper Size  
signed, titled and numbered along bottom  
ESTIMATE: 100/150

**417** MAKING SOAP #70/200  
silkscreen on paper  
10 x 8 in. / 25 x 20 cm.  
12.25 x 9.25 in. / 31 x 23 cm. — Paper Size  
signed, titled and numbered along bottom  
ESTIMATE: 100/150

**NORMAN W. DEER**

[ca.1931] Canadian

**418** UNTITLED — WINDBLOWN ISLANDS  
oil on canvas  
18 x 24 in. / 46 x 61 cm. Dated: 1942  
signed and dated lower right  
ESTIMATE: 200/300





**KERR EBY**

[1850-1934]

- 4** WHITE WATER  
etching on paper  
**1** 8.75 x 14.25 in. / 22 x 36 cm. Dated: 1929  
**9** 13 x 18 in. / 33 x 46 cm. — Paper Size  
signed and inscribed 'ed.90' along bottom;  
bears title in margin; archival mat front and back;  
unframed  
ESTIMATE: 250/350

**NICOLAS MATHIEU EEKMAN**

[1889-1973] European

- 4** UNTITLED — TWO FIGURES WALKING  
**2** woodblock on paper  
**0** 9 x 5 in. / 23 x 13 cm.  
signed below image; original mat attached verso;  
archival mat  
ESTIMATE: 200/300

**JOHN KENNETH ESLER**

A.S.A., C.S.G.A., C.P.E., M.S.A., R.C.A.

[b.1933] Canadian

see *Founders of the A.C.A.*, by V.Greenfield, pg.80 and *Printmaking in Alberta 1945-1985*, by B.Cochran, pg.66 as well as *N.G.C. Vol.1, A-F*, ed.C.Hill, pg.300; *Artists of Alberta*, by S.Baker, pg.53, University of Alberta Press, 1980; *Dict. of Canadian Artists — Vol.1*, by C.MacDonald, pg.192

- 4** CENTURY PULL [CANADIAN] #1/35  
**2** colour etching and relief on paper  
**1** 21.75 x 17 in. / 55 x 43 cm. Dated: 1966  
signed, titled, dated and numbered along bottom  
Ref: listed in *35 Years and 15 Minutes*, pg.57, ed:35  
Prov: corporate collection, Calgary  
ESTIMATE: 100/150

- 4** MEDALLION #A.P.  
**2** colour collagraph on paper  
**2** 17 x 16 in. / 43 x 41 cm. Dated: 1969  
signed, titled, dated and numbered along bottom  
Ref: listed in *35 Years and 15 Minutes*, pg.58, ed:25  
Prov: corporate collection, Calgary  
ESTIMATE: 100/150

- 4** MEDALLION #3 #4/25  
**2** colour collagraph on paper  
**3** 18 x 16.5 in. / 46 x 42 cm. Dated: 1969  
signed, titled, dated and numbered along bottom  
Ref: listed in *35 Years and 15 Minutes*, pg.58  
Prov: corporate collection, Calgary  
ESTIMATE: 100/150

**MEREDITH EVANS**

[b.1919] Canadian

listed in *Artists in Canada — Union List*, National Gallery of Canada Library, pg.216, N.G.C., 1988

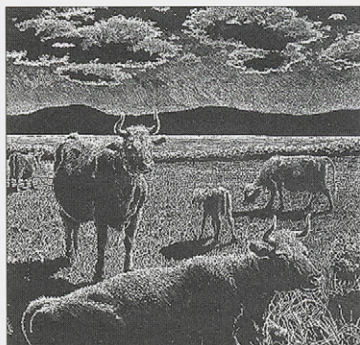
- 4** AT THE GOVERNMENT DAM, MILL CREEK,  
**2** 1927 SKINNY DIPPING  
**4** watercolour on paper  
5.75 x 7.75 in. / 15 x 20 cm. Dated: 1983  
signed and dated lower right; titled on paper verso  
Prov: private collection, Calgary  
ESTIMATE: 150/200

**JOSEPH [JOE] FAFARD**

[b.1942] Canadian

see *Saskatchewan: Art and Artists*, by Norman MacKenzie Art Gallery, pg.29 for biography and *Visions, Contemporary Art in Canada*, ed.R.Keziere, pg.128 and *N.G.C. Vol.1, A-F*, ed.C.Hill, pg.304; biography in *Biographical Dict. of Saskatchewan Artists — Men*, by M.Newman, pg.86; major exhibition of her work currently on show at the Montreal Museum of Fine Art

- 4** MOON WALK #11/20  
**2** etching on paper  
**5** 11.5 x 11.5 in. / 29 x 29 cm. Dated: 1987  
signed, titled, dated and numbered along bottom;  
archival mat  
Prov: private collection, Calgary  
ESTIMATE: 300/400




**HORTENSE CROMPTON  
MATTICE GORDON**

C.S.G.A., R.C.A.

[1889-1961] Canadian

biography and other examples in *A.G.O.*, by the A.G.O. pg.141; *Dict. of Canadian Artists — Vol.2*, by C.MacDonald, pg.294; member of the Painters Eleven; biography and other examples in *N.G.C. Vol.2, G-K*, ed.C.Hill, pg.48

**4**  
**2**  
**6** UNTITLED — COMING TOWARDS THE HORIZON  
watercolour on paper  
8 x 6.5 in. / 20 x 17 cm.  
signed with studio stamp lower right; archival mat  
Prov: purchased from the estate of the artist  
ESTIMATE: 350/450

**4**  
**2**  
**7** UNTITLED — THE MARSH  
watercolour on paper  
7.75 x 11.75 in. / 20 x 30 cm.  
signed with studio stamp lower left; archival mat  
ESTIMATE: 250/350

**JOHN SLOAN GORDON**

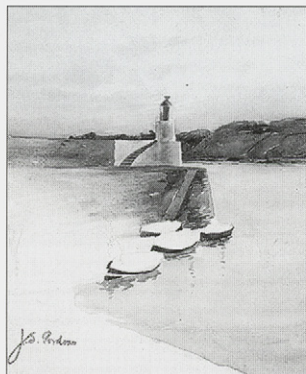
O.S.A., R.C.A.

[1868-1940] Canadian

biography and other examples in *N.G.C. Vol.2, G-K*, ed.C.Hill, pg.49; exhibition list in *M.M.F.A.*, by E.McMann, pg.149 and *R.C.A.A.*, by E.McMann, pg.153

**4**  
**2**  
**8** FIRST SNOW  
oil on canvas board  
10 x 7.75 in. / 25 x 20 cm.  
signed with studio stamp lower right;  
signed with initials and bears title verso  
ESTIMATE: 350/450

**4**  
**2**  
**9** UNTITLED — THE LIGHT HOUSE  
watercolour on paper  
11 x 7.75 in. / 28 x 20 cm.  
signed with studio stamp lower left; archival mat  
Prov: purchased from the estate of the artist  
ESTIMATE: 250/350



**4**  
**3**  
**0** UNTITLED — THE DOCK  
graphite on paper  
11 x 7.75 in. / 28 x 20 cm.  
signed with studio stamp lower left; archival mat  
Prov: purchased from the estate of the artist  
ESTIMATE: 200/300

**4**  
**3**  
**1** UNTITLED — LADY SKETCHING  
graphite on paper  
5.25 x 6.25 in. / 13 x 16 cm.  
signed with studio stamp lower right; archival mat  
Prov: purchased from the estate of the artist  
ESTIMATE: 150/250

**THOMAS GARLAND GREENE**

C.P.E., C.S.G.A., C.S.P.W.C., O.S.A.

[1875-1955] Canadian

biography and other examples in *N.G.C. Vol.2, G-K*, ed.C.Hill, pg.56 and *A.G.O.*, by the A.G.O., pg.144; exhibition list in *R.C.A.A.*, by E.McMann, pg.157; founding member of the C.S.P.W.C.; *Robson*, pg.126; *Colgate*, pg.66

**4**  
**3**  
**2** CAP TOURMENT, P.O.  
pencil on paper  
4.5 x 7.5 in. / 11 x 19 cm.  
titled lower left; archival mat  
ESTIMATE: 250/300

**JACK W. HARDCASTLE**

[1888-1973] Canadian

biography in *Dict. of Canadian Artists — Vol.2*, by C.MacDonald, pg.365

**4**  
**3**  
**3** HAROLD, 1860  
watercolour on paper  
5 x 8.25 in. / 13 x 21 cm. Dated: 1967  
signed and dated lower right; titled on paper verso  
ESTIMATE: 250/350

**4**  
**3**  
**4** CANADIAN DOWNCASTER, 'SUNDA', 1865  
watercolour on paper  
5.25 x 8.25 in. / 13 x 21 cm. Dated: 1967  
signed and dated lower right; titled on paper verso  
ESTIMATE: 250/350

**WILLIAM GARNET HAZARD**

C.P.E.

[b.1903 Canadian biography in *Dict. of Canadian Artists — Vol.2*, by C.MacDonald, pg.400 and *Biographical Dict. of Saskatchewan artists — Men Artist*, by M.Newman, pg.112

**4** QU'APPELLE VALLEY

etching on paper

4.25 x 5.5 in. / 11 x 14 cm.

6.25 x 9.25 in. / 16 x 23 cm. — Paper Size

signed and titled along bottom;  
archival mat front and back; unframed  
ESTIMATE: 300/400

**4** SANCTUARY LAKE

etching on paper

4.25 x 5.5 in. / 11 x 14 cm.

6.25 x 8 in. / 16 x 20 cm. — Paper Size

signed and titled along bottom;  
archival mat front and back; unframed  
ESTIMATE: 300/400

**CHARLES HEINE**

20th century Canadian

the artist has taught at the Alberta College of Art, Calgary

**4** SNOW ON THE MOUNTAIN —  
**3** UNDER MY BIRCH TREE #1/8

etching on paper

17.5 x 5.75 in. / 44 x 15 cm. Dated: 1990

signed, titled, dated and numbered along bottom;  
archival mat; print information verso  
ESTIMATE: 200/300

**EDWIN HEADLEY HOLGATE**

[see biography Lot #97]

**4** THE PLOUGH

woodblock on paper

5 x 3.75 in. / 13 x 10 cm. Dated: 1927

signed with initials in block lower right; in two colours

Ref: frontispiece for *Other Days Other Ways*, by G.Bouchard; see *The Prints of Edwin Holgate*, cat.#30 and *Images of the Land, 1919-1945*, by P.Ainslie, cat. #87 in illustrated pg.135  
ESTIMATE: 200/250

**4** THE BLACKSMITH

woodblock on paper

3.25 x 3.75 in. / 8 x 10 cm. Dated: 1927

signed with initials in block upper right

Ref: illustration for *Other Days Other Ways*, by G.Bouchard; see *The Prints of Edwin Holgate*, cat.#33  
ESTIMATE: 200/250

**4** THE OLD LOOM

woodblock on paper

4 x 3.75 in. / 10 x 10 cm. Dated: 1927

signed with initials in block lower left

Ref: illustration for *Other Days Other Ways*, by G.Bouchard; see *The Prints of Edwin Holgate*, cat.#32  
ESTIMATE: 200/250

**4** TWO CHRISTMAS CARDS

woodblock on paper

various sizes

printed Christmas cards; unframed

Ref: three images used in *Other Days, Other Was*, written by G.Bouchard and used as Christmas cards

**LOT OF TWO** — ESTIMATE: 100/150**RAMSEY MCGREGOR HONE**

[b.1920] Canadian

biography and example in *The White Line — Wood Engraving in Canada since 1945*, by G.Brender a Brandis, pg.81, The Porcupine's Quill Inc. 1990; *McGregor Hone: Block Prints*, by V.Ebbels, Dunlop Art Gallery, 1985; *Dict. of Canadian Artists — Vol.2*, by C.MacDonald, pg.461

**4** ITALIAN FARM

woodblock on paper

10.25 x 24 in. / 26 x 61 cm.

signed lower right, titled lower left; archival mat

ESTIMATE: 250/350



**NICHOLAS HORNANSKY**

C.P.E., C.S.G.A., O.S.A., A.R.C.A.

[1898-1965] Canadian

biography and other examples in *N.G.C. Vol.2, G-K*, ed.C.Hill, pg.149; *A.G.O.*, by the A.G.O., pg.195; *R.C.A.A.*, by E.McMann, pg.194 and *M.M.F.A.*, by E.McMann, pg.180; *A Dict. of Canadian Artists - Vol.2*, by C.MacDonald, pg.470 for biography

**4** BRIDAL VEIL, BALLS FALLS  
**4** coloured etching on paper  
**3** 4.5 x 5.5 in. / 11 x 14 cm.  
 signed and titled along bottom;  
 with printed write up attached verso  
 ESTIMATE: 200/250

**4** HOUSE OF THE COLONIAL ADVOCATE  
**4** coloured etching on paper  
**4** 4.25 x 5.5 in. / 11 x 14 cm.  
 signed and titled along bottom;  
 with printed write up attached verso  
 ESTIMATE: 200/250

**JAMES ARCHIBALD HOUSTON**

[b.1921] Canadian

see *Dict. of Canadian Artists — Vol.2*, by C.MacDonald, pg.474 for biography

**4** UNTITLED — ESKIMO MOTHER  
**4** watercolour on paper  
**5** 16.5 x 10.75 in. / 42 x 27 cm.  
 signed lower left  
 Prov: Rolland Picture Frame, Montreal, label verso  
 ESTIMATE: 300/500

**DAVID HOWELL**

20th century Canadian

**4** BY THE BAY  
**4** oil on canvas  
**6** 10 x 8 in. / 25 x 20 cm. Dated: 1996  
 signed lower left; signed, titled and dated verso  
 ESTIMATE: 250/300

**JOHN GEORGE JENKINS**

[b.1920] Canadian

biography in *Dict. of Canadian Artists — Vol.3*, by C.MacDonald, pg.557 and *Biographical Dict. of Saskatchewan Artists — Men Artists*, by M.Newman, pg.128

**4** UNTITLED — PRAIRIE FIELD  
**4** acrylic on masonite  
**7** 11 x 14 in. / 28 x 36 cm. Dated: 1969  
 signed and dated lower right  
 Prov: private estate, Saskatchewan  
 ESTIMATE: 400/500

**FREDERIC WAISTELL JOPLING**

C.P.E.

[1859-1945] Canadian

biography in *A.G.O.*, by the A.G.O., pg.224 and *E.P.E.C.*, by R.Harper, pg.176; exhibition list in *R.C.A.A.*, by E.McMann, pg.215; included in the recent *A New Class of Art, the Artist's Print in Canadian Art 1877-1920*, by R.Tovell, N.G.C., 1996

**4** BACK TO ATLANTIC OCEAN  
**4** etching on paper  
**8** 7 x 4.5 in. / 18 x 11 cm.  
 11.25 x 8.5 in. / 29 x 22 cm. — Paper Size  
 signed in plate lower centre; signed and titled along bottom; archival mat front and back; unframed  
 Ref: inscribed verso 'Their Majesty Train going back to Halifax from the Pacific Coast' [?]  
 ESTIMATE: 150/200

**ILLINGWORTH HOLEY KERR**

[see biography Lot #115]

**4** TEXACO CORNER  
**4** ink on paper  
**9** 10.25 x 13.75 in. / 26 x 35 cm. Dated: 1968  
 signed with monogram lower right;  
 inscribed with colour notations;  
 signed, titled, dated and inscribed verso; archival mat  
 Prov: Gold Design Fine Arts, Calgary, label verso  
 ESTIMATE: 300/400

**4** MULE DEER #A.P.  
**5** linoblock print on paper  
**0** 9 x 6.5 in. / 23 x 17 cm.  
 signed, titled and numbered along bottom  
 Prov: Lando Fine Art, Edmonton, stamp verso  
 ESTIMATE: 100/150

**4** COSI CAT #A.P.  
**5** linoblock print on paper  
**1** 7 x 8.5 in. / 18 x 22 cm.  
 signed, titled and numbered along bottom  
 Prov: Lando Fine Art, Edmonton, stamp verso  
 ESTIMATE: 100/150

**HARRY MITSUO KIYOOKA**

A.S.A., R.C.A.

[b.1928] Canadian

biography and another example in *The Shell Canada Collection*, by B.Shammas, Shell Oil, 1977; *Dict. of Canadian Artists — Vol.3*, by C.MacDonald, pg.649; *Artists of Alberta*, by S.Baker, pg.90, U. of A. Press, 1980

**4** TRIPLE PLAY #A.P.  
**5** silkscreen on paper  
**2** 18 x 18 in. / 46 x 46 cm.  
 signed, titled and numbered along bottom  
 Prov: corporate collection, Calgary  
 ESTIMATE: 100/150


**[ATTRIBUTED TO] FRANK FRANTISEK  
KUPKA**

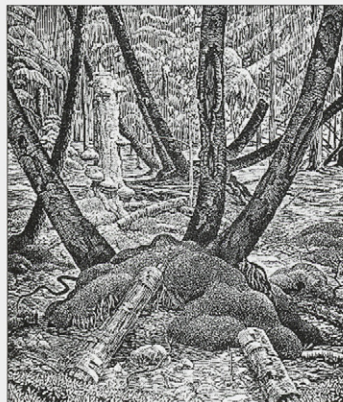
[1871-1957] Czech.

- 4** TREE STUDY  
oil on paper board  
9 x 6 in. / 23 x 15 cm.  
label bears artist's name and title verso  
Prov: private collection, Calgary  
ESTIMATE: 300/400

**ERNEST LINDNER**

[see biography Lot #138]

- 4** FOREST #10/40  
linoblock on paper  
14 x 11.5 in. / 36 x 29 cm. Dated: 1940  
17.5 x 15 in. / 44 x 38 cm. — Paper Size  
signed with initials in block lower right; bears title and  
numbered along bottom; embossed chop in block lower  
right; archival mat front and back; unframed  
Ref: print originally printed in 1940 and reprinted with  
the consent of the estate in 1990 in an edition of 42;  
letter of authenticity signed by Robert Duncan Christie;  
reproduced pg.142 in *Images of the Land, 1919-1945*,  
by P.Ainslie, cat. #111  
ESTIMATE: 400/500



- 4** RIVER VALLEY #10/20  
etching on paper  
7.25 x 10 in. / 18 x 25 cm.  
15 x 17.5 in. / 38 x 44 cm. — Paper Size  
bears title and numbered along bottom;  
embossed chop in block lower right;  
archival mat front and back; unframed  
Ref: print originally printed much earlier in artist's  
career and reprinted with the consent of the estate  
in 1990 in an edition of 22; letter of authenticity  
signed by Robert Duncan Christie  
ESTIMATE: 200/300

- 4** WINTER NIGHT ON THE PRAIRIE #10/20  
etching on paper  
9 x 7.5 in. / 23 x 19 cm. Dated: 1960  
17.5 x 15 in. / 44 x 38 cm. — Paper Size  
bears title and numbered along bottom;  
embossed chop in block lower right;  
archival mat front and back; unframed  
Ref: print originally printed much earlier in artist's career  
and reprinted with the consent of the estate in 1990  
in an edition of 22; letter of authenticity signed  
by Robert Duncan Christie  
ESTIMATE: 200/300

- 4** SASKATOON #10/20  
etching on paper  
4 x 6.25 in. / 10 x 16 cm. Dated: 1960  
15 x 17.5 in. / 38 x 44 cm. — Paper Size  
bears title and numbered along bottom;  
embossed chop in block lower right;  
archival mat front and back; unframed  
Ref: print originally printed much earlier in artist's career  
and reprinted with the consent of the estate in 1990  
in an edition of 22; letter of authenticity signed  
by Robert Duncan Christie  
ESTIMATE: 150/200

- 4** SUNFLOWER #10/20  
etching on paper  
7.75 x 8.75 in. / 20 x 22 cm.  
15 x 17.5 in. / 38 x 44 cm. — Paper Size  
signed in plate lower right; bears title and numbered  
along bottom; embossed chop in block lower right;  
archival mat front and back; unframed  
Ref: print originally printed much earlier in artist's career  
and reprinted with the consent of the estate in 1990  
in an edition of 22; letter of authenticity signed  
by Robert Duncan Christie  
ESTIMATE: 150/200

- 4** NO LOT  
**5**

**M.P. MACDONALD**

20th century Canadian

- 460** THE THREE SISTERS, CANMORE  
etching on paper  
6.5 x 7.25 in. / 17 x 18 cm.  
10.5 x 10.25 in. / 27 x 26 cm. — Paper Size  
signed and titled along bottom; unframed

**TOGETHER WITH**

UNTITLED — MOUNTAINOUS SCENE WITH  
ELK IN FOREGROUND

- etching on paper  
2.25 x 2.75 in. / 6 x 7 cm.  
7.25 x 7 in. / 18 x 18 cm. — Paper Size  
signed along bottom; unframed

**TOGETHER WITH**

UNTITLED — SAILING SHIP

- etching on paper  
3.5 x 7.75 in. / 9 x 20 cm.  
7.5 x 11 in. / 19 x 28 cm. — Paper Size  
signed along bottom; glue stains in margin; unframed

**LOT OF TWO ESTIMATE: 200/300**

**DONALD SHAW MACLAUGHLIN**

[1876-1938] Canadian

included in *A New Class of Art, the Artist's Print in Canadian Art 1877-1920*, by R.Tovell, pg. 48, N.G.C., 1996; biography in *Dict. of Canadian Artists — Vol.4*, by C.MacDonald, pg.1057

- 461** UNTITLED — ENTRANCE TO THE PASTURE  
etching on paper  
7 x 9 in. / 18 x 23 cm. Dated: 1919  
signed and dated in plate lower right; indistinctly titled,  
dated and inscribed "R.240" along bottom; archival mat  
ESTIMATE: 250/350

**MCINTOSH**

20th century

- 462** UNTITLED — BOATS  
watercolour on paper  
9.5 x 8.25 in. / 24 x 21 cm.  
signed lower right; laid down on paper board  
Prov: Antiques Dexter, Montreal, label verso;  
private collection, Calgary  
ESTIMATE: 200/300

**LEONHARD J. MEISSNER**

[1902-1977] European

- 463** AT HOME #11/30  
linoblock on paper  
9.25 x 7.75 in. / 23 x 20 cm. Dated: 1926  
11.75 x 9.5 in. / 30 x 24 cm. — Paper Size  
signed, titled, dated and numbered along bottom;  
glue stains in margin; archival mat front and back;  
unframed  
ESTIMATE: 250/350

**ANNA T. NOEH**

[b.1926] Canadian

biography and another example in *Guide Vallee, III Edition*, by F.Vallee, pg.832; biography in *Dict. of Canadian Artists — Vol.5*, by C.MacDonald, pg.1394

- 464** THE FIRST SNOW IN ARCTIC BAY #16/100  
silkscreen on paper  
16 x 20 in. / 41 x 51 cm. Dated: 1983  
signed, titled, dated and numbered along bottom;  
archival mat  
Prov: Montreal Museum of Fine Art, Art Rental Gallery  
and Dominion Gallery, Montreal, label verso  
ESTIMATE: 150/200

**TONI ONLEY**

[see biography Lot #238]

- 465** CLOUD / VOLCANO SUITE #46/58  
silkscreen on paper  
11 x 14.75 in. / 28 x 37 cm.  
signed, titled and numbered along bottom; archival mat  
Prov: West End Gallery, Edmonton, label verso  
ESTIMATE: 150/200

**FREDA PEMBERTON-SMITH**

C.S.P.W.C.

[1902-1991] Canadian

see *R.C.A.A.*, by E.McMann, pg.379, for exhibition list and *Dict. of Canadian Artists — Vol.5*, by C.MacDonald, pg.1582 for biography; *M.M.F.A.*, by E.McMann, pg.357

- 466** UNTITLED — HORSES  
pastel on paper  
11 x 16.75 in. / 28 x 43 cm.  
signed lower right; archival mat  
ESTIMATE: 550/650

**ROBERT WAKEHAM PILOT**

R.C.A.

[1898-1967] Canadian

see *A.G.O.*, by the A.G.O., pg.378; *N.G.C. Vol.III*, by R.Hubbard, pg. 249; *Dict. of Canadian Artists — Vol.6*, by C.MacDonald, pg.1702 for biography

- 4** UNTITLED — QUEBEC SCENE IN SNOW  
**6** silkscreen on paper  
**7** 15.25 x 19.5 in. / 39 x 50 cm.  
 20 x 23.75 in. / 51 x 60 cm. — Paper Size  
 signed lower right  
 ESTIMATE: 100/150

**WINIFRED POLLEY**

20th century Canadian

the artist was married to Nicholas Hornyansky  
 [1898-1965]

- 4** IN THE NARROW #2/50  
**6** woodblock on tissue  
**8** 11.5 x 11 in. / 29 x 28 cm.  
 signed, titled and numbered along bottom;  
 some handling marks; archival mat  
 ESTIMATE: 200/250

**FERNANDE PRATTE**

[b.1938] Canadian

biography in *Dict. of Canadian Artists — Vol.6*,  
 by C.MacDonald, pg.1825

- 4** LE MUR  
**6** acrylic on canvas  
**9** 20 x 20 in. / 51 x 51 cm. Dated: 1972  
 signed and dated lower left; titled verso  
 Prov: private collection, Calgary  
 ESTIMATE: 250/350

**ROD PROUSE**

[ca.1945] Canadian

biography in *Dict. of Canadian Artists — Vol.6*,  
 by C.MacDonald, pg.1867

- 4** BOATS AND SNOW  
**7** photo-mechanical reproduction on paper  
**0** 6.5 x 8.5 in. / 17 x 22 cm.  
 signed and titled in plate along bottom;  
 signed and inscribed on card attached verso; archival mat  
 ESTIMATE: 150/250

**CLIFFORD FEARD ROBINSON**

A.S.A., C.S.G.A., F.C.A.

[1917-1992] Canadian

see *Printmaking in Alberta 1945-1985*, by B.Cochran, pg.119; *Images of the Land, 1919-1945*, by P.Ainslie, pg.93; *The Society of Canadian Painter-Etchers and Engravers in Retrospect*, by A.Oko, pg.76, Art Gallery of Hamilton, 1981; included in *Jubilee Exhibition of Alberta Paintings*, by J.Nicoll, pg.27, Calgary Allied Art Centre, 1955

- 4** CULT B#1/10  
**7** woodblock on paper  
**1** 13.25 x 16.5 in. / 34 x 42 cm.  
 signed with monogram in block lower left; signed,  
 titled and numbered along bottom; archival mat  
 Ref: possibly a second printing  
 ESTIMATE: 300/400



- 4** FARM #3/20  
**7** woodblock on paper  
**2** 4 x 4.25 in. / 10 x 11 cm.  
 4.75 x 5.5 in. / 12 x 14 cm. — Paper Size  
 signed, titled and numbered along bottom;  
 paper imperfection in margin upper left;  
 archival mat front and back; unframed  
 Ref: illustrated *Images of the Land*, cat. #143, pg.150  
 ESTIMATE: 300/400



- 4** UNTITLED — FIGURES  
**7** ink on paper  
**3** 9 x 11.25 in. / 23 x 29 cm. Dated: 1954  
 signed and dated lower left; unframed  
 Prov: purchased from the artist  
 ESTIMATE: 150/250

- 4** TWO DANCERS, SAN FRANCISCO  
**7** ink on paper  
**4** 12.5 x 9 in. / 32 x 23 cm. Dated: 1950  
 signed with initials lower right;  
 titled and dated upper left; unframed  
 Prov: purchased from the artist  
 ESTIMATE: 150/250

**SUSAN ANDRINA ROSS**

[b.1915] Canadian  
biography in *Dict. of Canadian Artists — Vol.7*,  
by C.MacDonald, pg.2303

- 4**  
**7**  
**5** WOMAN SEWING  
graphite on paper  
7 x 9.5 in. / 18 x 24 cm. Dated: 1968  
signed lower right; bears title and date verso;  
framed in oval  
Prov: private collection, Winnipeg  
ESTIMATE: 200/300

**AMERICAN SCHOOL**

- 4**  
**7**  
**6** UNTITLED — STUDY OF A WOMAN  
chalk on paper  
8.5 x 7.75 in. / 22 x 20 cm.  
signed indistinctly with initials lower left  
ESTIMATE: 200/300

- 4**  
**7**  
**7** PORPHYRITIC STATUE PELONCILLO RANGE  
hand coloured engraving on paper  
5.75 x 8.5 in. / 15 x 22 cm.  
8.25 x 11 in. / 21 x 28 cm. — Paper Size  
printed titled along bottom; U.S.P.R.R. Exp. & Surveys —  
Cal. printed along upper edge; some foxing; unframed  
**TOGETHER WITH**  
U.S. MILITARY POST, BENICIA  
hand coloured engraving on paper  
5.75 x 8.5 in. / 15 x 22 cm.  
8.25 x 11 in. / 21 x 28 cm. — Paper Size  
printed titled along bottom; U.S.P.R.R. Exp. & Surveys —  
Cal. printed along upper edge; some foxing; unframed  
**LOT OF TWO** ESTIMATE: 75/150

**CANADIAN SCHOOL**

20th century Canadian

- 4**  
**7**  
**8** UNTITLED — SUNRISE AND MIST  
watercolour on paper  
5.5 x 10.25 in. / 14 x 26 cm. Dated: ca. 1890  
signed indistinctly lower right  
ESTIMATE: 200/300

**ADAM SHERRIFF SCOTT**

R.C.A.

[1887-1980] Canadian  
biography and another example in *N.G.C., Vol.III*,  
by R.Hubbard, pg.277; exhibition list in  
*R.C.A.A.*, by E.McMann, pg.367 and *M.M.F.A.*,  
by E.McMann, pg.343

- 4**  
**7**  
**9** UNTITLED — VIKING  
photo-mechanical reproduction on paper  
19.75 x 15.75 in. / 50 x 40 cm.  
signed in plate lower left; signed in margin lower right  
Prov: corporate collection, Calgary  
ESTIMATE: 100/150

**MARGARET SHELTON**

[see biography Lot #283]

- 4**  
**8**  
**0** BANFF SPRINGS GOLF CLUBHOUSE  
linoblock on paper  
4.5 x 5.5 in. / 11 x 14 cm. Dated: 1938  
6.75 x 8.25 in. / 17 x 21 cm. — Paper Size  
signed in block lower left; archival mat front and back  
Ref: *MSBP #5*, ed:200  
Prov: private collection, Calgary  
ESTIMATE: 150/200

- 4**  
**8**  
**1** ROCKPOOL, BANFF GOLF COURSE  
linoblock on paper  
4 x 5.5 in. / 10 x 14 cm. Dated: 1939  
4.5 x 6 in. / 11 x 15 cm. — Paper Size  
signed along bottom; archival mat front and back  
Ref: *MSBP #9*, ed:100  
Prov: private collection, Calgary  
ESTIMATE: 150/200

- 4**  
**8**  
**2** CHURCH AT MONTE CREEK, B.C.  
linoblock on paper  
4.25 x 5 in. / 11 x 13 cm. Dated: 1971  
5 x 5.5 in. / 13 x 14 cm. — Paper Size  
signed, titled and dated along bottom;  
archival mat front and back  
Ref: *MSBP #145* ed:50; also titled 'Monte Creek, B.C.'  
Prov: private collection, Calgary  
ESTIMATE: 150/200

- 4**  
**8**  
**3** FARM AT DEWDNEY, B.C.  
linoblock on paper  
4 x 5 in. / 10 x 13 cm. Dated: 1973  
4.75 x 5.5 in. / 12 x 14 cm. — Paper Size  
signed with initials in block lower right; signed,  
titled and dated along bottom; archival mat front and back  
Ref: *MSBP #149* ed: unknown  
Prov: private collection, Calgary  
ESTIMATE: 150/200

**JOHN HAROLD THOMAS SNOW**

A.S.A., C.S.G.A., R.C.A.

[b.1911] Canadian

see *John Snow: Four Decades*, by M.Joslin,  
E.A.G., 1990; *Founders of the A.C.A.*, by  
V.Greenfield, pg.101 and pg.65; *Printmaking in  
Alberta 1945-1985*, by B.Cochran, pg.137 and  
*A.G.O.*, by the A.G.O., pg.425; included in  
*Jubilee Exhibition of Alberta Paintings*, by  
J.Nicoll, pg.28, Calgary Allied Art Centre, 1955

- 4**  
**8**  
**4** DANCER #31/50  
colour lithograph on paper  
24 x 18 in. / 61 x 46 cm.  
signed, titled and numbered along bottom  
Prov: corporate collection, Calgary  
ESTIMATE: 200/300



**KASHA SZCZERBA**

20th century Canadian

- 4** UNTITLED — ROMANTIC AFTERNOON  
**8** watercolour on paper  
**5** 7.25 x 10.75 in. / 18 x 27 cm.  
 signed lower left; archival mat  
 ESTIMATE: 200/250

**EDWARD HAROLD THOMAS**

[b.1879] Canadian

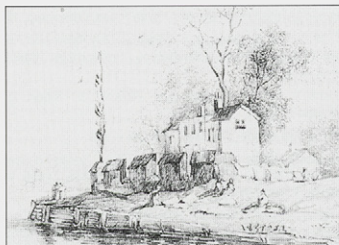
- 4** UNTITLED — ENTERING THE GATE  
**8** oil on panel  
**6** 9.25 x 13.75 in. / 23 x 35 cm.  
 signed lower right; signed painting "Summer Sky" verso  
 ESTIMATE: 300/400

**JOHN TOD**

[1794-1882] Canadian

biography in *E.P.E.C.*, by R.Harper, pg.310

- 4** THE BRITISH FORT, ONTARIO, 1837  
**8** pencil on paper  
**7** 5.5 x 7 in. / 14 x 18 cm. Dated: 1837  
 signed with initials and dated lower right;  
 titled and dated verso; archival mat front and back  
 Prov: The Studio, Victoria. label verso  
 ESTIMATE: 200/300

**BERTRAM WARDLE**

20th century Canadian

- 4** MR. STIGGINS — PICKWICK PAPER — CHARLES DICKENS  
**8** oil on masonite  
**8** 7.5 x 6 in. / 19 x 15 cm.  
 signed lower right  
 Prov: private estate, Calgary  
 ESTIMATE: 200/300

**GEORGE WEBER**

A.S.A., C.P.E., F.C.A.

[b.1907] Canadian

see *Printmaking in Alberta 1945-1985*, by B.Cochran, pg.146 for biography, other examples and Weber's contribution to Alberta printmaking; biography and work included in *The Society of Canadian Painter-Etchers and Engravers in Retrospect*, by A.Oko, Art Gallery of Hamilton, 1981

- 4** MT. ROBSON, B.C. #56/105  
**8** silkscreen on paper  
**9** 14 x 12 in. / 36 x 30 cm. Dated: 1973  
 signed, titled, dated and numbered along bottom;  
 archival mat  
 Prov: private collection, Edmonton  
 ESTIMATE: 150/250

**NORMAN WILKINSON**

[b.1948] Canadian

- 4** UNTITLED — SALMON FISHING  
**9** etching on paper  
**0** 8.75 x 11.75 in. / 22 x 30 cm.  
 11.75 x 16.5 in. / 30 x 42 cm. — Paper Size  
 signed and titled along bottom; unframed  
 ESTIMATE: 250/350

**JACK WINN**

20th century Canadian

- 4** SELF PORTRAIT IN QUEBEC  
**9** oil on masonite  
**1** 5 x 7 in. / 13 x 18 cm. Dated: 1995  
 inscribed "ART" lower right; signed, titled and dated verso  
 ESTIMATE: 300/400

**B.W. WOODS**

20th century Canadian

- 4** UNTITLED — LOGGING TEAM IN THE SNOW  
**9** oil on canvas  
**2** 23.75 x 36 in. / 60 x 91 cm.  
 signed lower left  
 ESTIMATE: 250/350

**Thank you for attending.**

Clients are reminded that the Next Auction is scheduled for NOVEMBER 3 & 4, 1997. Please contact the office early regarding consignments or if there are particular artists you are looking for.

## BIBLIOGRAPHY

- Agnes Etherington Art Centre – Permanent Collection*, by Frances Smith, published by the Agnes Etherington Art Centre, Queen's University, Kingston, 1968
- Art and Architecture in Canada: A Bibliography*, by Loren Lerner and Mary Williamson, published by the University of Toronto Press, Toronto, 1991
- The A.S.A. Index 1948-1980*, by Jan Roseneder, published by the University of Calgary Libraries, Calgary, 1982
- A Measure of Success – Graduates of the Alberta College of Art 1963-1984*, by Valerie Greenfield, published by the Alberta College of Art, Calgary, 1985
- Aquarelle – A History of the Canadian Society of Painters in Water Colour 1925-1985*, by Rebecca Sisler, published by the Canadian Society of Painters in Water Colour, Toronto, 1986
- Art Gallery of Hamilton Handbook*, by T.R. MacDonald, published by the Art Gallery of Hamilton, Hamilton, 1964
- Art Gallery of Ontario – the Canadian Collection*, published by the Art Gallery of Ontario, Toronto, 1967
- ARTBANK: A Database of the Visual Arts in Canada*, compiled by Doug Levis, published by Artbank Incorporated, Calgary, 1993
- Artists, Builders and Dreamers – 50 Years at the Banff School*, by David and Peggy Leighton, published by McClelland and Stewart, Toronto, 1982
- Art Price Annual – ADEC 90, ADEC 91, ADEC 92, ADEC 93*, by Eric Michel, published by ADEC Production, Paris, 1990, 1991, 1992
- Artists in Canada – a Union List of Artists' Files*, by Susan Hasbary, published by the National Gallery of Canada Library, Ottawa, 1988
- Benezit – Dictionnaire des Peintres, Sculpteurs et Graveurs*, by E. Benezit, Vol. 1 thru 11, pub. Librairie Gründ, France, 1966
- Biographical Dictionary of Saskatchewan Artists – Women Artists*, by Marketa Newman, published by Fifth House Publishers, Saskatoon, 1990
- British Columbia Women Artists, 1886-1985*, by Nicholas Tuele, published by the Art Gallery of Greater Victoria, Victoria, 1985
- British Etchers 1850-1940*, by Kenneth M. Guichard, published by Robin Garton, London, 1981
- British Prints, Dictionary and Price Guide* by Ian Mackenzie, published by the Antique Collectors' Club, London, 1987
- Canadian Art Sales Index – Vol. 1 thru 14*, by Anthony Westbridge, published by Westbridge Publications Ltd., Vancouver, 1977 thru 1993
- Catalogue of the National Gallery of Canada, Ottawa – Canadian Art – Volume One / A-F*, by Charles Hill and Pierre Landry, published by the National Gallery of Canada, Ottawa, 1988
- Colgate – Canadian Art: Its Origin and Development*, by William Colgate, McGraw-Hill Ryerson, Toronto, 1943, 1967
- A Concise History of Canadian Painting*, by Dennis Reid, published by Oxford University Press, Toronto, 1973
- Contemporary Canadian Art*, by David Burnett and Marilyn Shiff, published by Hurtig Publishers, Edmonton, 1983
- W.H. Coverdale Collection of Canadiana: Paintings, Watercolours and Drawings*, by Martha Cooke, published by Public Archives Canada, Ottawa, 1983
- Dictionary of British Art, Volume V, British Artists, 1880-1990*, by Jane Johnson and A. Greutner, published by the Antique Collectors' Club, Ltd., London, 1990
- A Dictionary of Canadian Artists – Vol. 1 thru 7*, by Colin MacDonald, published by Canadian Paperbacks Publishing Ltd., Ottawa, 1967 thru 1990
- E.P.E.C. – Early Painters and Engravers in Canada*, by J. Russell Harper, published by the University of Toronto Press, Toronto, 1970
- The Flat Side of Landscape – the Emma Lake Artists' Workshops*, by John O'Brian, Ann Morrison, David Howard, Matthew Teitelbaum and Terry Atkinson, published by the Mendel Art Gallery, Saskatoon, 1989
- Founders of the Alberta College of Art*, by Valerie Greenfield, published by the Alberta College of Art, Calgary, 1986
- Gordon's Print Price Annual, 1990*, by Albert Wehner, published by Martin Gordon Inc., Naples, Florida, 1990
- Guide Vallee, III Edition*, by F. Vallee, pub. Le Guide Vallee, Quebec, 1992
- History of the Royal Academy 1768 – 1886*, by Sidney Hutchison, published by Robert Royce Limited, London, 1986
- History of Wood Engraving*, by Albert Garrett, published by Bloomsbury Books, London, 1978
- Inuit – see
- *Biographies of Inuit Artists*, published by Canadian Arctic Producers – a Division of Arctic Co-operatives Limited, Ottawa, 1984.
- *Inuit Artist Index Arranged by Last Name*, published by Indian and Northern Affairs Canada, Ottawa, January 1990
- Images of the Land: Canadian Block Prints 1919-1945*, by Patricia Ainslie, published by the Glenbow Museum, Calgary, 1984
- Landmarks of Canadian Art*, by Peter Mellen, published by McClelland and Stewart, Toronto, 1978
- The Mendel Art Gallery – Twenty-Five Years of Collecting*, by Matthew Teitelbaum, published by the Mendel Art Gallery, Saskatoon, 1989
- M.M.F.A. – Montreal Museum of Fine Arts – Spring Exhibitions 1880 – 1970*, by E. McMann, published by the University of Toronto Press, Toronto, 1988
- The Mountains and the Sky*, by Lorne Render, published by the Glenbow-Alberta Institute, Calgary, 1974
- The National Gallery of Canada Catalogue of Paintings and Sculpture – Volume II: Modern European Schools*, by R.H. Hubbard, published by the University of Toronto Press, Toronto, 1959
- The National Gallery of Canada Catalogue of Paintings and Sculpture – Volume III: Canadian School*, by R.H. Hubbard, published by the University of Toronto Press, Toronto, 1960
- Painting in Alberta – An Historical Survey*, by Karen Wilkin, published by the Edmonton Art Gallery, Edmonton, 1980
- Painting in Canada: a History*, by J. Russell Harper, published by the University of Toronto Press, Toronto, 1966
- Printmaking in Alberta 1945-1985*, by Bente Roed Cochran, published by the University of Alberta Press, Edmonton, 1989
- 1991/92 Printworld Directory – Contemporary Prints and Prices*, fifth edition, by Selma Smith, published by Printworld Inc., Bala Cynwyd, Pennsylvania, 1991
- Robinson – Canadian Landscape Painters*, by Albert Robinson, The Studio Limited, London, 1932
- Royal Canada Academy of Arts – R.C.A. – see
- *Passionate Spirits – A History of the Royal Canadian Academy of Arts, 1880-1980*, by Rebecca Sisler, published by Clarke, Irwin and Company, Toronto, 1980
- R.C.A.A. – Royal Canadian Academy of Arts, Exhibitions and Members 1880-1979*, by Evelyn de R. McMann, published by the University of Toronto Press, Toronto, 1981
- Selected View – The Longstaffe Collection 1959-1984*, by Lorna Farrell-Ward, published by the Vancouver Art Gallery, 1984
- Society of Canadian Painter-Etchers and Engravers in Retrospect*, by Andrew Oko, published by the Art Gallery of Hamilton, Hamilton, 1981
- Spaces and Places – Eight Decades of Landscape Painting in Alberta*, by Jetske Ironda, published by the Alberta Art Foundation, Edmonton, 1986
- University of Saskatchewan, Permanent Art Collection, 1980*, by Lynne Bell, published by the University of Saskatchewan, Saskatoon, 1980
- Vancouver – Art and Artists 1931-1983*, published by the Vancouver Art Gallery, Vancouver, 1983
- Visions – Contemporary Art in Canada*, by Robert Bringhurst, Geoffrey James, Russell Keziere and Doris Shadbol, published by Douglas and McIntyre, Vancouver, 1983
- Western Untitled*, by Terrence Heath, published by the Glenbow-Alberta Institute, Calgary, 1976
- Winnipeg Art Gallery 1912-1962*, published by the Winnipeg Art Gallery, Winnipeg, 1962
- Winnipeg West – Painting in Western Canada 1945-1970*, by Christopher Varley, published by the Edmonton Art Gallery, Edmonton, 1983



# ABSENTEE BID FORM

I wish to place the following confidential bid(s) with LEVIS Fine Art Auctions & Appraisals for their sale. I agree that LEVIS Fine Art Auctions & Appraisals will, to the best of their ability, attempt to purchase for me the following lots up to the maximum amount specified below, or where indicated plus one incremental bid.

**NOTE TO ABSENTEE BIDDERS:** All bids are accepted subject to the 'Standard Conditions of Sale' printed in the catalogue. The Amount listed is for hammer price — the Buyer's Premium of 10% and G.S.T. of 7% are in addition to the amounts listed below

LEVIS Fine Art Auctions & Appraisals  
A Division of Artbank Incorporated  
#128, 1711 – 10 Avenue S.W.  
Calgary, Alberta T3C 0K1

Tel: (403) 541-9099

**Fax: (403) 541-9097**

Fax available until 12 noon DAY OF SALE  
IN PERSON UNTIL 2 p.m. DAY OF SALE

**SILENT AUCTION:**

**SUNDAY, MAY 4<sup>TH</sup>, 1997**

**SALE DATES:**

**MONDAY, MAY 5<sup>TH</sup>, 1997**

**TUESDAY, MAY 6<sup>TH</sup>, 1997**

LOT NUMBER	ARTIST/ITEM	TOP HAMMER PRICE	PLUS ONE BID
------------	-------------	------------------	--------------

Payment may be made by cash, certified cheque, MasterCard, Visa or bank draft. Payment must be made in full the day of the auction.

Bank Reference:

MasterCard

ACCOUNT NO.

EXPIRY DATE

Visa

ACCOUNT NO.

EXPIRY DATE

I have read your Conditions of Sale printed in the catalogue and I am bidding in accordance with them.

DATE

NAME

ADDRESS

CITY

POSTAL CODE

RES

BUS

FAX

SIGNATURE



**269**  
oil on canvas board  
CARL CLEMENS MORITZ RUNGIUS

BUGLING ELK  
9 x 12 in.  
\$8,000/10,000



**211** BEECHES BY THE LAKE  
watercolour on paper  
THOMAS MOWER MARTIN  
10.5 x 14.5 in., 1918  
\$1,200/1,500



**212** UNTITLED - FOOTHILL STREAM  
watercolour on paper  
THOMAS MOWER MARTIN  
9 x 13 in., 1925  
\$800/1,200



**214** SPRING LANDSCAPE  
oil on canvas  
HENRI LEOPOLD MASSON  
16 x 20 in., ca. 1950  
\$2,500/3,500



**215** GATINEAU LANDSCAPE  
oil on masonite  
HENRI LEOPOLD MASSON  
10 x 12 in. Dated: ca. 1968  
\$2,000/2,500



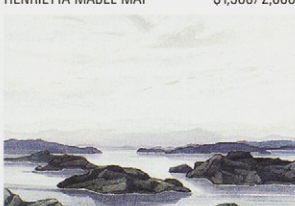
**217** THE ARTIST AND HER MODELS  
oil on paper board  
HENRIETTA MABEL MAY  
10 x 14.5 in.  
\$1,500/2,000



**223** FOREIGNERS  
watercolour on paper  
JANET MITCHELL  
20 x 28.75 in., 1980  
\$1,500/2,000



**226** KENSINGTON MARKET, TORONTO  
oil on canvas  
GLADYS ELEANOR MONTGOMERY  
17 x 21 in.  
\$1,400/1,800



**227** LOW SWING OVER MORESBY ISLAND  
watercolour on paper  
JUNE MONTGOMERY  
16.75 x 22.5 in., 1984  
\$400/600



**234** HILLS AND TREES  
oil on board  
JAMES (JIM) MCLAREN NICOLL  
12 x 14.25 in.  
\$900/1,200



**235** BLACK BIRCH  
watercolour on paper  
MARION FLORENCE NICOLL  
11.25 x 14.25 in.  
\$700/900



**238** HARRISON LAKE, B.C., 1978  
watercolour on paper  
TONI ONLEY  
11.5 x 15 in.  
\$700/900



**242** UNTITLED - MY NORTHERN TRIP  
oil on canvas 22 x 33 in.  
GEORGE DOUGLAS PEPPER \$2,000/8,000



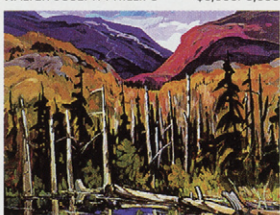
**243** THE ATHABASCA GLACIER  
oil on panel 12.5 x 14.75 in., ca. 1943  
GEORGE DOUGLAS PEPPER \$2,000/2,500



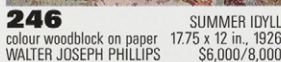
**247** MAMALILICOOLA, BRITISH COLUMBIA  
colour woodblock on paper 12.25 x 14 in., 1928  
WALTER JOSEPH PHILLIPS \$6,000/8,000



**257** A GARDEN - EARLY MORNING  
oil on canvas 23.5 x 28.5 in., 1978  
JOSEPH PLASKETT \$1,500/2,000



**258** LES EAUX MORTES  
acrylic on canvas 20 x 24 in.  
JACQUES POIRIER \$900/1,200



**246** SUMMER IDYLL  
colour woodblock on paper 17.75 x 12 in., 1926  
WALTER JOSEPH PHILLIPS \$6,000/8,000



**268** UNTITLED - KAMLOOPS  
oil on canvas 14 x 21 in., ca. 1890  
A. LEE ROGERS \$2,500/3,000



**288** OCCASION SPECIALE  
oil on canvas 31.75 x 40 in.  
MICHELINE ST. HILAIRE \$600/800



**262** ON THE LAKE  
oil on canvas 16 x 19.75 in.  
GASTON REBRY \$800/1,000



**277** NEAR HAWK LAKE, HALIBURTON  
watercolour on paper 11 x 15 in., 1964  
CARL FELLMAN SCHAEFER \$3,000/4,000



**281** UNTITLED - VIEW OF CALGARY  
watercolour on paper 9.25 x 13 in., ca. 1920  
CANADIAN SCHOOL \$900/1,200



**272** UNDER THE MISTLETOE  
oil on board 12 x 9.25 in., 1910  
JOHN HENRY SANDHAM \$2,500/3,500



**260** ESPECIALLY FOR YOU  
mixed media on paper 9.5 x 7.5 in.  
JANE ASH POITRAS \$500/700



**240** ABSTRACTION - PORTRAIT  
oil on canvas 28 x 24 in.  
MARJORIE PARK \$1,500/2,500



**312** SAINT APOLLONIA  
silk screen on paper  
ANDY WARHOL  
30 x 22 in., 1984  
\$1,500/2,000



**316** ERNEST NEUMAN IN HIS STUDIO  
oil on paper board  
FANNY WISELBERG  
24 x 19.75 in.  
\$3,000/4,000



**320** DELPHINIUM AND DAISIES  
colour woodblock on paper  
MARY EVELYN WRINCH  
9.25 x 6.75 in.  
\$600/800



**323** PETUNIAS  
oil pastel on paper  
LUCIENNE ZEGRAY  
10 x 8 in.  
\$450/550



**283** GAWDUNS SHACK  
oil on plywood  
MARGARET SHELTON  
12 x 16.75 in., ca. 1937  
\$750/1,000



**287** UNTITLED - LES JEUX DANS LA TEMPETE  
acrylic on canvas  
CLAUDE A. SIMARD  
35.75 x 47.75 in., 1981  
\$2,000/2,500



**293** DOWNTOWN DETROIT FROM WINDSOR  
oil on panel  
FREDERICK BOURCHIER TAYLOR  
9 x 11.75 in., 1953  
\$600/800



**302** GOD SERIES #13  
mixed media on paper  
HAROLD BARLING TOWN  
19.25 x 24.5 in., 1979  
\$1,500/2,000



**308** STILL LIFE  
oil on paper  
ELLA MAY WALKER  
15.5 x 19.25 in., ca. 1957  
\$400/600



**314** SILVER MOUNTAIN, SLOCAN LAKE  
oil on paper board  
WILLIAM PERCIVAL WESTON  
12 x 15 in., 1945  
\$3,000/5,000



**305** UNTITLED - VIEW FROM SUNFIELD  
oil on canvas  
JOHN DAVENALL TURNER  
24 x 30 in.  
\$1,200/1,500



**282** BEAR CAGE, STANLEY PARK  
watercolour on paper  
JACK LEONARD SHADBOLT  
22.5 x 30.75 in., 1947  
\$6,000/8,000



**144** THE LOVERS  
bronze sculpture  
SOREL ETROG  
75 x 3 x 5 in.  
\$1,500/2,000



**146** BEAR  
carving in stone  
JOANIE IKKIDLUAK  
22.75 x 14.5 x 15 in.  
\$3,000/3,500



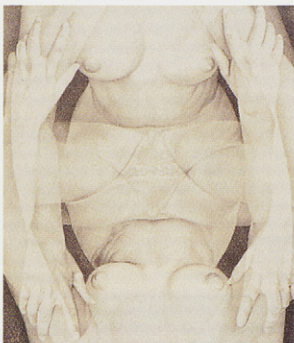
**148** MAN DRUM DANCING  
carving in stone  
MAX KAMIMALIK  
15.5 x 7.5 x 8 in.  
\$2,000/2,500



**152** RECLINING NUDE  
bronze sculpture  
GORD SMITH  
17.25 x 11 x 1.25 in.  
\$700/900



**105** UNTITLED-OLD WOMAN IN THE DUNES  
ink and watercolour on paper  
JOSEF ISRAELS  
11.25 x 8.75 in.  
\$2,000/3,000



**139** MUTATION  
graphite on paper  
ERNEST LINDNER  
28.5 x 22.5 in. Dated: 1971  
\$2,000/2,500



**140** HIGH TIDE, CAPE BRETON COAST  
oil on panel  
ARTHUR LISMER  
12 x 16 in., ca. 1952  
\$5,000/7,000



**142** BEFORE SUN DOWN  
oil on panel  
FREDERICK LOVEROFF  
8.25 x 10.25 in., 1926  
\$2,000/3,000



**137** UNTITLED - TWO HORSES HAULING LOGS  
oil on paper board  
MAUDE LEWIS  
12 x 14 in. Dated: 1966  
\$400/600



**131** UNTITLED - SUMMER SUNSET  
oil on paper board  
ANDREAS LAPINE  
13.75 x 10.5 in.  
\$900/1,200



**267** FORTY MILE CREEK NEAR BANFF  
watercolour on paper  
CLEVELAND ROCKWELL  
13.5 x 19.5 in., 1905  
\$9,000/12,000





**ARE YOU ON OUR MAILING LIST?**

**PLEASE ADD MY NAME  
TO THE MAILING LIST**

*(Please use block letters)*

NAME \_\_\_\_\_

ADDRESS \_\_\_\_\_

CITY \_\_\_\_\_

PROVINCE \_\_\_\_\_ POSTAL CODE \_\_\_\_\_

HOME TEL \_\_\_\_\_

BUS TEL \_\_\_\_\_

FAX \_\_\_\_\_

**PLEASE SEND ME  
INFORMATION ON:**

- Catalogue Subscriptions
- Consignments
- Appraisals

**MAIL OR FAX TO:**

**LEVIS FINE ART AUCTIONS  
& APPRAISALS**

#128, 1711 – 10 Avenue S.W.  
Calgary, AB Canada T3C 0K1

**Tel: (403) 541-9099**

**Fax: (403) 541-9097**

**LEVIS**  
FINE ART AUCTIONS & APPRAISALS  
A DIVISION OF ARTBANK INC.

**SUNDAY, MAY 4TH, 1997**  
**Lots #401 - 492 Silent Auction**  
**MONDAY, MAY 5TH, 1997**  
**Lots #1 - 152 Live Auction**  
**TUESDAY, MAY 6TH, 1997**  
**Lots #201 - 323 Live Auction**

- 145 **A**kilak; Thomas  
 1-2 Aldegrever; Heinrich  
 3 Ananny; Terry  
 4-9 Andrews; Sybil  
 10 Armington; Caroline  
 11-12 Armstrong; William  
 13 Armstrong; William Walton  
 401 Atkins; Caven  
 14 Atkinson; William Edwin
- 15-18, 402-406 **B**ates; Maxwell Bennett  
 19-20 Bell-Smith; Frederic Marlett  
 407 Bennett; Terry A.  
 21-23 Bergman; Henry Eric  
 24 Bieler; Andre  
 25-29 Blackwood; David Lloyd  
 30 Blanchard; Antoine  
 31, 408 Bobak; Bruno  
 32, 408 Bobak; Molly Lamb  
 33 Bough; Paul  
 34 Brandtner; Fritz  
 409-412 Bres; Hendrik  
 35-36 Brewster; Louise Scott  
 204 Britain; Miller  
 37 Brooks; Frank Leonard  
 38 Browne; Belmore  
 413 Brunoni; Serge  
 39 Bush; John [Jack] Hamilton  
 414 Butler; Robert
- 40 **C**aron; Paul Archibald  
 41-42, 415 Casson; Alfred Joseph  
 43 Castonguay; Gerard  
 44 Challenger; Frederick Sproston  
 45-51 Champagne; Horace  
 52-53 Charlesworth; Rod  
 54 Cleland; Alberta Mary  
 416-417 Cloutier; Albert Edward  
 55-56 Cobiness; Eddy  
 57 Cockburn; Douglas L.  
 58 Crockford; Duncan MacKinnon
- 143 **D**allaire; Jean-Guy  
 418 Deer; Norman W.  
 59-60 Desrosiers; Jean-Guy  
 61 Dichmont; James  
 62-63 Durer; Albrecht  
 201 Duval; Paul
- 64 **E**astlake; Charles H.  
 419 Eby; Kerr  
 420 Eekman; Nicolas Mathieu  
 421-423 Esler; John Kenneth  
 144 Etrog; Sorel  
 424 Evans; Meredith
- 425 **F**afard; Joseph [Joe]  
 65 Fehr; Randy  
 66 Fisher; Orville Norman  
 67 Fitzgerald; Lionel LeMoine  
 68 Fitzgerald; Lloyd  
 69-70 Flight; Claude  
 71 Forbes; John Colin  
 72 Fortin; Marc-Aurele de Foy  
 73 Fracchetti; Lorenzo  
 74 Franck; Albert Jacques  
 75 Freeman; Richard
- 76 **G**auvreau; Pierre  
 77 Genn; Robert  
 78-79 Gibbs; Leonard [Len]  
 80-82 Gissing; Roland  
 83-85 Glyde; Henry George  
 86 Godwin; Ted  
 87 Goodwin; Betty Roodish  
 426-427 Gordon; Hortense  
 428-431 Gordon; John Sloan  
 88 Graham; Colin D.  
 89 Grandmaitson; Orestes [Rick] de  
 432 Greene; Thomas Garland

- 90 **H**ahn; Sylvia  
 91-92 Haines; Frederick Stanley  
 433-434 Hardcastle; Jack W.  
 93 Hardwick; William Noble  
 95 Harrison; Ted  
 435-436 Hazard; William Garnet  
 437 Heine; Charles  
 96 Hewton; Randolph Stanley  
 97, 438-441 Helgate; Edwin Headley  
 442 Hone; Ramsey McGregor  
 443-444 Hornyansky; Nicholas  
 445 Houston; James Archibald  
 446 Howell; David  
 98-99 Hughes; Edward John  
 100 Humme; Joseph Julius  
 101-104 Hurley; Robert Newton
- 146 **I**kkidluak; Joanie  
 145-150 Inuit; various  
 147 Irqarqsac; Cain  
 105 Israels; Josef
- 106 **J**ackson; Alexander Young  
 107 Jacobi; Otto Reinhold  
 108 Jarvis; Georgia  
 447 Jenkins; John George  
 109 Johnston; Francis [Franz] Hans  
 448 Jopling; Frederic Waistell  
 202 Joyner; J. Brooks
- 110 **K**allmeyer; Minnie  
 148 Kamimalik; Max  
 111-112 Kasyn; John  
 113 Kenderdine; Augustus  
 114 Kerr; Estelle Muriel  
 115-117, 449-451 Kerr; Illingworth Holey  
 118-119 Kilbourn; Rosemary  
 120 Kirouac; Louise Lecor  
 452 Kiyooka; Harry Mitsuo  
 121 Knowles; Dorothy  
 122 Kollwitz; Kathe  
 123 Kupczynski; Zbigniew  
 124 Kupesc; Rajka  
 453 Kupka; [attributed] Frank
- 125 **L**abranche; Gilles  
 203 Laing; G. Blair  
 126 Laing; William [Bill]  
 127-130 Langevin; Claude  
 131 Lapine; Andreas  
 132 Lavengood; Gill W.  
 151 Leadbeater; Roy  
 133 Leier; Grant  
 134-135 Leighton; Alfred Crocker  
 136 Lenard; Robert  
 137 Lewis; Maude  
 138-139, 454-458 Lindner; Ernest  
 459 Lindstrom; Mat  
 140 Lismer; Arthur  
 141 Lismer; [attributed] Arthur  
 142 Loveroff; Frederick Nicholas
- 460 **M**acDonald; M.P.  
 205 MacDonald; Manly Edward  
 206 MacDonald; Murray William  
 461 MacLaughlin; Donald Shaw  
 207-208 Maltman; William  
 209 Markell; Jack Harold  
 210 Martin; John [Jack]  
 211-213 Martin; Thomas Mower  
 214-215 Masson; Henri Leopold  
 216 Matthews; Marmaduke  
 217 May; Henrietta Mabel  
 218 McAvoy; O. Harold  
 219 McCaugherty; Irene E.  
 220 McInnis; Robert F.M.  
 462 McIntosh; Unknown  
 463 Meissner; Leonhard J.  
 149 Michael; Matoo Moonie  
 221 Millar; Alexander Samuel  
 222 Milne; David Brown  
 223-225 Mitchell; Janet  
 204 Mogelon; Alex  
 226 Montgomery; Gladys Eleanor  
 227 Montgomery; June  
 228 Mooney; E. Hartley  
 229 More; David John

- 230 Morris; Edmund Montague  
 231 Murphy; Julia
- 232-233 **M**agy; Gabor L.  
 234 Nicoll; James [Jim] McLaren  
 202, 235 Nicoll; Marion Florence  
 464 Noeh; Anna I.  
 236 Nowakowski; Wojciech
- 237 **O**gilvie; William Abernethy  
 238, 465 Onley; Toni
- 239 **P**almer; Franklin [Frank]  
 240 Park; Marjorie  
 241 Parker; William  
 466 Pemberton-Smith; Freda  
 242-243 Pepper; George Douglas  
 244-245 Peheludoff; William  
 246-256 Phillips; Walter Joseph  
 467 Pilot; Robert Wakeham  
 150 Pitsiulak; Donny  
 257 Plaskett; Joseph  
 258 Poirier; Jacques  
 259-260 Poitras; Jane Ash  
 468 Polley; Winifred  
 469 Pratte; Fernande  
 470 Prouse; Rod
- 261 **R**akine; Marthe  
 262-263 Reby; Gaston  
 265 Rembrandt Harmensz Van Ry  
 266 Rhoades; Geoffrey Feardon  
 471-474 Robinson; Clifford Hamilton  
 267 Rockwell; Cleveland  
 268 Rogers; A. Lee  
 475 Ross; Susan Andrea  
 269-271 Rungius; Carl Clemens Moritz
- 272-274 **S**andham; John Henry  
 275-276 Sapp; Allen  
 277-278 Schaefer; Carl Fellman  
 279 Schneider; Mary  
 280-281, 476-478 School; various  
 479 Scott; Adam Sherriff  
 282 Shadbolt; Jack Leonard  
 283-286, 480-483 Shelton; Margaret  
 287 Simard; Claude A.  
 152 Smith; Gord  
 484 Snow; John Harold Thomas  
 288 St. Hilaire; Micheline  
 289 Staseson; Joan Hall  
 290 Stevens; Dorothy Austin  
 291 Stone; Thomas Albert  
 485 Szczërba; Kasha
- 292 **T**ailfeathers; Gerald T.  
 292A Tanabe  
 293-294 Taylor; Frederick Bouchier  
 295 Thierfelder; Vivian  
 486 Thomas; Edward Harold  
 296 Thomas; Lionel Arthur John  
 297-300 Thornton; Mildred Valley  
 487 Tod; John  
 301-303 Town; Harold Barling  
 304 Townsend; H. William  
 305-306 Turner; John Davenall
- 307 **V**isscher; [Style of] Cornelis
- 308-310 **W**alker; Ella May  
 311 Wallace; Harry Draper  
 488 Wardle; Bertram  
 312 Warhol; Andy  
 313 Way; Charles John  
 489 Weber; George  
 314 Weston; William Percival  
 490 Wilkinson; Norman  
 315 Wilson; Ronald York  
 491 Winn; Jack  
 316 Wiselberg; Fanny  
 317-318 Wiselberg; Rose  
 319 Woodman; Florence  
 492 Woods; B.W.  
 320 Wrinch; Mary Evelyn
- 321 **Y**oung; John Crawford  
 322-323 **Z**egray; Lucienne Boucher